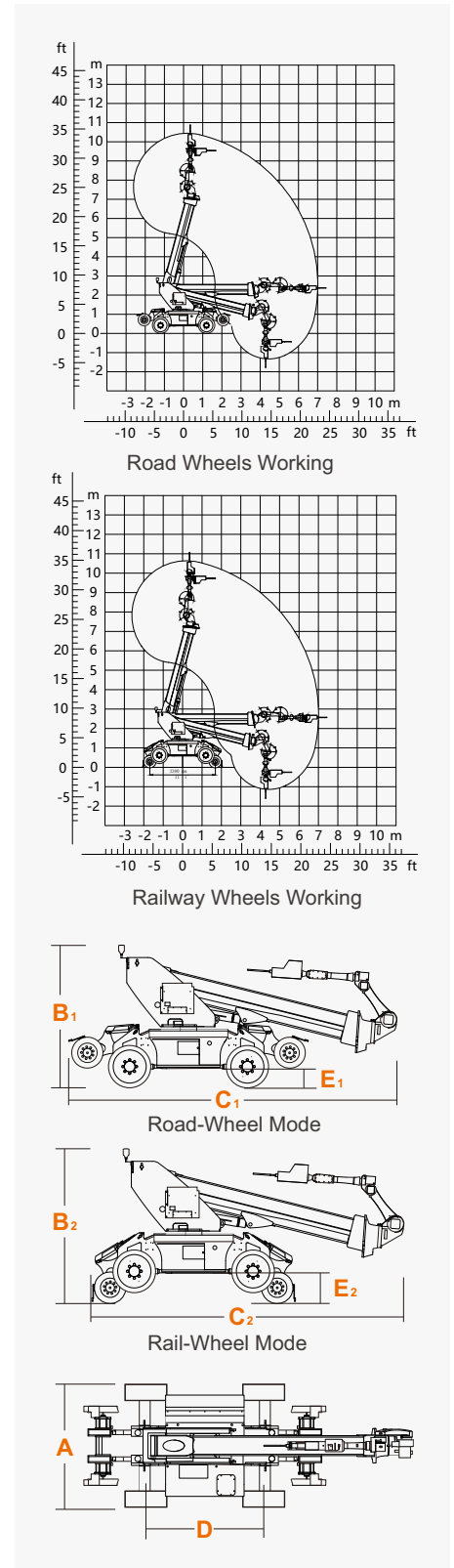


## Machine Specifications

Mode	Road Wheels Working	Railway Wheels Working
<b>Size</b>	<b>Metric   British</b>	<b>Metric   British</b>
Max. Horizontal Drilling Height	9.50m   31'2"	9.70m   31'10"
Max. Vertical Upward Drilling Height	10.40m   34'1"	10.60m   34'9"
Min. Horizontal Drilling Height	-0.40m   -1'4"	-0.20m   -8"
Min. Vertical Downward Drilling Height	-1.30m   -4'3"	-1.10m   3'7"
Overall Width(Stowed) <b>A</b>	2.50m   8'2"	2.50m   8'2"
Overall Height(Stowed) <b>B<sub>1</sub> /B<sub>2</sub></b>	2.65m   8'8"	2.84m   8'8"
Overall Length(Stowed) <b>C<sub>1</sub> /C<sub>2</sub></b>	7.09m   23'3"	6.65m   21'10"
Wheelbase <b>D</b>	2.40m   7'10"	3.38m   11'1"
Tailswing	0.02m   1"	0.02m   1"
Ground Clearance <b>E<sub>1</sub> /E<sub>2</sub></b>	0.29m   11"	0.13m   5"
Tires/Railway Wheels Diameter	315/55D20	0.58m   1'11"
Applicable Rail Gauge	/	1435mm   4'8"
Max. Railway Drop Height	/	160mm   6"
<b>Performance</b>		
Main Boom Maximum Angle	75°	75°
Travel Speed(Stowed)	≥6km/h   3.7mph	≥12km/h   7.5mph
Travel Speed(Raised)	≥1.1km/h   0.7mph	≥2.5km/h   1.6mph
Gradeability	30%	/
Maxi. Chassis Angle	X-5°/Y-5°	X-6°/Y-6°
Turret Rotation	360° Continuous	
Max. Wind Speed	12.5m/s	
Turning Radius(Inside/Outside)	1.65m/2.62m   5'5"/8'7"	40m   131'3"
<b>Weight</b>		
Overall Weight	10950kg   24140lb	
<b>Power</b>		
Battery	76.8V/628Ah	
Charger	90-264VAC/6.6kW	
Motor	80V/30kW	
Inverter(220V)	220VAC/8KW	
Inverter(380V)	380VAC/15KW	
Hydraulic Tank	150L   39gal	



## Robot Parameter

### Robot Body Parameter

Model	SR50-2180
Degrees of Freedom	6
Max. Working Radius	2180.5mm
Repeat Positioning Accuracy	±0.06mm
Wrist Load	50kg
Body Protection	IP54(Wrist IP65)
Operating Temperature	0~45°C
Operating Humidity	Below 75% RH(Short-term 95%RH)
Noise Level	≤80dB(A)

### Robot Joint Angle/Speed

J1	±160°/175°/S
J2	+130° ~ -60°/170°/S
J3	+75° ~ -195°/178°/S
J4	±185°/260°/S
J5	±120°/260°/S
J6	±360°/350°/S

### Allowable Joint Torque

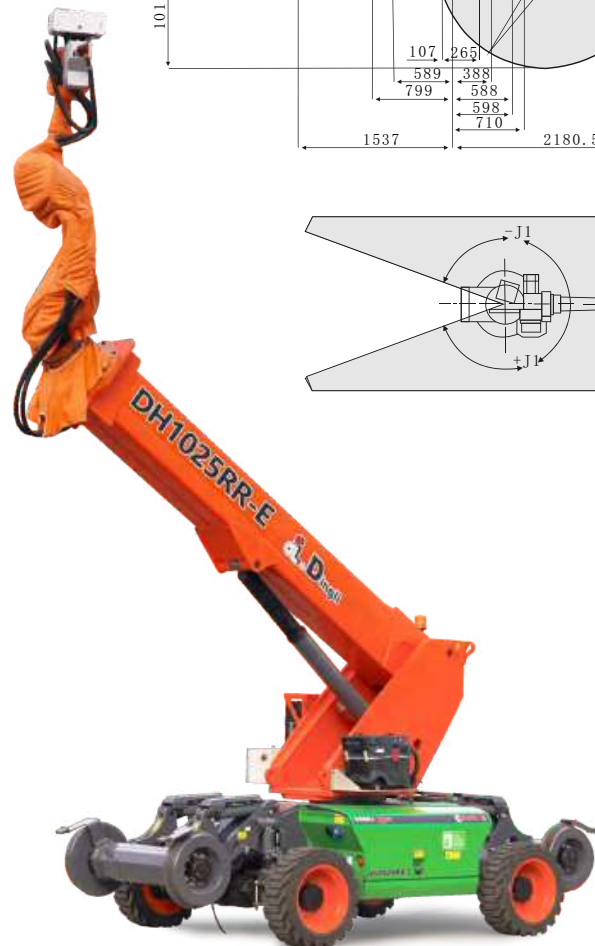
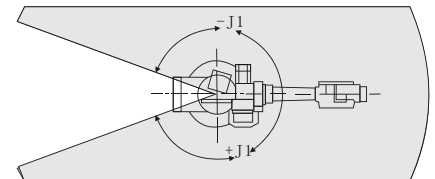
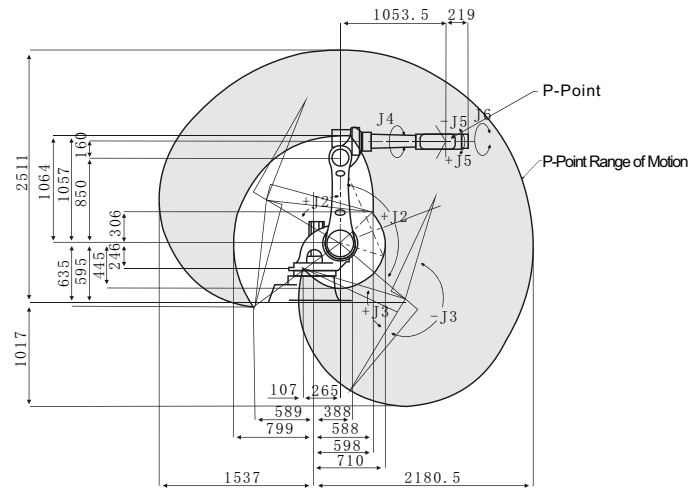
J4	260N·m/28kg·m <sup>2</sup>
J5	260N·m/28kg·m <sup>2</sup>
J6	147N·m/11kg·m <sup>2</sup>

### 3D Camera

Power	24VDC
Optimal Working Distance	1900±700mm
Max. Working Distance	2600mm
Repeat Accuracy	±2@1900mm
Waterproof Rating	IP65

### Robot Body Parameter

Brand & Model	Hilti TE 70-AVR
Type	SDS-Max (5-Slot Round Shank)
Application Range	Concrete, Masonry, Steel
Diameter Range	12-55 mm
Single Hammer Force	11.5 J
Maximum Impact Frequency	2760 bpm
Maximum RPM	360 rpm
Speed Control Method	Stepless Speed Regulation



## ZHEJIANG DINGLI MACHINERY CO., LTD.

Address: No.188 Qihang Road,Deqing,Zhejiang P.R.C 313219

Telephone: +86(572)8681688

E-Mail: export@cndingli.com

Https://www.dingliglobal.com/