

# Modular Boom Series Product Manuals

 Engine  Electric  Hybrid



ZHEJIANG DINGLI MACHINERY CO., LTD.

ADD:188 Qihang Road, Leidian Town, Deqing, Zhejiang, P.R.C  
P.C:313219  
Tel:+86-572-8681688  
E-Mail:export@cndingli.com  
Https://www.cndingli.com

As the technology is constantly updated, technical parameters are subject to change without notice. This manual is for reference only.  
The copyright is owned by Zhejiang Dingli. No content may be copied or plagiarize for any purpose without written permission.  
April 2024 edition

**DINGLI**<sup>®</sup>  
*Exceed · New Height*



Founded in 2005, [Zhejiang Dingli Machinery Co., Ltd.](#) is a leading manufacturer of intelligent aerial work platforms in the world, covering a total area of 710,000 square meters (175.4 acres), with a construction area of 590,000 square meters and an annual output value of more than 10 billion.

Dingli has been applying the core concepts of "Carbon Peak" and "Carbon Neutral", as well as energy saving and emission reduction throughout the whole process of corporate governance, which are mainly reflected in the green travel of employees, green park construction, green production and manufacturing, green product R&D, and green recycling re-manufacturing

Technological innovation is the core tenet of the company, Dingli has R&D centers in Italy, Germany and the USA, an Enterprise Research Institute in China, has been awarded more than 250 patents, of which more than 100 patents of invention, more than 60 foreign patents, 5 computer software copyright registration certificate, Dingli also participated in the formulation of 16 national standards and 9 industry standards, fully realizing technological globalization. Dingli's over 200 types of aerial work platforms by independent R&D that are the most in the industry, have all passed authoritative certifications such as CE in Europe and ANSI in the US, and are exported to over 80 countries and regions worldwide.

In line with the trend of electrification, greening and intelligence, Dingli has realized collaborative, green and safe manufacturing based on the "future factory" with the highest degree of automation in the industry. Electrification is the key for Dingli's energy-saving solutions to customers. Dingli is the first in the industry to electrify the entire range of products, among which the boom series with large load capacity and modular design is the first in the industry. By advocating the efficient use of recycling energy, the company has established re-manufacturing factories to provide customers with full life cycle services for products.

In order to better convey the global green development concept, Dingli has invested in MAGNI (Italy), CMEC (USA) and TEUPEN (Germany) with innovative technology as the grip, green products as the entry point, Dingli set up more than ten overseas subsidiaries, serving global customers with electric aerial work platforms.

Dingli has been recognized as a "National Manufacturing Single Item Champion Demonstration Enterprise" by the Ministry of Industry and Information Technology; been awarded the "IPAF Annual Pioneer of Aerial Work Platforms", making a zero breakthrough in this international award of Chinese manufacturing; been awarded the "IPAF 2024 Product of the Year Categories - Scissor Lifts & Vertical Masts", becoming the first Chinese winner in this industry's most authoritative international awards. Also, Dingli has been awarded "Global Top 3 Manufacturers of Aerial Work Platforms" in Access M20 2021, "Top 40 Global Construction Machinery Manufacturers". Mr. Xu Shugen, president of the board, is the first Chinese selected as a member of the IPAF judging panel, he has been awarded "2020 National High-level Talents Special Support Program Leading Talents", "2022 Zhejiang Merchants of the Year". Mr. Xu has also been honored as one of the "100 Influential People in China's Construction Machinery Industry" for consecutive years, and is one of the outstanding entrepreneurs in the "Golden Quality" of 2020 listed companies on the Shanghai Stock Exchange.

Dingli is also committed to building an equal, diverse and inclusive corporate environment, by actively empowering women to realize gender diversity in all positions in the male-dominated machinery manufacturing industry, respecting different voices to keep team innovative and resilient for a long time, promoting the development of the industry and ushering in a new era of electrification of non-road mobile machinery to lead the green transformation. Meanwhile, Dingli has built a harmonious supply chain, connected upstream and downstream to create the world's only industrial park for aerial work platforms. Dingli has been fulfilling social responsibilities establish the "HongDing Fund", and actively carry out warm-hearted volunteer service activities such as poverty relief, fundraising and disaster relief, etc.

Through the entire life cycle of enterprise ecology, "green sustainability" is becoming the focus of Dingli's high-quality development. In the future, the company will continue to upgrade the "future factories", deepen the green and energy-saving strategy, lead the "new era of electrification of non-road mobile machinery", make aerial work platforms "Made in China" shine internationally.

## Modular Boom Series

With diesel, electric and hybrid models developed on the same platform, 85% of components in the whole series are common. Be divided into "D", "M" and "T" series, offering working height from 16 to 44 meters, all of which are suitable for standard container transport.

### D-Series Modular Boom

Developed independently by Dingli, with a maximum working height of 16 to 22 meters and a maximum load of 250 kg. The whole series adopts a lightweight design and is equipped with integrated axles, with the advantages of easy maintenance, high chassis, high energy efficiency, stable control and easy transportation.

### M-Series Modular Boom

Jointly developed by Dingli and MAGNI of Italy, with a maximum working height of 22 to 34 meters and a maximum load of 454 kg. The whole series features whole components downwards design and integrated axles, which have the advantages of large load capacity, strong power, easy maintenance, high chassis, high energy efficiency, stable control and easy transport.

### T-Series Modular Boom

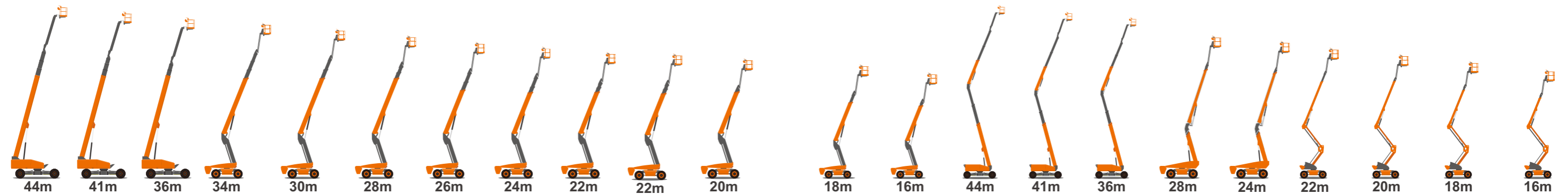
Jointly developed by Dingli and TEUPEN of Germany, with a maximum working height of 36 to 44 meters and a maximum load of 454 kg. The whole series adopts the patented design of in-situ axle expansion, the jib in its series can be hooked back, making it the only one in its class in the world applicable to standard container transport. The movement efficiency of this series is 40% higher than that in its class, and it is the industry's only boom series with fully redundant of electronic control software and hardware.



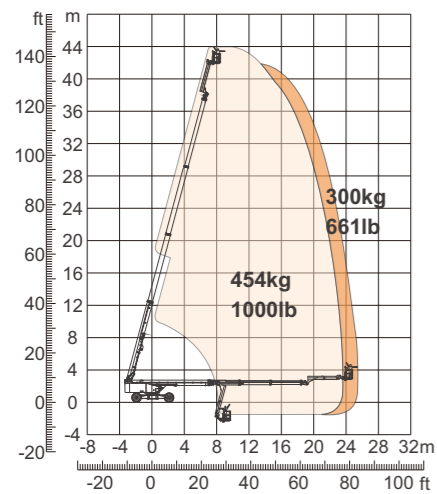
Diesel, electric and hybrid powered developed on the same platform  
Over 85% of components in the whole series are common



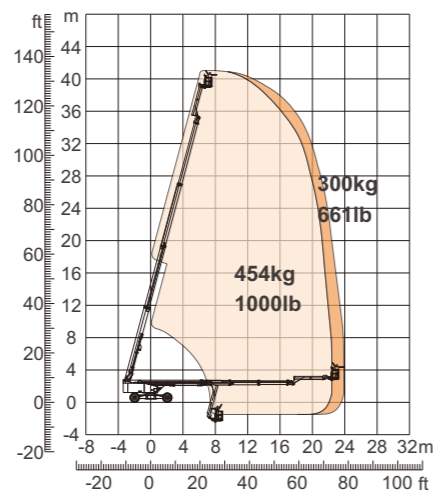
Full range of booms from 16-44m  
The whole machine can be transported in a standard container



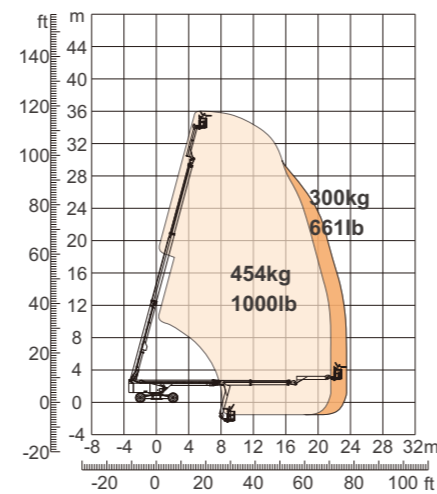
Regular Jib																				
Barb Jib																				
Telescopic Barb Jib																				



BT44(RT/ERT/HRT)

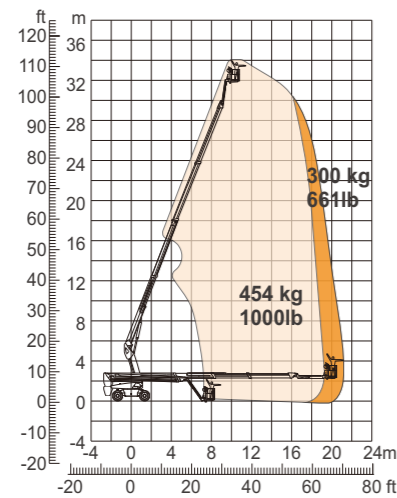


BT41(RT/ERT/HRT)

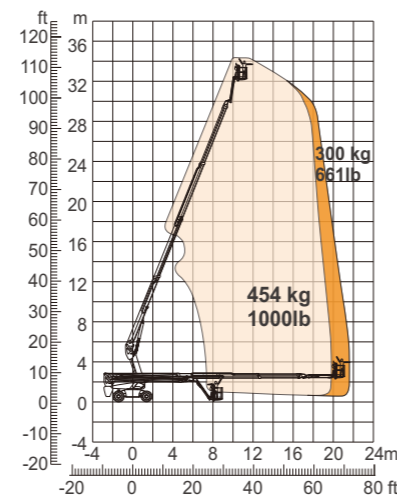


BT36(RT/ERT/HRT)

Model	BT44(RT/ERT/HRT)	BT41(RT/ERT/HRT)	BT36(RT/ERT/HRT)
<b>Dimension</b>			
Max. Working Height	44.44m 146ft	41.54m 136ft 3in	36.23m 118ft 10in
Max. Platform Height	42.44m 139ft 3in	39.54m 129ft 9in	34.23m 112ft 4in
Max. Operating Range(+0.6m)	25.60m 83ft 12in	24.10m 79ft 1in	23.60m 77ft 5in
Max. Platform Range	25.00m 82ft	23.50m 77ft 1in	23.00m 75ft 5in
Flatbed Transport Dimensions (L×W×H)	11.92m×2.44m×2.83m 39ft 1in×8ft×9ft 3in	11.17m×2.44m×2.83m 36ft 8in×8ft×9ft 3in	11.92m×2.44m×2.83m 39ft 1in×8ft×9ft 3in
Standard Container Transport	All Applicable		
Overall Width(Axle Expanded/Axle Retracted)	4.17m / 2.44m 13ft 8in / 8ft		
Platform Size(L×W)	2.44m×0.91m 8ft×3ft		
Turntable Tailswing(Axle Expanded/Axle Retracted)	1.39m / 2.28m 4ft 7in / 7ft 6in		
Ground Clearance	0.40m 1ft 4in		
Wheelbase(Axle Expanded/Axle Retracted)	4.07m / 4.27m 13ft 4in/14ft		
<b>Performance</b>			
S.W.L.(Unrestricted/Restricted)	300kg / 454kg 661lb/1000lb		
Max. Occupants	3		
Gradeability	RT:45%    ERT:30%    HRT:30%		
Travel Speed(Stowed/Raised)	6.0km/h / 1.1km/h 3.73mph / 0.68mph		
Max. Working Slope	5°		
Turret Rotation	360° Continuous		
Platform Rotation	180°		
Jib Movement	230°		
Main Boom Maximum Angle	75°		
Turning Radius(Inside/Outside)Axle Expanded	2.99m / 5.41m 10ft/17ft 9in		
Turning Radius(Inside/Outside)Axle Retracted	8.27m / 10.85m 27ft 2in / 35ft 7in		
Tyres	445/50-D710		
<b>Weight</b>			
Overall Weight	RT:22500kg 49604lb	ERT:22700kg 50044lb	HTT:23000kg 50706lb
	RT:21300kg 46958lb	ERT:21500kg 47399lb	HRT:21800kg 48061lb
	RT:20250kg 44644lb	ERT:20700kg 45636lb	HRT:21000kg 46297lb
<b>Power</b>			
<b>Engine RT</b>	<b>Electric ERT</b>	<b>Hybrid HRT</b>	
Emergency Power System 12V	Lithium Battery 358.4V/228Ah	Lithium Battery 358.4V/173Ah	
Diesel Engine Deutz TD2.9 L4/55.4kW	Charger 358.4V/32A	Charger 358.4V/32A	
Diesel Tank 150L(39gal)	Emergency Power System 12V/110A×2	Emergency Power System 12V	
Hydraulic Tank 230L(61gal)	Pump Motor 360V/30kW	Pump Motor 360V/30kW	
	Hydraulic Tank 230L(61gal)	Range Extended Engine Kubota D1105/18.2kW	
		Diesel Tank 100L(26gal)	
		Hydraulic Tank 230L(61gal)	

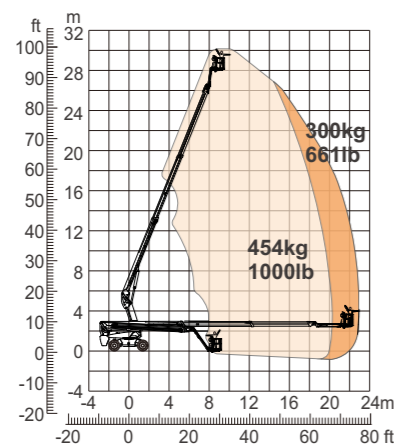


BT34(RT/ERT/HRT)

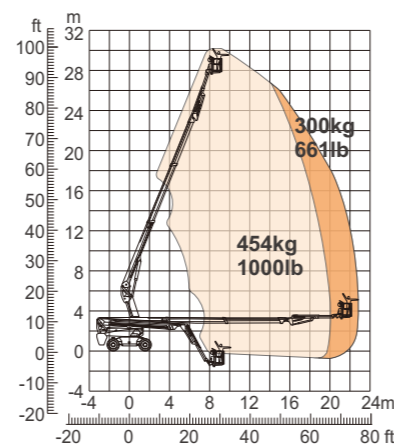


BT34B(RT/ERT/HRT)

Model	BT34(RT/ERT/HRT)	BT34B(RT/ERT/HRT)
<b>Dimension</b>		
Max. Working Height	34.14m 112ft	34.46m 113ft 1in
Max. Platform Height	32.14m 105ft 5in	32.46m 106ft 6in
Max. Operating Range(+0.6m)	21.60m 70ft 10in	21.85m 71ft 8in
Max. Platform Range	21.00m 68ft 11in	21.25m 69ft 9in
Flatbed Transport Dimensions (L×W×H)	11.63m×2.50m×2.86m 38ft 2in×8ft 2in×9ft 4in	9.01m×2.50m×2.91m 29ft 7in×8ft 2in×9ft 6in
Standard Container Transport	All Applicable	
Platform Size(L×W)	2.44m×0.91m 8ft×3ft	
Turntable Tailswing	1.61m 5ft 3in	
Ground Clearance	0.41m 1ft 4in	
Wheelbase	2.80m 9ft 2in	
<b>Performance</b>		
S.W.L.(Unrestricted/Restricted)	300kg / 454kg 661lb/1000lb	
Max. Occupants	3	
Gradeability	RT:45%    ERT:30%    HRT:30%	
Travel Speed(Stowed/Raised)	6.0km/h / 1.1km/h 3.7mph / 0.7mph	
Max. Working Slope	5°	
Turret Rotation	360° Continuous	
Platform Rotation	180°	
Jib Movement	135°	
Main Boom Maximum Angle	68°	
Turning Radius(Inside/Outside)	1.87m / 3.22m 6ft 2in/10ft 7in	
Tyres	385/45-28	
<b>Weight</b>		
Overall Weight	19150kg 42219lb	19290kg 42527lb
<b>Power</b>		
<b>Engine RT</b>	<b>Electric ERT</b>	<b>Hybrid HRT</b>
Emergency Power System 12V	Lithium Battery 80V/520Ah	Lithium Battery 80V/420Ah
Diesel Engine Deutz TD2.9 L4/55.4kW	Charger 80V/80A	Charger 80V/80A
Diesel Tank 135L(35gal)	Emergency Power System 12V	Emergency Power System 12V
Hydraulic Tank 165L(43gal)	Driving Motor 54VAC/18kW	Driving Motor 54VAC/18kW
	Hydraulic Tank 165L(43gal)	Range Extended Engine Kubota Z482/9.8kW
		Diesel Tank 110L(29gal)
		Hydraulic Tank 165L(43gal)



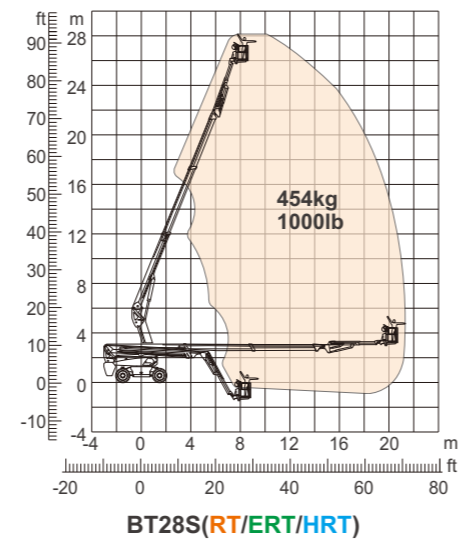
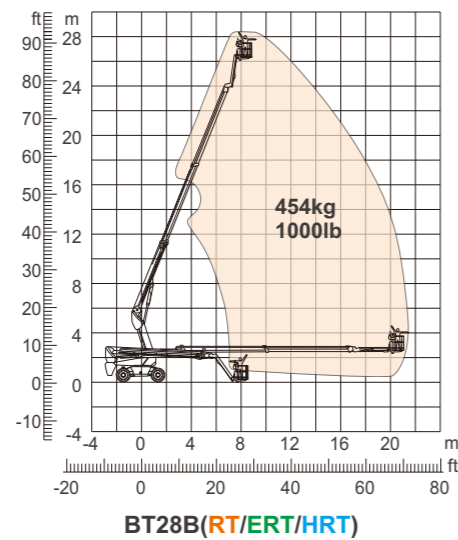
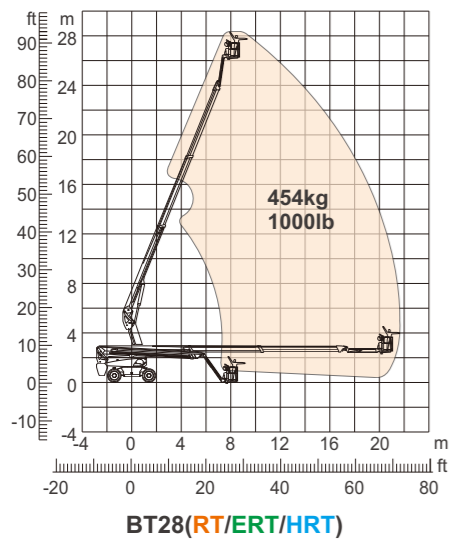
BT30(RT/ERT/HRT)



BT30S(RT/ERT/HRT)

Model	BT30(RT/ERT/HRT)	BT30S(RT/ERT/HRT)
<b>Dimension</b>		
Max. Working Height	30.20m 99ft 5in	30.30m 99ft 5in
Max. Platform Height	28.20m 92ft 6in	28.30m 92ft 10in
Max. Operating Range(+0.6m)	23.00m 75ft 6in	23.00m 75ft 6in
Max. Platform Range	22.40m 73ft 6in	22.40m 73ft 6in
Flatbed Transport Dimensions (L×W×H)	12.08m×2.50m×2.96m 39ft 7in×8ft 2in×9ft 8in	8.82m×2.50m×2.96m 28ft 11in×8ft 2in×9ft 8in
Standard Container Transport	All Applicable	
Platform Size(L×W)	2.44m×0.91m 8ft×3ft	
Turntable Tailswing	1.61m 5ft 3in	
Ground Clearance	0.41m 1ft 4in	
Wheelbase	2.80m 9ft 2in	
<b>Performance</b>		
S.W.L(Unrestricted/Restricted)	300kg / 454kg 661lb/1000lb	
Max. Occupants	3	
Gradeability	RT:45%    ERT:30%    HRT:30%	
Travel Speed(Stowed/Raised)	6.0km/h / 1.1km/h 3.7mph / 0.7mph	
Max. Working Slope	5°	
Turret Rotation	360°Continuous	
Platform Rotation	180°	
Jib Movement	135°	130°
Main Boom Maximum Angle	68°	
Turning Radius(Inside/Outside)	1.87m / 3.22m 6ft 2in/10ft 7in	
Tyres	385/45-28	
<b>Weight</b>		
Overall Weight	18900kg 41667lb	18900kg 41667lb

Engine RT	Electric ERT	Hybrid HRT
Emergency Power System 12V	Lithium Battery 80V/520Ah	Lithium Battery 80V/420Ah
Diesel Engine Deutz TD2.9 L4/55.4kW	Charger 80V/80A	Charger 80V/80A
Diesel Tank 135L(35gal)	Emergency Power System 12V	Emergency Power System 12V
Hydraulic Tank 165L(43gal)	Driving Motor 54VAC/18kW	Driving Motor 54VAC/18kW
	Hydraulic Tank 165L(43gal)	Range Extended Engine Kubota Z482/9.8kW
		Diesel Tank 110L(29gal)
		Hydraulic Tank 165L(43gal)



Model	BT28(RT/ERT/HRT)	BT28B(RT/ERT/HRT)	BT28S(RT/ERT/HRT)
<b>Dimension</b>			
Max. Working Height	28.60m 93ft 10in	28.50m 93ft 6in	28.10m 92ft 2in
Max. Platform Height	26.60m 87ft 3in	26.50m 86ft 11in	26.10m 85ft 8in
Max. Operating Range(+0.6m)	21.90m 71ft 10in	21.80m 71ft 6in	21.40m 70ft 3in
Max. Platform Range	21.30m 69ft 11in	21.20m 69ft 7in	20.80m 68ft 3in
Flatbed Transport Dimensions (L×W×H)	11.50m×2.50m×2.96m 37ft 9in×8ft 2in×9ft 8in	8.75m×2.50m×2.96m 28ft 8in×8ft 2in×9ft 8in	8.32m×2.50m×2.96m 27ft 3in×8ft 2in×9ft 8in
Standard Container Transport	All Applicable		
Platform Size(L×W)	2.44m×0.91m 8ft×3ft		
Turntable Tailswing	1.61m 5ft 3in		
Ground Clearance	0.41m 1ft 4in		
Wheelbase	2.80m 9ft 2in		
<b>Performance</b>			
S.W.L	454kg 1000lb		
Max. Occupants	3		
Gradeability	RT:45%    ERT:30%    HRT:30%		
Travel Speed(Stowed/Raised)	6.0km/h / 1.1km/h 3.7mph / 0.7mph		
Max. Working Slope	5°		
Turret Rotation	360°Continuous		
Platform Rotation	180°		
Jib Movement	135°	135°	130°
Main Boom Maximum Angle	68°		
Turning Radius(Inside/Outside)	1.87m / 3.22m 6ft 2in/10ft 7in		
Tyres	385/45-28		
<b>Weight</b>			
Overall Weight	18400kg 40565lb	18400kg 40565lb	18500kg 40785lb
<b>Power</b>			
<b>Engine RT</b>	<b>Electric ERT</b>	<b>Hybrid HRT</b>	
Emergency Power System 12V	Lithium Battery 80V/520Ah	Lithium Battery 80V/420Ah	
Diesel Engine Deutz TD2.9 L4/55.4kW	Charger 80V/80A	Charger 80V/80A	
Diesel Tank 135L(35gal)	Emergency Power System 12V	Emergency Power System 12V	
Hydraulic Tank 165L(43gal)	Driving Motor 54VAC/18kW	Driving Motor 54VAC/18kW	
	Hydraulic Tank 165L(43gal)	Range Extended Engine Kubota Z482/9.8kW	
		Diesel Tank 110L(29gal)	
		Hydraulic Tank 165L(43gal)	



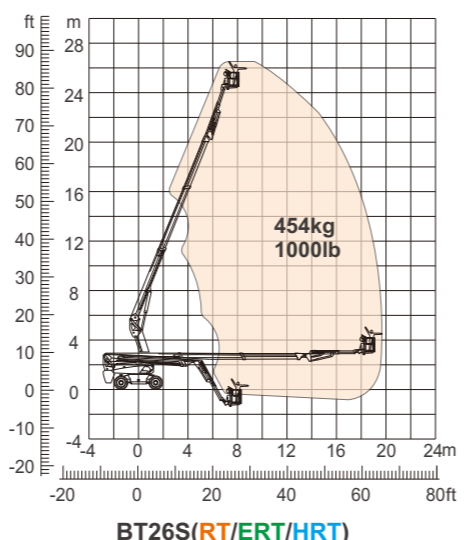
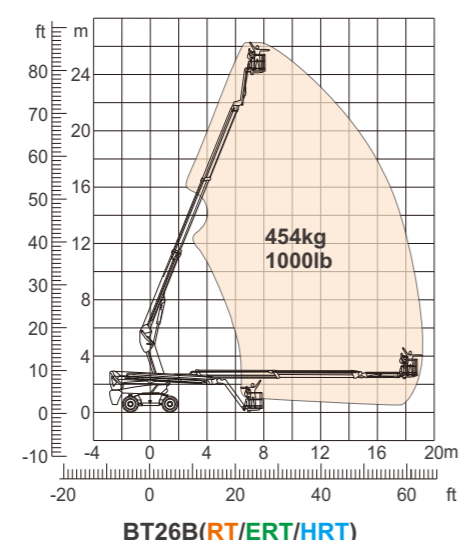
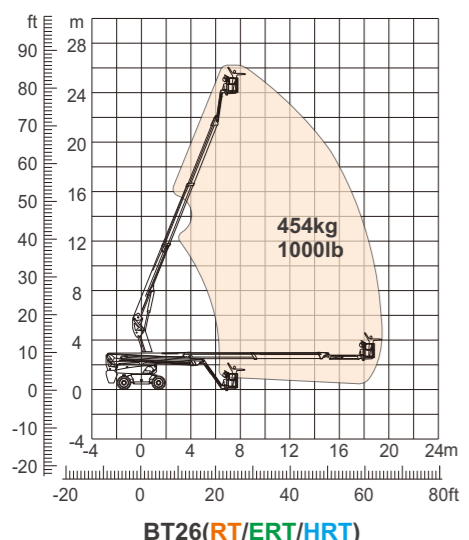
Model	BT26(RT/ERT/HRT)	BT26B(RT/ERT/HRT)	BT26S(RT/ERT/HRT)
-------	------------------	-------------------	-------------------

Dimension			
Max. Working Height	26.30m 86ft 3in	26.30m 86ft 3in	26.70m 87ft 7in
Max. Platform Height	24.30m 79ft 9in	24.30m 79ft 9in	24.70m 81ft
Max. Operating Range(+0.6m)	19.50m 64ft	19.40m 63ft 8in	19.80m 65ft
Max. Platform Range	18.90m 62ft	18.80m 61ft 8in	19.20m 63ft
Flatbed Transport Dimensions (L×W×H)	10.71m×2.50m×2.96m 35ft 2in×8ft 2in×9ft 8in	7.95m×2.50m×2.96m 26ft 1in×8ft 2in×9ft 8in	8.48m×2.50m×2.96m 28ft×8ft 2in×9ft 8in
Standard Container Transport	All Applicable		
Platform Size(L×W)	2.44m×0.91m 8ft×3ft		
Turntable Tailswing	1.61m 5ft 3in		
Ground Clearance	0.41m 1ft 4in		
Wheelbase	2.80m 9ft 2in		

Performance			
S.W.L	454kg 1000lb		
Max. Occupants	3		
Gradeability	RT:45%	ERT:30%	HRT:30%
Travel Speed(Stowed/Raised)	6.0km/h / 1.1km/h 3.7mph / 0.7mph		
Max. Working Slope	5°		
Turret Rotation	360°Continuous		
Platform Rotation	180°		
Jib Movement	135°	135°	130°
Main Boom Maximum Angle	68°		
Turning Radius(Inside/Outside)	1.87m / 3.22m 6ft 2in/10ft 7in		
Tyres	385/45-28		

Weight			
Overall Weight	16090kg 35472lb	16090kg 35472lb	16800kg 37037lb

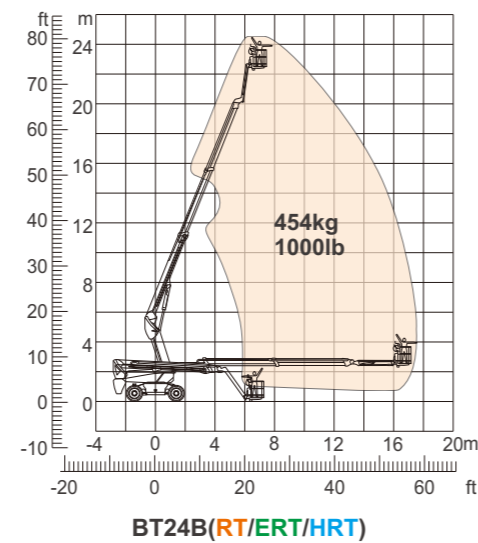
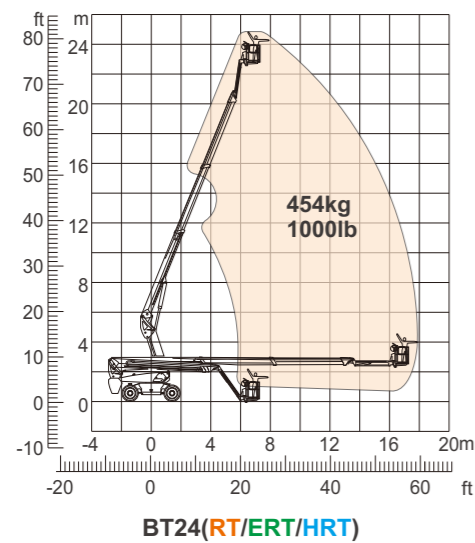
Power		
<b>Engine RT</b> Emergency Power System 12V Diesel Engine Deutz TD2.9 L4/55.4kW Diesel Tank 135L(35gal) Hydraulic Tank 165L(43gal)	<b>Electric ERT</b> Lithium Battery 80V/420Ah Charger 80V/80A Emergency Power System 12V Driving Motor 54VAC/18kW Hydraulic Tank 165L(43gal)	<b>Hybrid HRT</b> Lithium Battery 80V/420Ah Charger 80V/80A Emergency Power System 12V Driving Motor 54VAC/18kW Range Extended Engine Kubota Z482/9.8kW Diesel Tank 110L(29gal) Hydraulic Tank 165L(43gal)

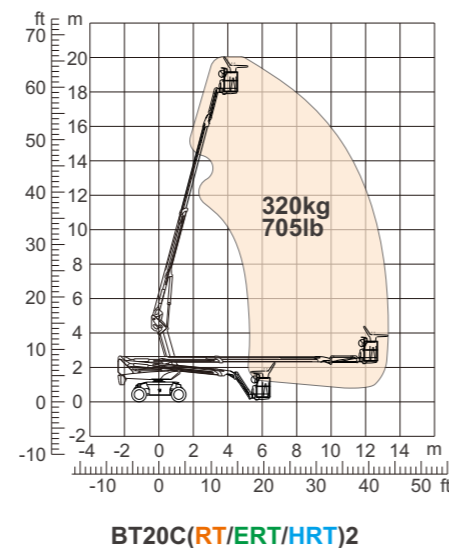
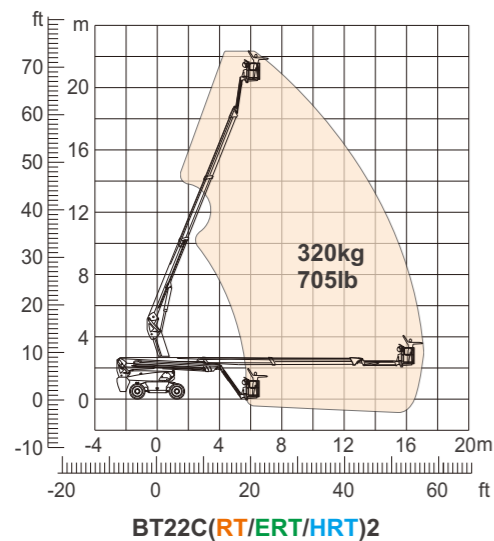




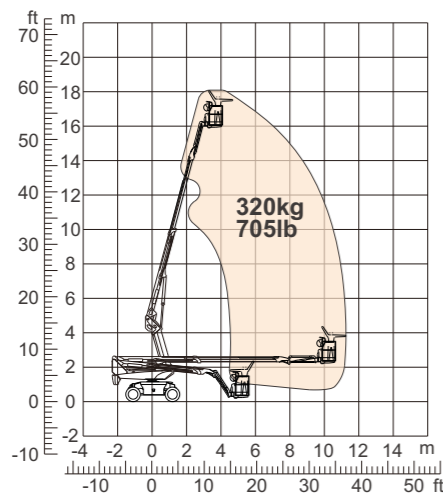


Model	BT24(RT/ERT/HRT)	BT24B(RT/ERT/HRT)
<b>Dimension</b>		
Max. Working Height	24.80m 81ft 4in	24.80m 81ft 4in
Max. Platform Height	22.80m 74ft 10in	22.80m 74ft 10in
Max. Operating Range(+0.6m)	17.90m 58ft 9in	17.80m 58ft 5in
Max. Platform Range	17.30m 56ft 9in	17.20m 56ft 5in
Flatbed Transport Dimensions (L×W×H)	10.17m×2.50m×2.96m 33ft 4in×8ft 2in×9ft 8in	7.82m×2.50m×2.96m 25ft 8in×8ft 2in×9ft 8in
Standard Container Transport	All Applicable	
Platform Size(L×W)	2.44m×0.91m 8ft×3ft	
Turntable Tailswing	1.61m 5ft 3in	
Ground Clearance	0.41m 1ft 4in	
Wheelbase	2.80m 9ft 2in	
<b>Performance</b>		
S.W.L	454kg 1000lb	
Max. Occupants	3	
Gradeability	RT:45%    ERT:30%    HRT:30%	
Travel Speed(Stowed/Raised)	6.0km/h / 1.1km/h 3.7mph / 0.7mph	
Max. Working Slope	5°	
Turret Rotation	360°Continuous	
Platform Rotation	180°	
Jib Movement	135°	
Main Boom Maximum Angle	68°	
Turning Radius(Inside/Outside)	1.87m / 3.22m 6ft 2in/10ft 7in	
Tyres	385/45-28	
<b>Weight</b>		
Overall Weight	14300kg 31526lb	
<b>Power</b>		
<b>Engine RT</b>	<b>Electric ERT</b>	<b>Hybrid HRT</b>
Emergency Power System 12V Diesel Engine Deutz TD2.9 L4/55.4kW Diesel Tank 135L(35gal) Hydraulic Tank 165L(43gal)	Lithium Battery 80V/420Ah Charger 80V/80A Emergency Power System 12V Driving Motor 54VAC/18kW Hydraulic Tank 165L(43gal)	Lithium Battery 80V/420Ah Charger 80V/80A Emergency Power System 12V Driving Motor 54VAC/18kW Range Extended Engine Kubota Z482/9.8kW Diesel Tank 110L(29gal) Hydraulic Tank 165L(43gal)

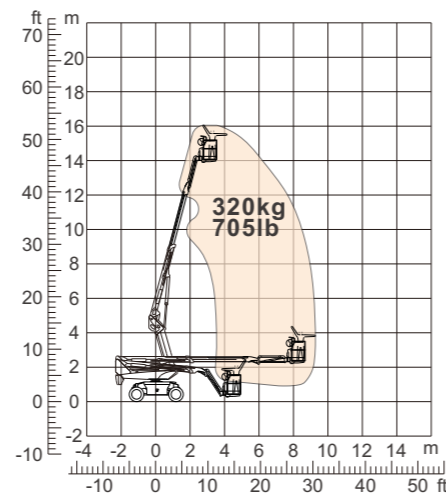




Model	BT22C(RT/ERT/HRT)2	BT20C(RT/ERT/HRT)2				
<b>Dimension</b>						
Max. Working Height	22.22m 72ft 11in	20.23m 66ft 4in				
Max. Platform Height	20.22m 66ft 4in	18.23m 60ft				
Max. Operating Range(+0.6m)	15.41m 50ft 7in	13.36m 44ft				
Max. Platform Range	14.81m 48ft 7in	12.76m 41ft 10in				
Flatbed Transport Dimensions (L×W×H)	6.75m×2.44m×2.70m 22ft 2in×8ft×8ft 10in	7.63m×2.44m×2.68m 25ft×8ft×8ft 9in				
Standard Container Transport	All Applicable					
Platform Size(L×W)	1.83m×0.79m 6ft×2ft 7in					
Turntable Tailswing	1.24m 4ft 1in					
Ground Clearance	0.31m 1ft					
Wheelbase	2.40m 7ft 10in					
<b>Performance</b>						
S.W.L(Unrestricted/Restricted)	320kg 705lb					
Max. Occupants	2					
Gradeability	35%	40%				
Travel Speed(Stowed/Raised)	6.0km/h / 1.1km/h 3.7mph / 0.7mph					
Max. Working Slope	5°					
Turret Rotation	360°Continuous					
Platform Rotation	180°					
Jib Movement	132°					
Main Boom Maximum Angle	75°					
Turning Radius(Inside/Outside)	3.00m / 4.73m 9ft 10in/15ft 6in					
Tyres	315/55D20					
<b>Weight</b>						
Overall Weight	RT:9150kg 20172lb	ERT:9750kg 21495lb	HRT:9600kg 21164lb	RT:8150kg 17967lb	ERT:8750kg 19290lb	HRT:8600kg 18959lb
<b>Power</b>						
<b>Engine RT</b>	<b>Electric ERT</b>	<b>Hybrid HRT</b>				
Emergency Power System 12V	Battery 48V/450Ah	Battery 48V/300Ah				
Diesel Engine Kubota D1105/18.2kW	Charger 48VDC/60A	Charger 48VDC/60A				
Diesel Tank 115L(30gal)	Emergency Power System 12V	Emergency Power System 12V				
Hydraulic Tank 145L(38gal)	Driving Motor 34VAC/9kW	Driving Motor 34AC/9kW				
	Hydraulic Tank 145L(38gal)	Diesel Engine Kubota Z482 9.8kW				
		Diesel Tank 90L(23gal)				
		Hydraulic Tank 145L(38gal)				



BT18C(RT/ERT/HRT)2



BT16C(RT/ERT/HRT)2

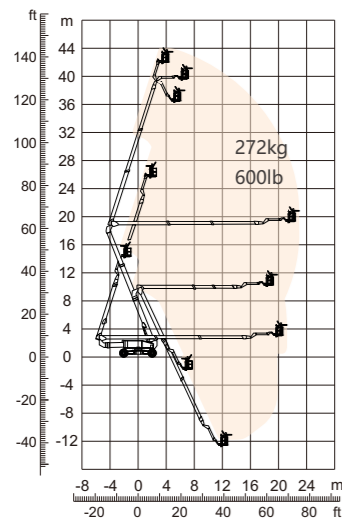
Model	BT18C(RT/ERT/HRT)2	BT16C(RT/ERT/HRT)2				
<b>Dimension</b>						
Max. Working Height	18.26m 59ft 10in	16.33m 53ft 7in				
Max. Platform Height	16.26m 53ft 4in	14.33m 47ft				
Max. Operating Range(+0.6m)	11.32m 37ft 2in	9.32m 30ft 7in				
Max. Platform Range	10.72m 35ft 2in	8.72m 28ft 7in				
Flatbed Transport Dimensions (L×W×H)	6.48m×2.44m×2.68m 21ft 3in×8ft×8ft 9in	5.48m×2.44m×2.68m 17ft 12in×8ft×8ft 9in				
Standard Container Transport	All Applicable					
Platform Size(L×W)	1.83m×0.79m 6ft×2ft 7in					
Turntable Tailswing	1.18m 3ft 10in					
Ground Clearance	0.31m 1ft					
Wheelbase	2.40m 7ft 10in					
<b>Performance</b>						
S.W.L	320kg 705lb					
Max. Occupants	2					
Gradeability	40%					
Travel Speed(Stowed/Raised)	6.0km/h / 1.1km/h 3.7mph / 0.7mph					
Max. Working Slope	5°					
Turret Rotation	360°Continuous					
Platform Rotation	180°					
Jib Movement	132°					
Main Boom Maximum Angle	75°					
Turning Radius(Inside/Outside)	3.00m / 4.73m 9ft 10in/15ft 6in					
Tyres	315/55D20					
<b>Weight</b>						
Overall Weight	RT:7300kg 16093lb	ERT:7750kg 17085lb	HRT:7750kg 17085lb	RT:6700kg 14770lb	ERT:7150kg 15763lb	HRT:7150kg 15763lb
<b>Power</b>						
<b>Engine RT</b>	<b>Electric ERT</b>	<b>Hybrid HRT</b>				
Emergency Power System 12V	Battery 48V/375Ah	Battery 48V/300Ah				
Diesel Engine Kubota D1105/18.2kW	Charger 48VDC/60A	Charger 48VDC/60A				
Diesel Tank 115L(30gal)	Emergency Power System 12V	Emergency Power System 12V				
Hydraulic Tank 145L(38gal)	Driving Motor 34AC/9kW	Driving Motor 34AC/9kW				
	Hydraulic Tank 145L(38gal)	Diesel Engine Kubota Z482 9.8kW				
		Diesel Tank 90L(23gal)				
		Hydraulic Tank 145L(38gal)				



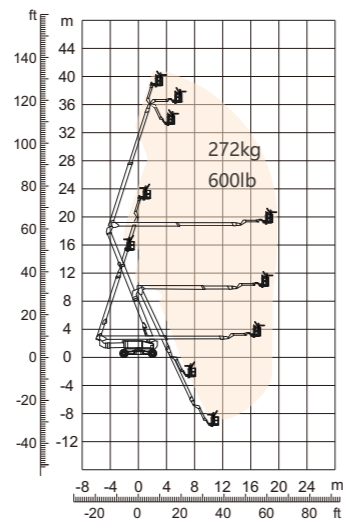
Model	BA44(RT/ERT/HRT)	BA41(RT/ERT/HRT)	BA36(RT/ERT/HRT)
<b>Dimension</b>			
Max. Working Height	44.06m 144ft 7in	41.08m 134ft 9in	36.20m 118ft 9in
Max. Platform Height	42.06m 138ft	39.08m 128ft 2in	34.20m 112ft 2in
Max. Operating Range(+0.6m)	22.97m 75ft 4in	19.86m 65ft 2in	19.20m 63ft
Max. Up And Over Clearance	18.80m 61ft 8in	18.80m 61ft 8in	15.75m 51ft 8in
Max. Down Probing Depth	9.65m 31ft 8in	6.83m 22ft 5in	4.37m 14ft 4in
Flatbed Transport Dimensions (L×W×H)	11.97m×2.44m×3.10m 39ft 3in×8ft×10ft 2in	11.95m×2.44m×3.10m 39ft 2in×8ft×10ft 2in	11.91m×2.44m×3.03m 39ft 1in×8ft×10ft
Standard Container Transport	All Applicable	All Applicable	All Applicable
Overall Length(Stowed)	13.52m 44ft 4in	14.70m 48ft 3in	14.11m 46ft 3in
Overall Width(Axle Expanded)	4.17m 13ft 8in	4.17m 13ft 8in	4.17m 13ft 8in
Overall Width(Axle Retracted)	2.44m 8ft	2.44m 8ft	2.44m 8ft
Overall Height(Stowed)	3.10m 10ft 2in	3.10m 10ft 2in	3.03m 9ft 11in
Platform Size(Length × Width)	2.44m×0.91m 8ft×2ft 12in	2.44m×0.91m 8ft×2ft 12in	2.44m×0.91m 8ft×2ft 12in
Turntable Tailswing(Articulating Boom Lift,Extended)	2.47m 8ft 1in	2.47m 8ft 1in	1.22m 4ft
Turntable Tailswing(Articulating Boom Down,Retracted)	3.45m 11ft 4in	3.45m 11ft 4in	4.26m 14ft
Ground Clearance		0.40m 1ft 4in	
Wheelbase(Axle Expanded)		4.07m 13ft 4in	
Wheelbase(Axle Retracted)		4.27m 14ft	
<b>Performance</b>			
S.W.L		272kg 600lb	
Max. Occupants		2	
Gradeability		45%	
Travel Speed(Stowed/Raised)		6.0km/h / 1.1km/h 3.7mph / 0.7mph	
Max. Working Slope		5°	
Turret Rotation		360°连续	
Platform Rotation		180°	
Jib Movement		226°	
Main Boom Maximum Angle		72.23°	
Turning Radius(Inside/Outside)Axle Expanded		2.99m / 5.41m 10ft / 17ft 9in	
Turning Radius(Inside/Outside)Axle Retracted		8.27m / 10.85m 27ft 1in / 35ft 7in	
Tyres		445 / 50D710	

<b>Weight</b>	
Overall Weight	RT:23900kg 52690lb
	ERT:23950kg 52801lb
	HTT:23950kg 52801lb
	RT:23700kg 52250lb
	ERT:23750kg 52360lb
	HRT:23750kg 52360lb
	RT:22000kg 48502lb
	ERT:22050kg 48612lb
	HRT:22050kg 48612lb

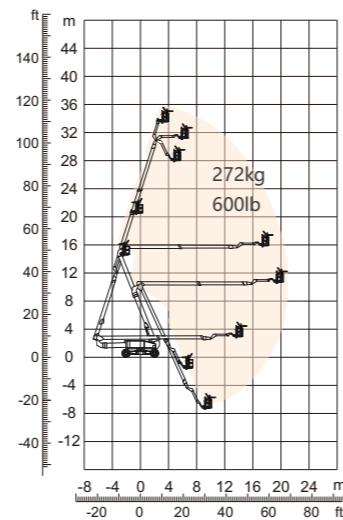
<b>Power</b>		
<b>Engine RT</b>	<b>Electric ERT</b>	<b>Hybrid HRT</b>
Emergency Power System 12V	Lithium Battery 358.4V/228Ah	Lithium Battery 358.4V/173Ah
Diesel Engine Deutz TD2.9 L4/55.4kW	Charger 360V/30A	Charger 360V/30A
Diesel Tank 135L(39gal)	Emergency Power System 12V	Emergency Power System 12V
Hydraulic Tank 230L(61gal)	Pump Motor 360V/30kW	Pump Motor 360V/30kW
	Hydraulic Tank 230L(61gal)	Range Extended Engine Kubota D1105/18.2kW
		Diesel Tank 100L(26gal)
		Hydraulic Tank 230L



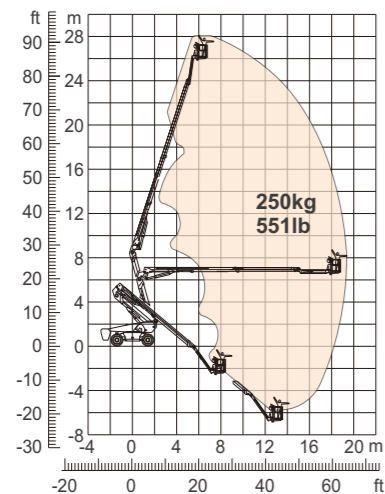
BA44(RT/ERT/HRT)



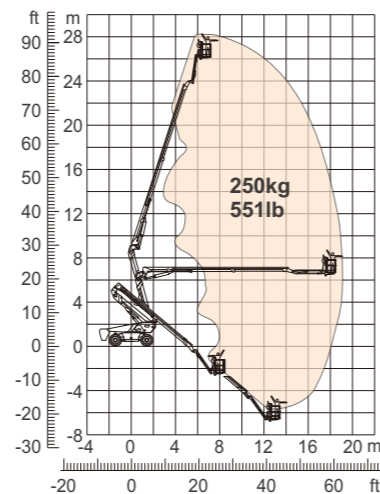
BA41(RT/ERT/HRT)



BA36(RT/ERT/HRT)

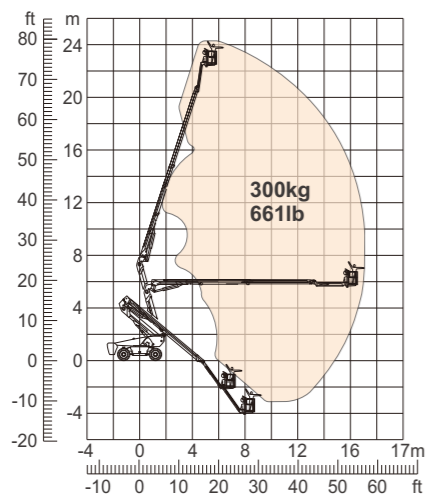


BA28(RT/ERT/HRT)

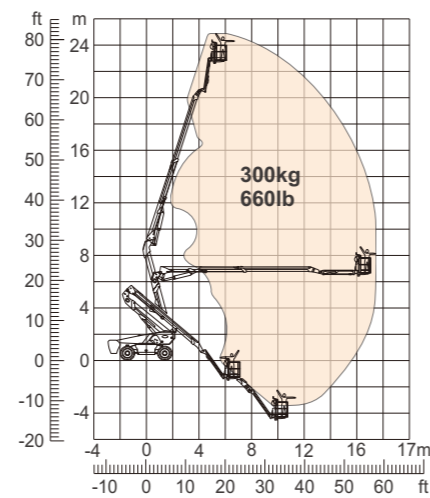


BA28B(RT/ERT/HRT)

Model	BA28(RT/ERT/HRT)	BA28B(RT/ERT/HRT)
<b>Dimension</b>		
Max. Working Height	28.10m 92ft 2in	28.15m 92ft 4in
Max. Platform Height	26.10m 85ft 8in	26.15m 85ft 9in
Max. Operating Range(+0.6m)	19.40m 63ft 8in	19.04m 62ft 6in
Max. Platform Range	18.80m 61ft 8in	18.44m 60ft 6in
Max. Up And Over Clearance	9.14m 30ft	9.14m 30ft
Max. Down Probing Depth	6.61m 21ft 8in	5.17m 16ft 11in
Flatbed Transport Dimensions (L×W×H)	11.85m×2.50m×2.89m 38ft 10in×8ft 2in×9ft 6in	9.22m×2.50m×3.00m 30ft 3in×8ft 2in×9ft 10in
Standard Container Transport	All Applicable	
Platform Size(L×W)	2.44m×0.91m 8ft×3ft	
Turntable Tailswing	1.61m 5ft 3in	
Ground Clearance	0.41m 1ft 4in	
Wheelbase	2.80m 9ft 2in	
<b>Performance</b>		
S.W.L	250kg 551lb	
Max. Occupants	2	3
Gradeability	RT:45%    ERT:30%    HRT:30%	
Travel Speed(Stowed/Raised)	6.0km/h / 1.1km/h 3.7mph / 0.7mph	
Max. Working Slope	5°	
Turret Rotation	360° Continuous	
Platform Rotation	180°	
Jib Movement	135°	
Main Boom Maximum Angle	72°	
Turning Radius(Inside/Outside)	1.87m / 3.22m 6ft 2in/10ft 7in	
Tyres	385/45-28	
<b>Weight</b>		
Overall Weight	18400kg 40565lb	18400kg 40565lb
<b>Power</b>		
<b>Engine RT</b>	<b>Electric ERT</b>	<b>Hybrid HRT</b>
Emergency Power System 12V Diesel Engine Deutz TD2.9 L4/55.4kW Diesel Tank 135L(35gal) Hydraulic Tank 165L(43gal)	Lithium Battery 80V/520Ah Charger 80V/80A Emergency Power System 12V Driving Motor 54VAC/18kW Hydraulic Tank 165L(43gal)	Lithium Battery 80V/420Ah Charger 80V/80A Emergency Power System 12V Driving Motor 54VAC/18kW Range Extended Engine Kubota Z482/9.8kW Diesel Tank 110L(29gal) Hydraulic Tank 165L(43gal)

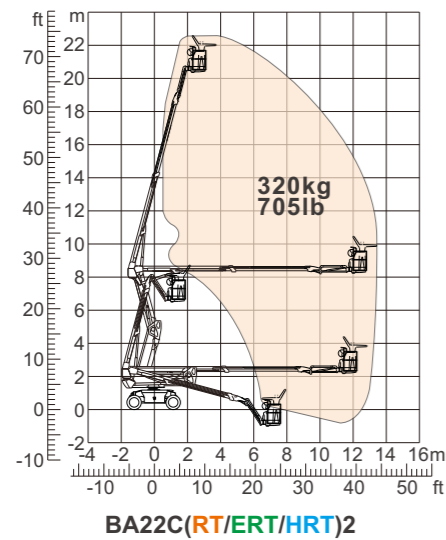


BA24(RT/ERT/HRT)

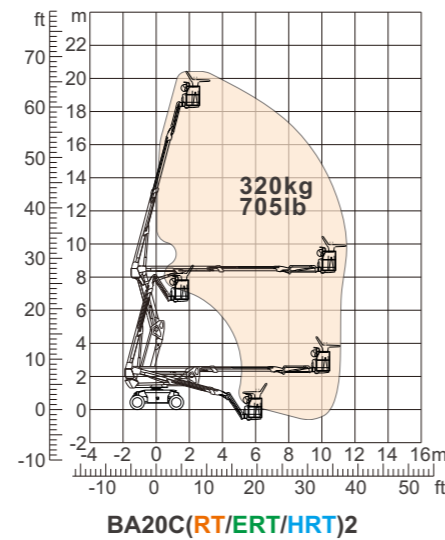


BA24B(RT/ERT/HRT)

Model	BA24(RT/ERT/HRT)	BA24B(RT/ERT/HRT)
<b>Dimension</b>		
Max. Working Height	24.30m 79ft 9in	24.82m 81ft 5in
Max. Platform Height	22.30m 73ft 2in	22.82m 74ft 10in
Max. Operating Range(+0.6m)	17.10m 56ft 1in	17.60m 57ft 9in
Max. Platform Range	16.50m 54ft 2in	17.00m 54ft 2in
Max. Up And Over Clearance	9.14m 30ft	9.14m 30ft
Max. Down Probing Depth	4.03m 13ft 3in	2.92m 9ft 7in
Flatbed Transport Dimensions (L×W×H)	9.85m×2.50m×2.89m 32ft 4in×8ft 2in×9ft 6in	7.67m×2.50m×3.00m 25ft 1in×8ft 2in×9ft 10in
Standard Container Transport	All Applicable	
Platform Size(L×W)	2.44m×0.91m 8ft×3ft	
Turntable Tailswing	1.61m 5ft 3in	
Ground Clearance	0.41m 1ft 4in	
Wheelbase	2.80m 9ft 2in	
<b>Performance</b>		
S.W.L	300kg 661lb	
Max. Occupants	2	3
Gradeability	RT:45%    ERT:30%    HRT:30%	
Travel Speed(Stowed/Raised)	6.0km/h / 1.1km/h 3.7mph / 0.7mph	
Max. Working Slope	5°	
Turret Rotation	360°Continuous	
Platform Rotation	180°	
Jib Movement	135°	
Main Boom Maximum Angle	72°	
Turning Radius(Inside/Outside)	1.87m / 3.22m 6ft 2in/10ft 7in	
Tyres	385/45-28	
<b>Weight</b>		
Overall Weight	17200kg 37919lb	17200kg 37919lb
<b>Power</b>		
<b>Engine RT</b>	<b>Electric ERT</b>	<b>Hybrid HRT</b>
Emergency Power System 12V Diesel Engine Deutz TD2.9 L4/55.4kW Diesel Tank 135L(35gal) Hydraulic Tank 165L(43gal)	Lithium Battery 80V/420Ah Charger 80V/80A Emergency Power System 12V Driving Motor 54VAC/18kW Hydraulic Tank 165L(43gal)	Lithium Battery 80V/420Ah Charger 80V/80A Emergency Power System 12V Driving Motor 54VAC/18kW Range Extended Engine Kubota Z482/9.8kW Diesel Tank 110L(29gal) Hydraulic Tank 165L(43gal)

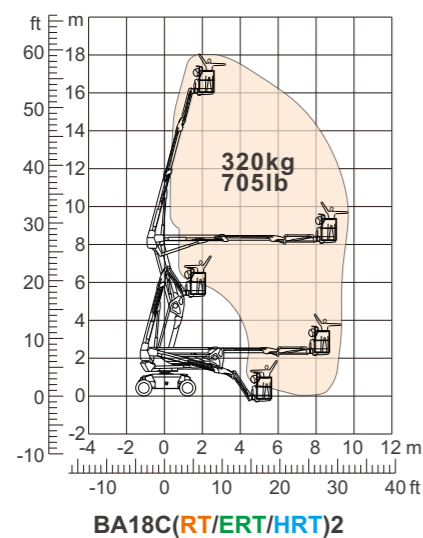


BA22C(RT/ERT/HRT)2

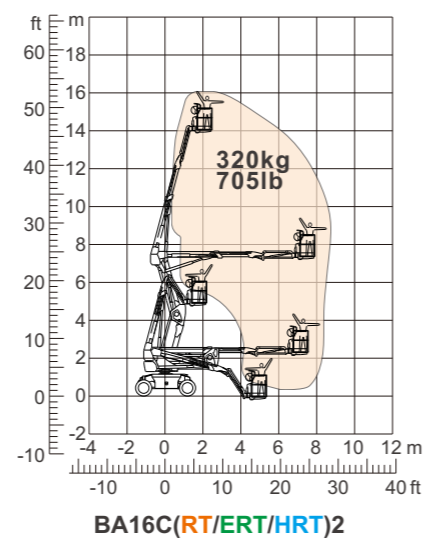


BA20C(RT/ERT/HRT)2

Model	BA22C(RT/ERT/HRT)2	BA20C(RT/ERT/HRT)2				
<b>Dimension</b>						
Max. Working Height	22.04m 72ft 4in	20.15m 66ft 1in				
Max. Platform Height	20.04m 65ft 9in	18.15m 59ft 6in				
Max. Operating Range(+0.6m)	13.17m 43ft 2in	11.13m 36ft 6in				
Max. Platform Range	12.57m 41ft 3in	10.53m 34ft 6in				
Max. Up And Over Clearance	8.18m 26ft 10in	8.18m 26ft 10in				
Max. Down Probing Depth	1.74m 5ft 8in	1.25m 4ft 1in				
Flatbed Transport Dimensions (L×W×H)	7.36m×2.44m×2.59m 24ft 2in×8ft×8ft 6in	6.41m×2.44m×2.59m 21ft×8ft×8ft 6in				
Standard Container Transport	All Applicable					
Platform Size(L×W)	1.83m×0.79m 6ft×2ft 7in					
Turntable Tailswing	0.70m 2ft 4in	0.65m 2ft 2in				
Ground Clearance	0.31m 1ft					
Wheelbase	2.40m 7ft 10in					
<b>Performance</b>						
S.W.L	320kg 705lb					
Max. Occupants	2					
Gradeability	35%	40%				
Travel Speed(Stowed/Raised)	6.0km/h / 1.1km/h 3.7mph / 0.7mph					
Max. Working Slope	5°					
Turret Rotation	360° Continuous					
Platform Rotation	180°					
Jib Movement	132°					
Main Boom Maximum Angle	75°	73°				
Turning Radius(Inside/Outside)	3.00m / 4.73m 9ft 10in/15ft 6in					
Tyres	315/55D20					
<b>Weight</b>						
Overall Weight	RT:9700kg 21384lb	ERT:10300kg 22708lb	HRT:10150kg 22376lb	RT:8450kg 18629lb	ERT:9050kg 19952lb	HRT:8900kg 19621lb
<b>Power</b>						
<b>Engine RT</b>	<b>Electric ERT</b>	<b>Hybrid HRT</b>				
Emergency Power System 12V	Battery 48V/450Ah	Battery 48V/300Ah				
Diesel Engine Kubota D1105/18.2kW	Charger 48VDC/60A	Charger 48VDC/60A				
Diesel Tank 115L(30gal)	Emergency Power System 12V	Emergency Power System 12V				
Hydraulic Tank 145L(38gal)	Driving Motor 34AC/9kW	Driving Motor 34AC/9kW				
	Hydraulic Tank 145L(38gal)	Diesel Engine Kubota Z482 9.8kW				
		Diesel Tank 90L(23gal)				
		Hydraulic Tank 145L(38gal)				



BA18C(RT/ERT/HRT)2



BA16C(RT/ERT/HRT)2

Model	BA18C(RT/ERT/HRT)2	BA16C(RT/ERT/HRT)2				
<b>Dimension</b>						
Max. Working Height	18.11m 59ft 6in	16.27m 53ft 4in				
Max. Platform Height	16.11m 52ft 10in	14.27m 46ft 10in				
Max. Operating Range(+0.6m)	9.45m 31ft	8.69m 28ft 6in				
Max. Platform Range	8.85m 29ft	8.09m 26ft 6in				
Max. Up And Over Clearance	8.18m 26ft 10in	7.30m 23ft 11in				
Max. Down Probing Depth	0.68m 2ft 3in	0.42m 1ft 4in				
Flatbed Transport Dimensions (L×W×H)	5.47m×2.44m×2.59m 17ft 11in×8ft×8ft 6in	5.17m×2.44m×2.58m 16ft 11in×8ft×8ft 5in				
Standard Container Transport	All Applicable					
Platform Size(L×W)	1.83m×0.79m 6ft×2ft 7in					
Turntable Tailswing	0.13m 5in	0m 0in				
Ground Clearance	0.31m 1ft					
Wheelbase	2.40m 7ft 10in					
<b>Performance</b>						
S.W.L	320kg 705lb					
Max. Occupants	2					
Gradeability	40%					
Travel Speed(Stowed/Raised)	6.0km/h / 1.1km/h 3.7mph / 0.7mph					
Max. Working Slope	5°					
Turret Rotation	360°Continuous					
Platform Rotation	180°					
Jib Movement	132°					
Main Boom Maximum Angle	75°					
Turning Radius(Inside/Outside)	3.00m / 4.73m 9ft 10in/15ft 6in					
Tyres	315/55D20					
<b>Weight</b>						
Overall Weight	RT:8200kg 18077lb	ERT:8650kg 19069lb	HRT:8650kg 19069lb	RT:7850kg 17306lb	ERT:8300kg 18298lb	HRT:8300kg 18298lb
<b>Power</b>						
<b>Engine RT</b>	<b>Electric ERT</b>	<b>Hybrid HRT</b>				
Emergency Power System 12V	Battery 48V/375Ah	Battery 48V/300Ah				
Diesel Engine Kubota D1105/18.2kW	Charger 48VDC/60A	Charger 48VDC/60A				
Diesel Tank 115L(30gal)	Emergency Power System 12V	Emergency Power System 12V				
Hydraulic Tank 145L(38gal)	Driving Motor 34AC/9kW	Driving Motor 34AC/9kW				
	Hydraulic Tank 145L(38gal)	Diesel Engine Kubota Z482 9.8kW				
		Diesel Tank 90L(23gal)				
		Hydraulic Tank 145L(38gal)				