

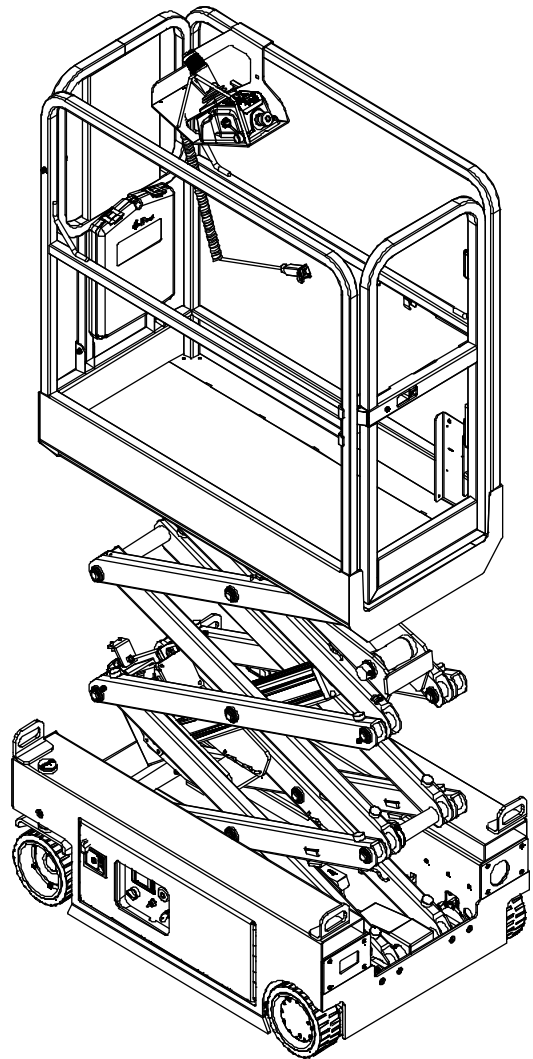
DINGLI

Exceed · New Height

Parts Manual

JCPT0507PA

From SN
JPPA023A00072-



CE ANSI

Part Number: SM012120117

Version Number: Rev1.1

July 2023 Printing

DINGLI

Foreword

We are very appreciated for your interesting with Dingli machine and choosing it for your application. Our priority above all is you can use the machine safely for your application and you can benefit from the Dingli machine mostly. For these reason we hope you can:

1. Comply with employer, job site and local governmental rules.
2. Safeguard your commitment to quality by always using genuine Dingli spare parts. Remember, Dingli cannot accept responsibility for the failure of a separator equipped with non-original spare parts. We guarantee the quality and reliability of our products.
3. All sketch maps of parts shown in this manual are for reference only, it is the practical that counts. This manual includes all the latest information up to the date when it was printed. All responsibilities for the revision and explanation of the manual rest with the Dingli. We also preserve the right to edit the technology characteristic and content of the manual.
4. Anyone who read the manual or used the machine, is encouraged to notify Dingli Machinery Co, Ltd of any errors or send in suggestions for improvement. All communications will be carefully considered for future printings of this and other manuals, certainly if you have any question about the machine, please contact with our team by dialing technical support phone, sending email, or any methods you want, etc. Our contact information as bellow:

Please contact with:

DINGLI AWP INDIA PRIVATE LIMITED

Phone: +91-98846 48464

Email: support@dinglisaarc.com

Table of Contents

Section 1 Chassis

101.1 Steer Linkage and Wheels Assembly	2
102.1 Drive Wheel Assembly	5
103.1 Pothole Protection Assembly	7
104.1 Right Tray Assembly	9
105.1 Left Tray Assembly	11
106.1 Ground Control Assembly	14
107.1 Charger and Accessories	15
108.1 Motor Controller Assembly	17
108.2 Motor Controller Assembly (Option).....	18

Section 2 Scissor

201.1 Scissor Assembly	20
202.1 Electric Cylinder Assembly	23
202.2 Electric Cylinder Assembly	25

Section 3 Platform

301.1 Platform Assembly	28
302.1 Platform Control Assembly	30
302.2 Platform Control Assembly(with cover).....	31
303.1 Platform Control Box Assembly	32

Section 4 Electrical System

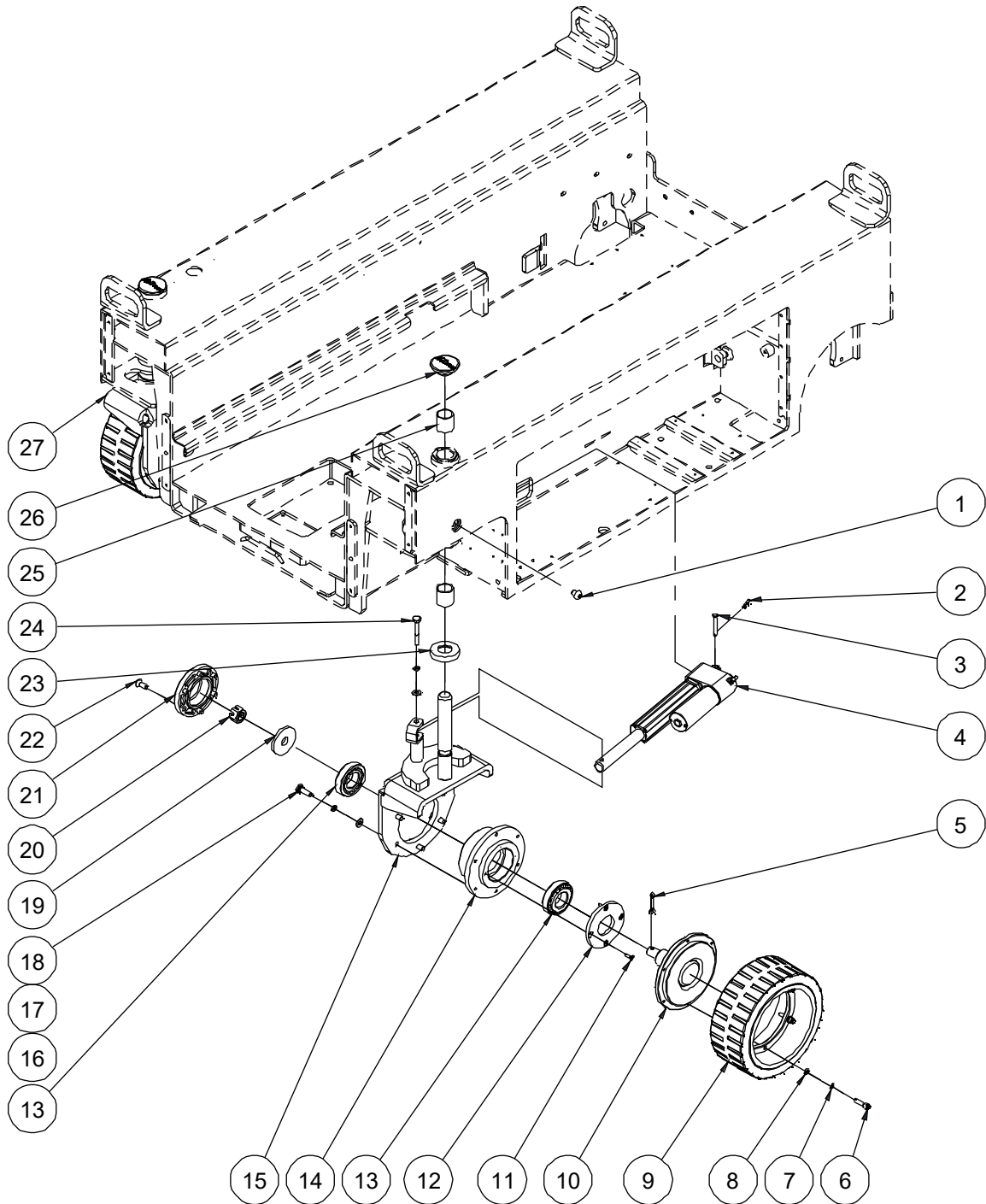
401.1 Electrical Harness	35
--------------------------------	----

Section 5 Decal

501.1 Decals with Words (CE).....	38
501.2 Decals with Words (ANSI).....	41
502.1 Decals with Symbols (CE).....	44
502.2 Decals with Symbols (ANSI)	47

Section 1 Chassis

101.1 Steer Linkage and Wheels Assembly



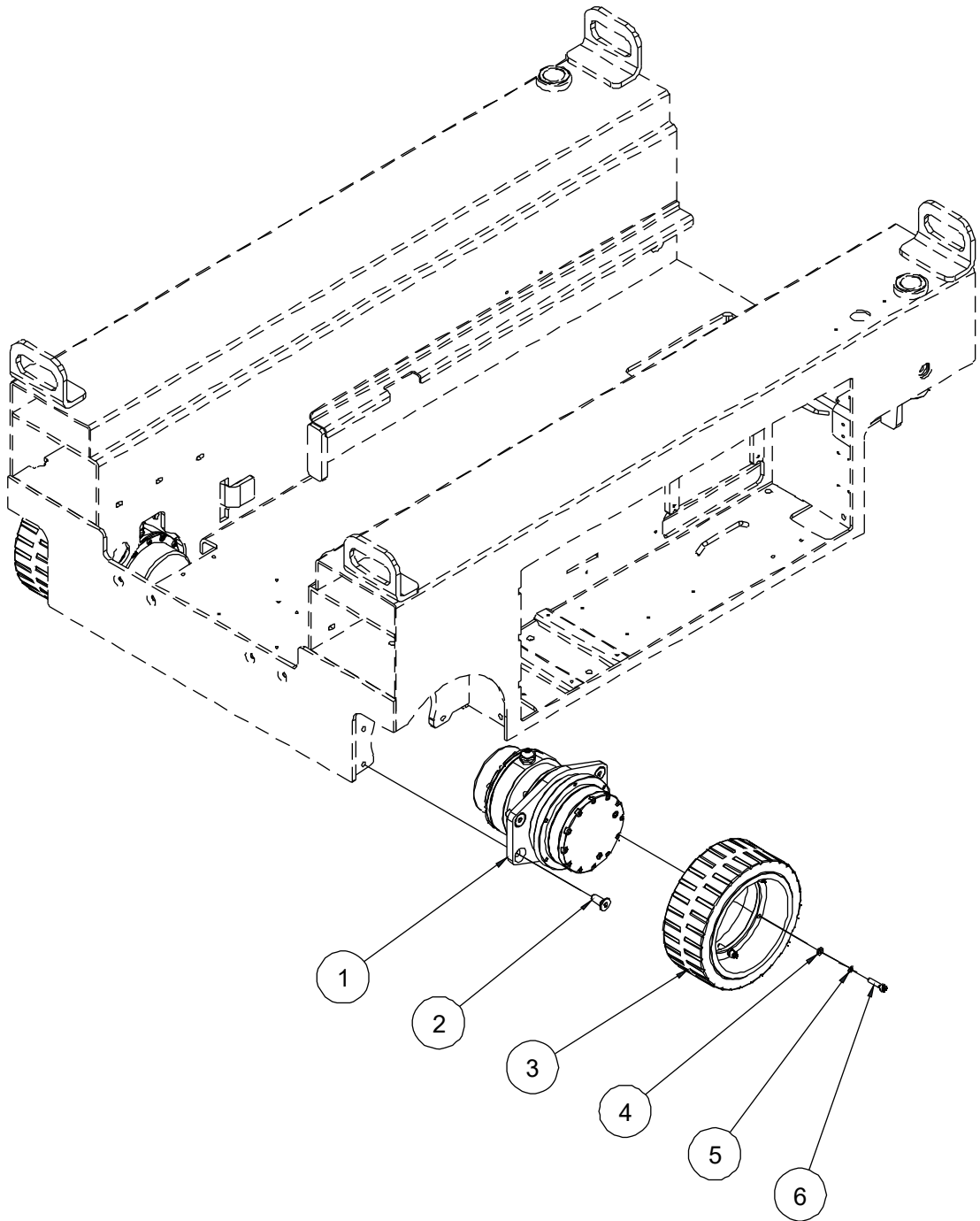
101.1 Steer Linkage and Wheels Assembly

Item	Part No.	Description	Qty.
1	10018101	Screw	2
2	00000675	Cotter pin GB/T 91 3.2×16	2
3	10017128	Pin	2
4	10017218	Electric cylinder unit (LT)	2
--	10025137	Electric cylinder	1
--	10025138	Motor	1
4	10022891	Electric cylinder unit (HL)	2
--	10025164	Electric cylinder	1
--	10025169	Motor	1
5	00002405	Cotter pin GB/T 91 4×32	2
6	00001034	Screw GB/T 70.1 M6×25	12
7	00000621	Washer GB/T 93 6	12
8	00008590	Washer GB/T 848 6	12
9	10019916	Wheel	2
10	10018105	Spindle	2
11	00000822	Screw GB/T 70.3 M5×16	8
12	10001502	Bearing cover	2
13	00001129	Bearing 30206 GB/T 297	4
14	10018115	Connection plate	2
15	10019921	Steer yoke weldment	1
16	00000608	Washer GB/T 97.1 8	14
17	00000609	Washer GB/T 93 8	14
18	00000993	Bolt GB/T 5783 M8×25	12
19	10001104	Washer	2
20	00002077	Nut GB/T 9459 M16×1.5	2
21	10000638	Cap	2
22	00000765	Screw GB/T 70.3 M8×20	12
23	10021998	Washer	2
24	00002089	Bolt GB/T 5782 M8×50	2

101.1 Steer Linkage and Wheels Assembly

25	92048521	8813-253030 Bearing	4
26	10017084	Cover	2
27	10019918	Steer yoke weldment	1

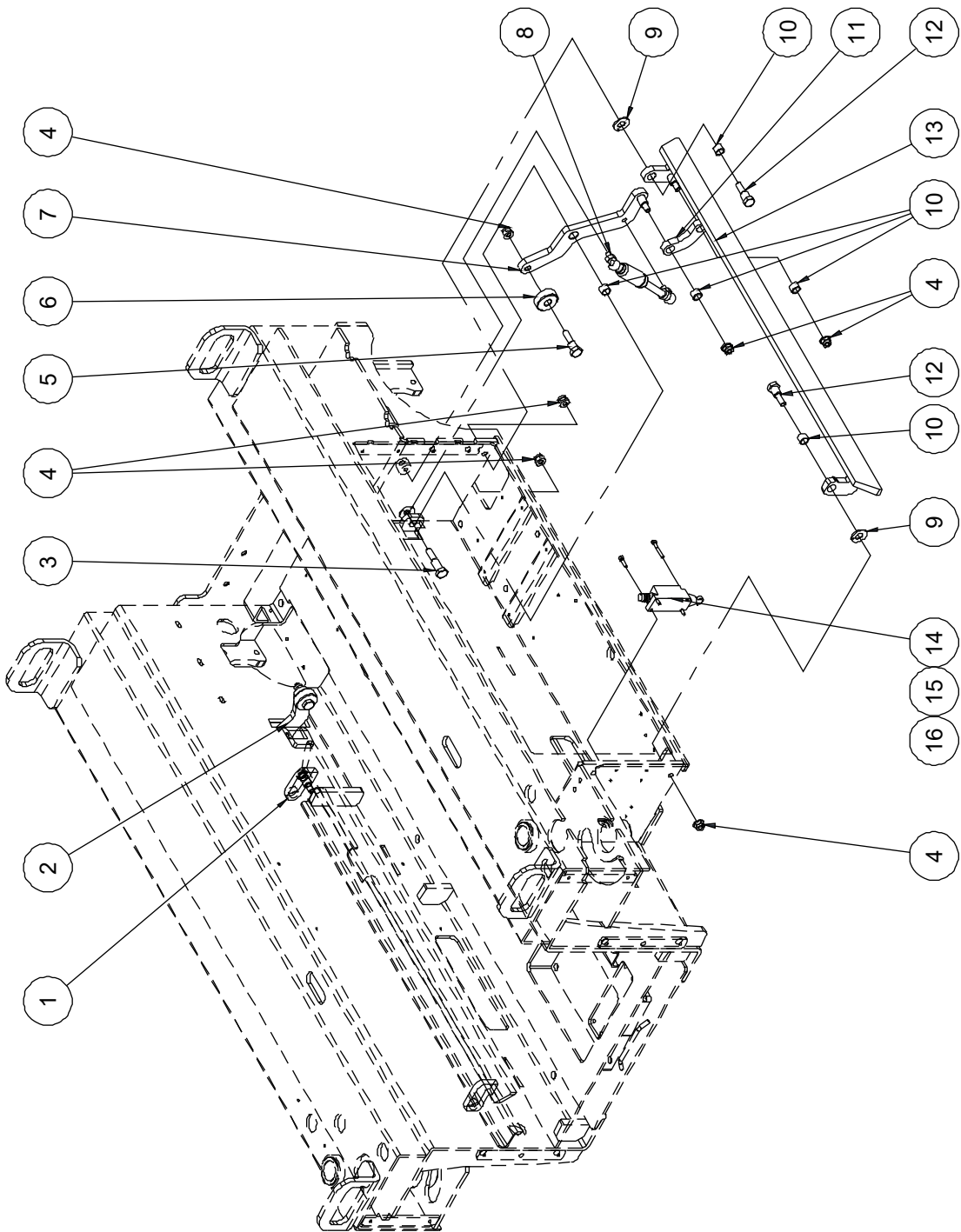
102.1 Drive Wheel Assembly



102.1 Drive Wheel Assembly

Item	Part No.	Description	Qty.
1	00009035	Drive motor assembly	2
--	00009036	Reducer	1
--	00008603	Motor (with brake)	1
--	00008604	Brake	1
2	00000846	Screw GB/T 70.3 M10×25	8
3	10019916	Wheel	2
4	00008590	Washer GB/T 848 6	12
5	00000621	Washer GB/T 93 6	12
6	00001034	Screw GB/T 70.1 M6×25	12

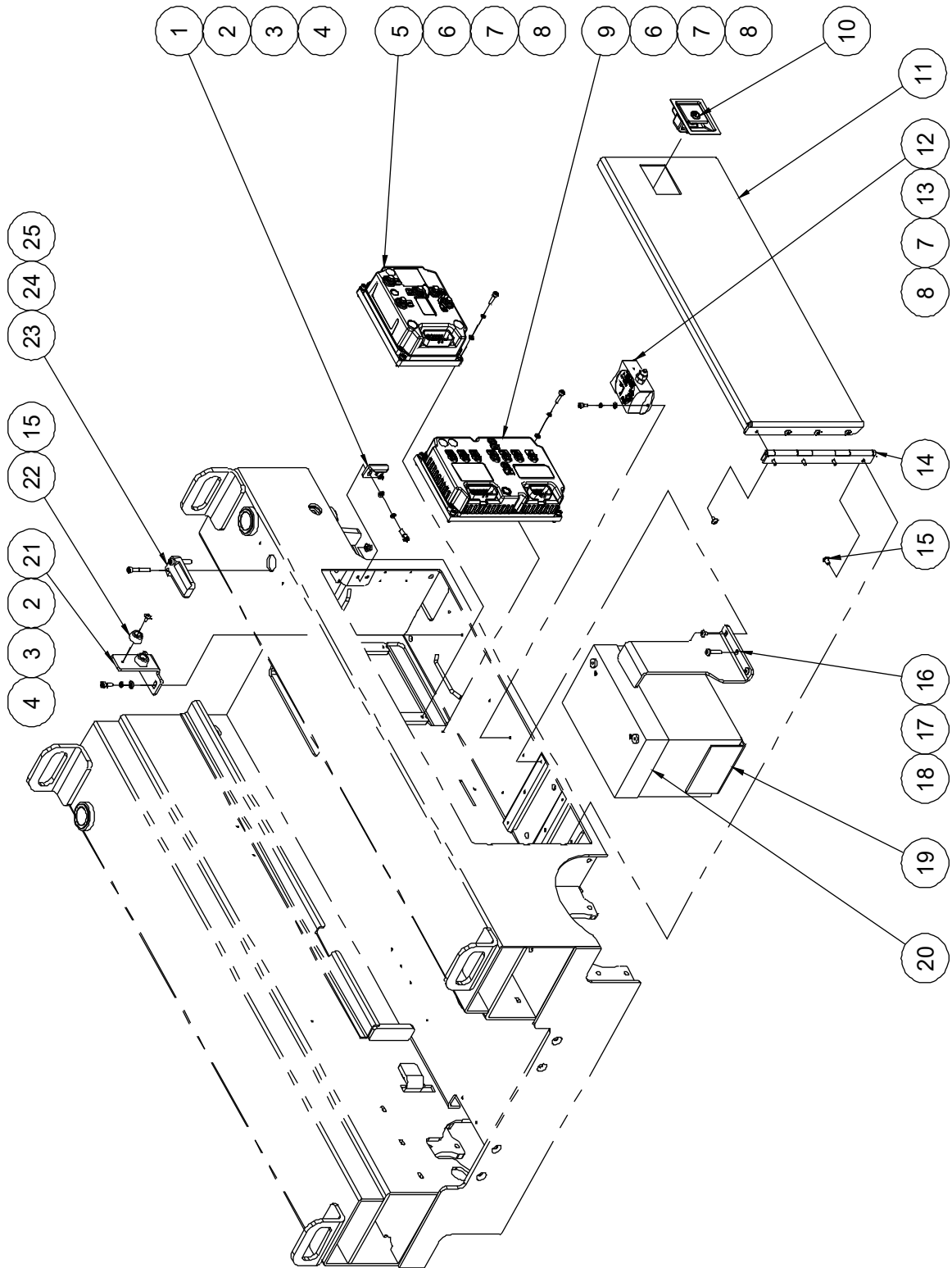
103.1 Pothole Protection Assembly



103.1 Pothole Protection Assembly

Item	Part No.	Description	Qty.
1	10017141	Pothole guard weldment	1
2	10017151	Linkage weldment	1
3	10017157	Pin	2
4	00002575	Nut GB/T 6183.1 M8	12
5	10017158	Pin	2
6	10017159	Roller	2
7	10017152	Linkage weldment	1
8	10017154	Gas shock	2
9	00000388	8832-12 Bearing	4
10	00000344	8812-121410 Bearing	10
11	10017146	Pothole link plate	2
12	10017150	Pin	4
13	10017144	Pothole guard weldment	1
14	00002419	Limit switch	2
15	00002415	Screw GB/T 70.1 M4×30	4
16	00000604	Screw GB/T 70.1 M4×16	4

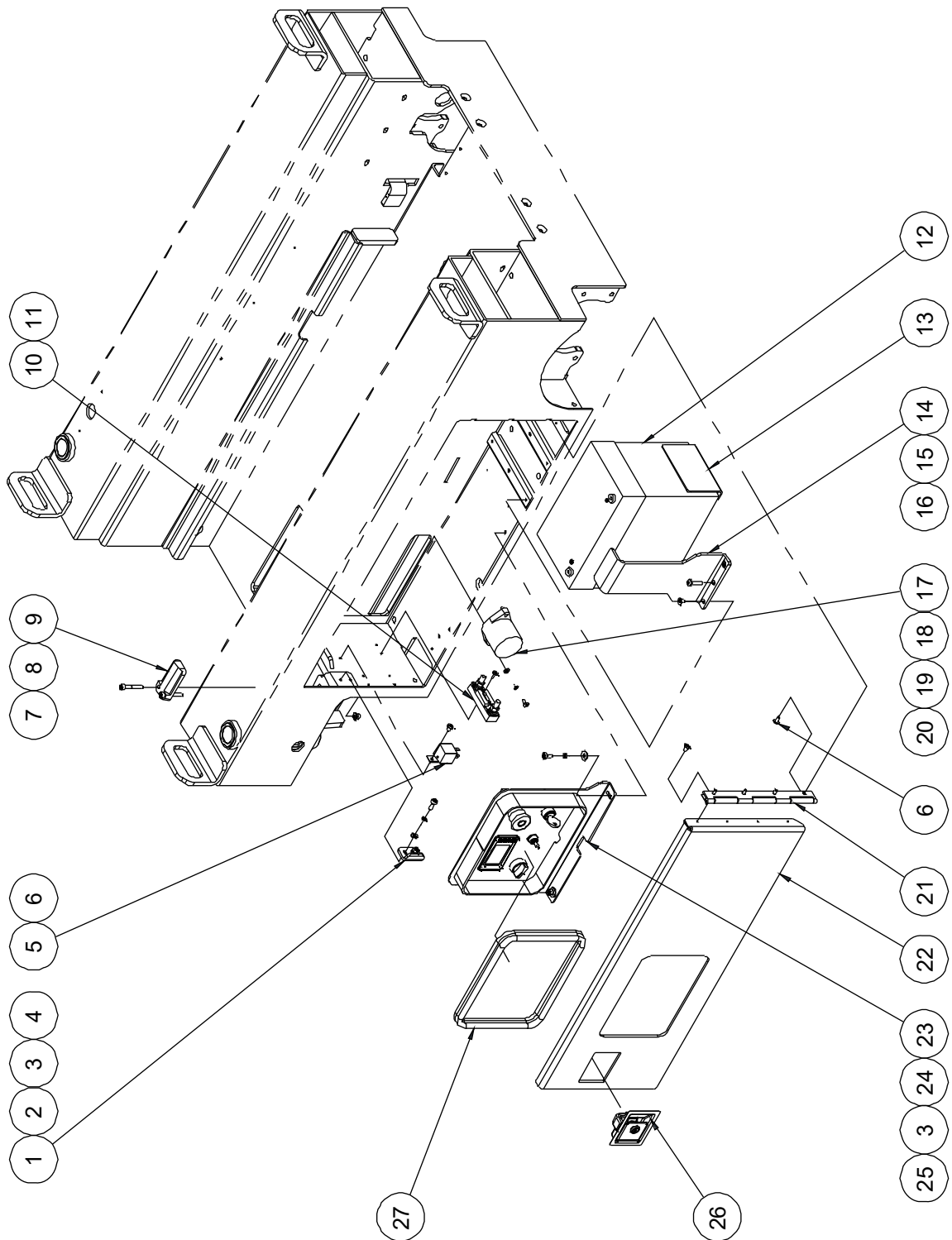
104.1 Right Tray Assembly



104.1 Right Tray Assembly

Item	Part No.	Description	Qty.
1	10017213	Lock clasp	1
2	00000876	Screw GB/T 70.1 M6×16	4
3	00000621	Washer GB/T 93 6	6
4	00000620	Washer GB/T 97.1 6	6
5	00008607	Motor controller	1
6	00000817	Screw GB/T 70.1 M5×20	8
7	00000606	Washer GB/T 93 5	11
8	00000605	Washer GB/T 97.1 5	11
9	00008608	Motor controller	1
10	10017167	Latch	1
11	10019930	Side door 1	1
12	00000694	Tilt sensor	1
13	00001030	Screw GB/T 70.1 M5×10	2
14	10017163	Hinge	1
15	00000999	Screw GB/T 973 M5×10	10
16	10023476	Locating plate 2	1
17	00001010	Screw GB/T 973 M5×8	4
18	00003877	Screw GB/T 818 M6×25 - H	2
19	10023475	Locating plate	2
20	00004882	Battery	1
	00009944	Lithium Battery	1
21	10019941	Plate	1
22	10000376	Bumper	2
23	10019936	Spacer	1
24	00004418	Screw GB/T 70.1 M6×40	2
25	00002574	Nut GB/T 6183.1 M6	2

105.1 Left Tray Assembly



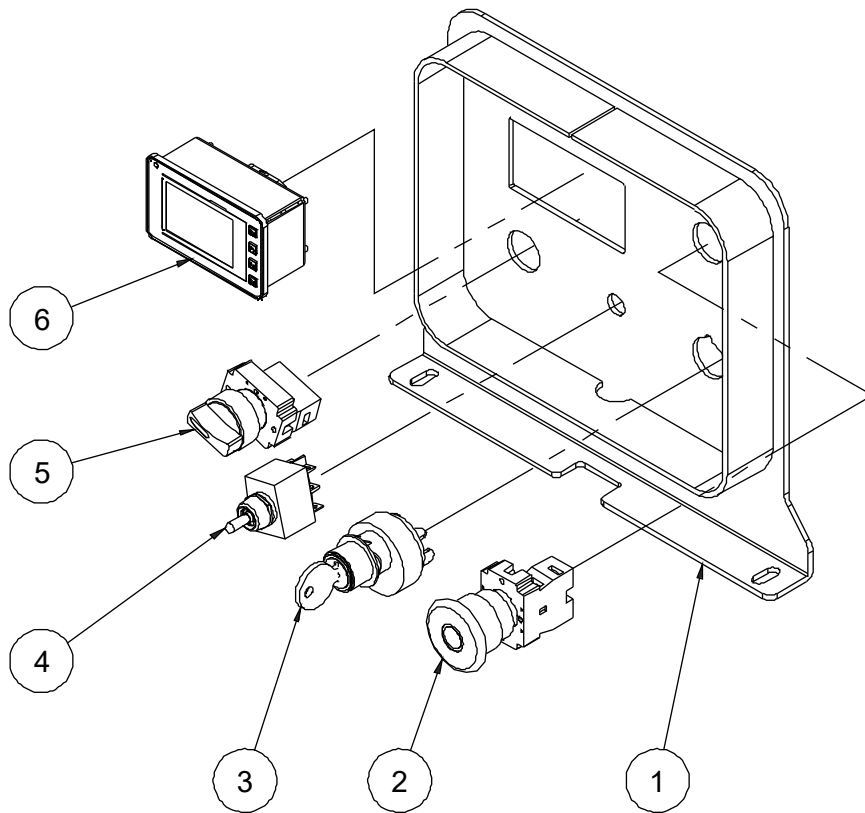
105.1 Left Tray Assembly

Item	Part No.	Description	Qty.
1	10017213	Lock clasp	1
2	00000876	Screw GB/T 70.1 M6×16	2
3	00000621	Washer GB/T 93 6	4
4	00000620	Washer GB/T 97.1 6	2
5	00002561	Relay	1
6	00000999	Screw GB/T 973 M5×10	9
7	00004418	Screw GB/T 70.1 M6×40	2
8	00002574	Nut GB/T 6183.1 M6	2
9	10019936	Spacer	1
10	00002074	150A Fuse assembly	1
--	00002562	150A Fuse	1
--	00000757	Fuse seat	1
11	00001003	Screw GB/T 973 M4×12	2
12	00004882	Battery	1
	00009944	Lithium Battery	1
13	10023475	Locating plate	2
14	10023476	Locating plate 2	1
15	00001010	Screw GB/T 973 M5×8	4
16	00003877	Screw GB/T 818 M6×25 - H	2
17	00008196	DC Contactor	1
18	00002319	Screw GB/T 818 M5×10 - H	2
19	00000605	Washer GB/T 97.1 5	2
20	00000606	Washer GB/T 93 5	2
21	10017163	Hinge	1
22	10019938	Side door 2	1
23		Ground control assembly (refer to 106.1)	1
24	00002029	Screw GB/T 70.1 M6×12	2
25	00002583	Washer GB/T 96.1 6	2
26	10017167	Latch	1

105.1 Left Tray Assembly

Item	Part No.	Description	Qty.
27	10019927	Rubber strip	1

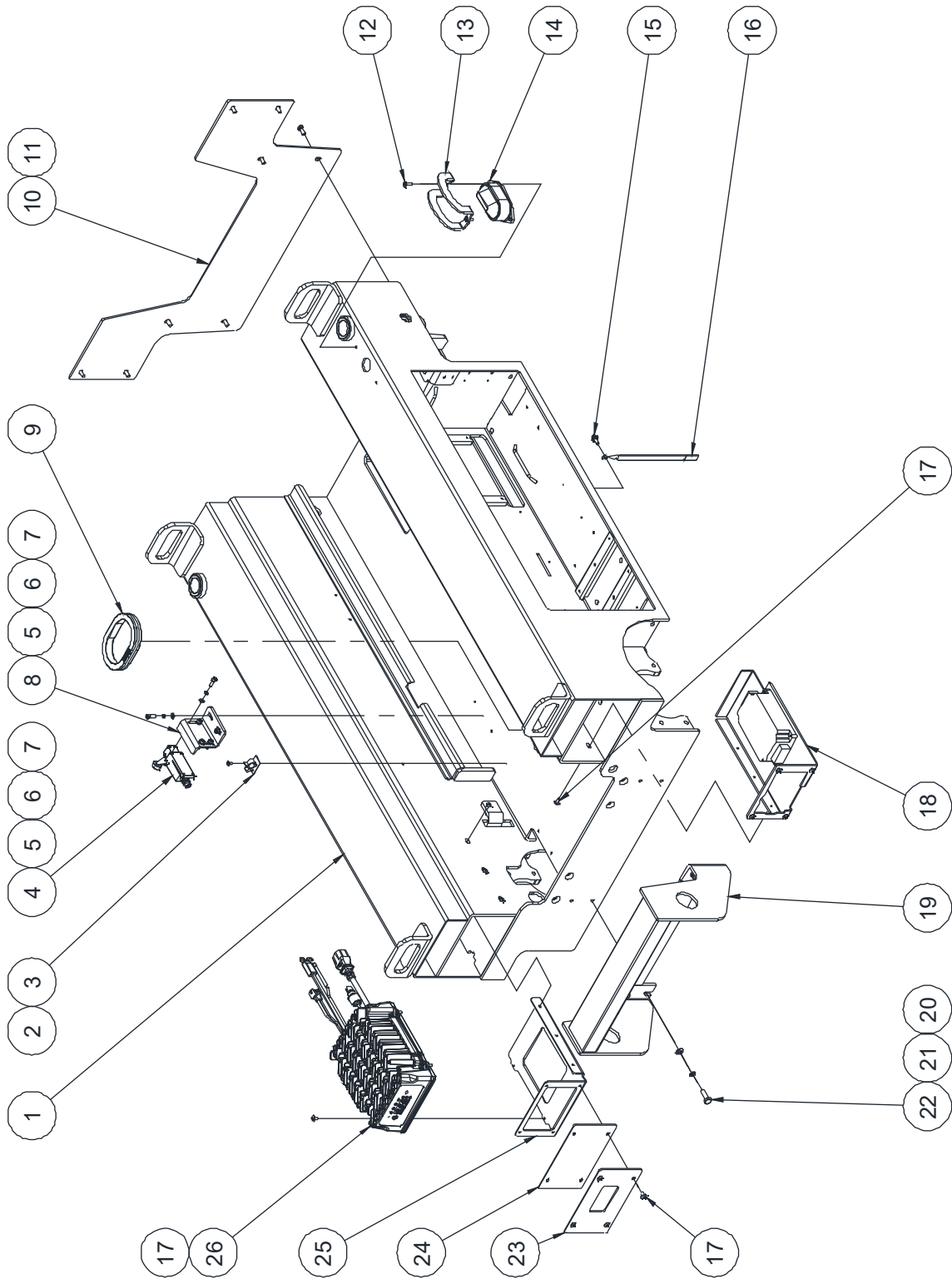
106.1 Ground Control Assembly



106.1 Ground Control Assembly

Item	Part No.	Description	Qty.
1	10019925	Ground control panel weldment	1
2	00000921	Emergency stop switch	1
3	00001243	Key switch (key removable in off position)	1
	00003356	Key switch (key removable in all position)	1
--	00003050	Key	1
4	00000738	Toggle switch	1
5	00002565	Select switch	1
6	00008262	Display	1

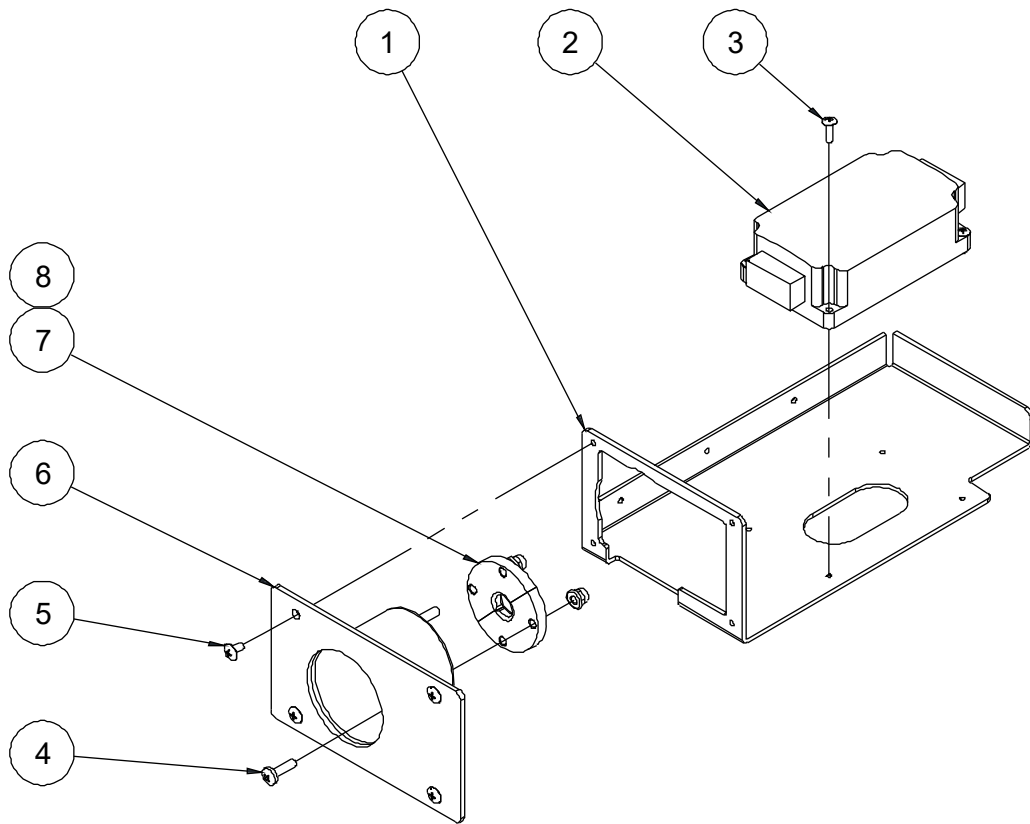
107.1 Charger and Accessories



107.1 Charger and Accessories

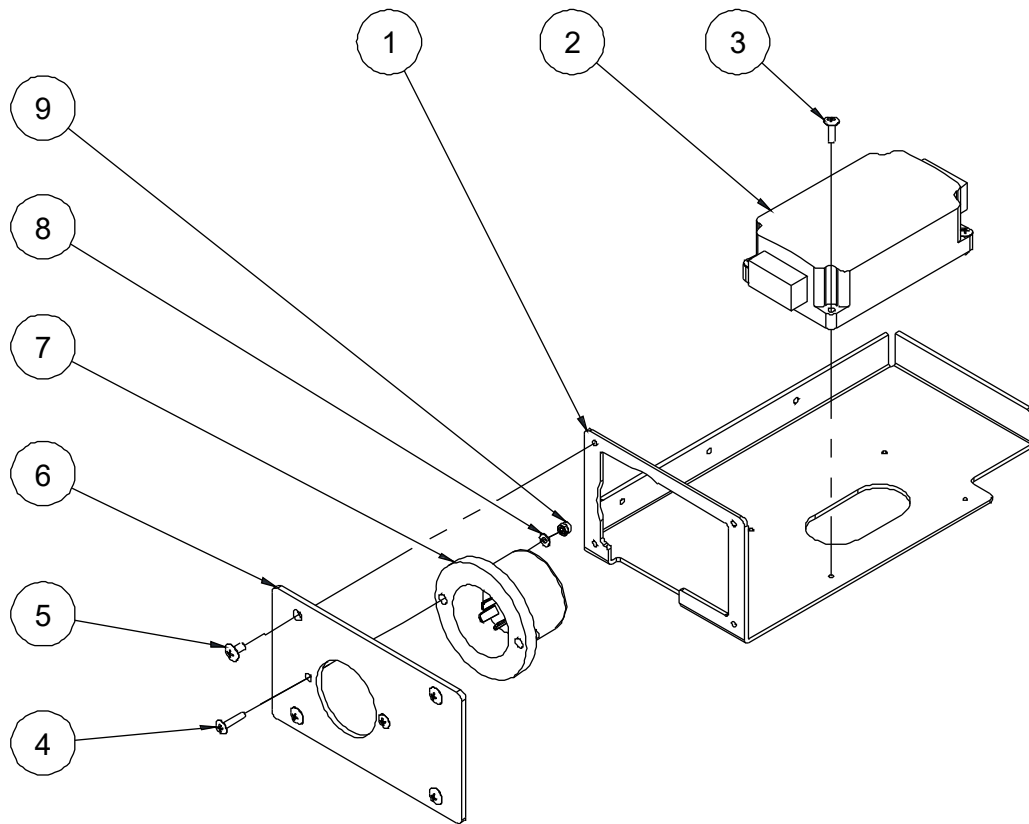
Item	Part No.	Description	Qty.
1	10025363	Frame weldment	1
2	00003950	Screw GB/T 819 M4×10 - H	1
3	00002758	Wire clip	1
4	00000748	Limit switch	1
5	00000605	Washer GB/T 97.1 5	6
6	00000606	Washer GB/T 93 5	6
7	00001246	Screw GB/T 70.1 M5×16	6
8	10022885	Switch bracket	1
9	10000039	Sheath	1
10	10022366	Cover	1
11	00001986	Screw GB/T 818 M6×16 - H	8
12	00002523	Screw GB/T 973 M5×16	2
13	10000488	Beacon cover	1
14	00000740	Beacon	1
15	00002865	Bolt QC/T 340 M6×14	1
16	10000487	Ground strap	1
17	00000999	Screw GB/T 973 M5×10	14
18		Motor controller assembly (refer to 108.1, 108.2)	1
19	10025313	Ladder (without circuit breaker bracket)	1
	10025378	Ladder (with circuit breaker bracket)	1
20	00000608	Washer GB/T 97.1 8	4
21	00000609	Washer GB/T 93 8	4
22	00000993	Bolt GB/T 5783 M8×25	4
23	10019908	Cover 1	1
24	10019909	Cover 2	1
25	10017212	Charger bracket	1
26	00010003	Charger	1

108.1 Motor Controller Assembly



108.1 Motor Controller Assembly

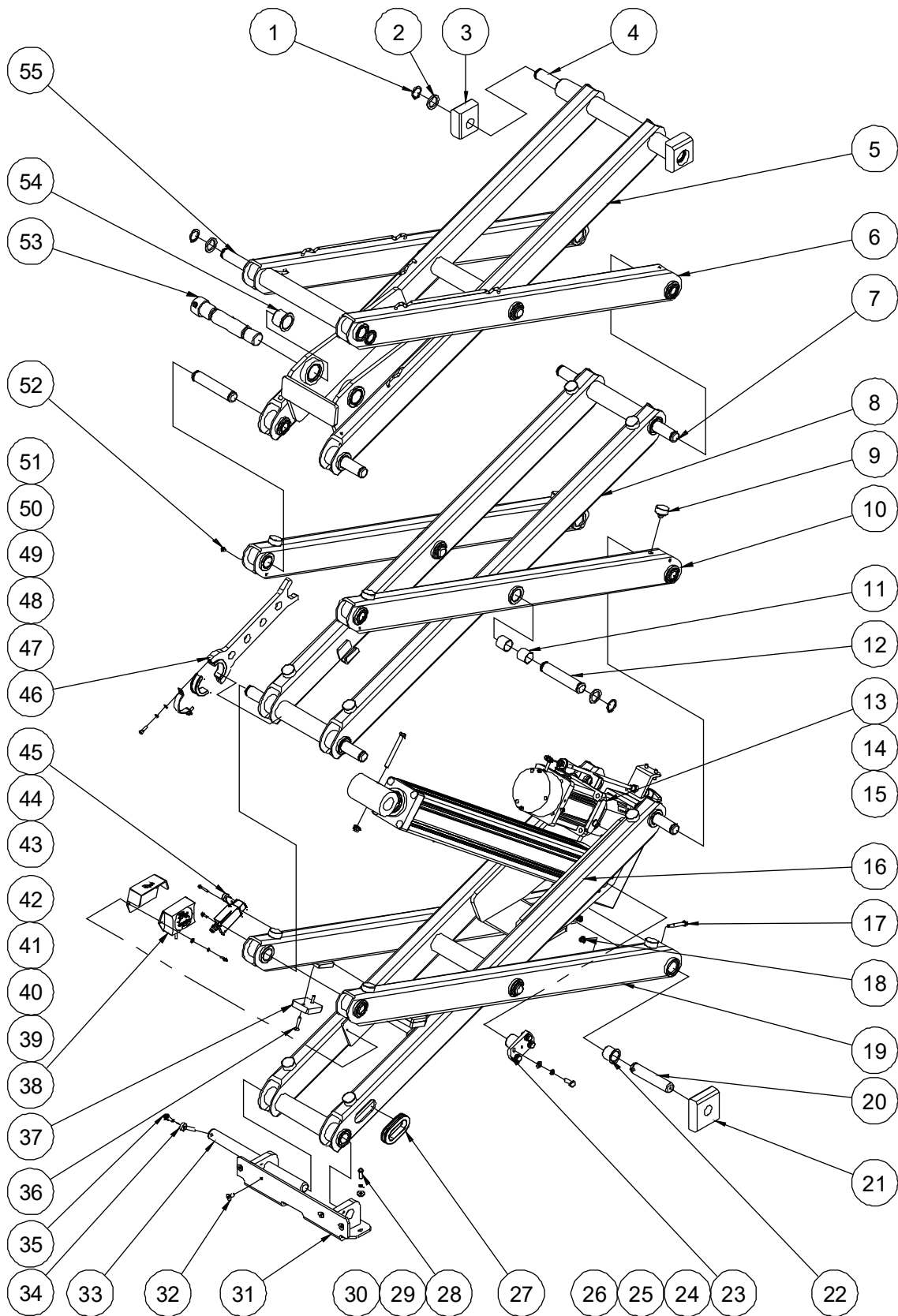
Item	Part No.	Description	Qty.
1	10020136	Controller bracket	1
2	00008342	Motor controller	1
3	00001005	Screw GB/T 973 M4×16	4
4	00001166	Screw GB/T 818 M6×20 - H	4
5	00000999	Screw GB/T 973 M5×10	4
6	10020137	Cover	1
7	10000537	Half-round batten	2
8	00002574	Nut GB/T 6183.1 M6	4

108.2 Motor Controller Assembly (Option)**108.2 Motor Controller Assembly (Option)**

Item	Part No.	Description	Qty.
1	10020136	Controller bracket	1
2	00008342	Motor controller	1
3	00001005	Screw GB/T 973 M4×16	4
4	00001006	Screw GB/T 973 M4×20	2
5	00000999	Screw GB/T 973 M5×10	7
6	10021439	Cover	1
7	00002564	Plug	1
8	00000778	Washer GB/T 97.1 4	2
9	00001236	Nut GB/T 889.1 M4	2

Section 2 Scissor

201.1 Scissor Assembly



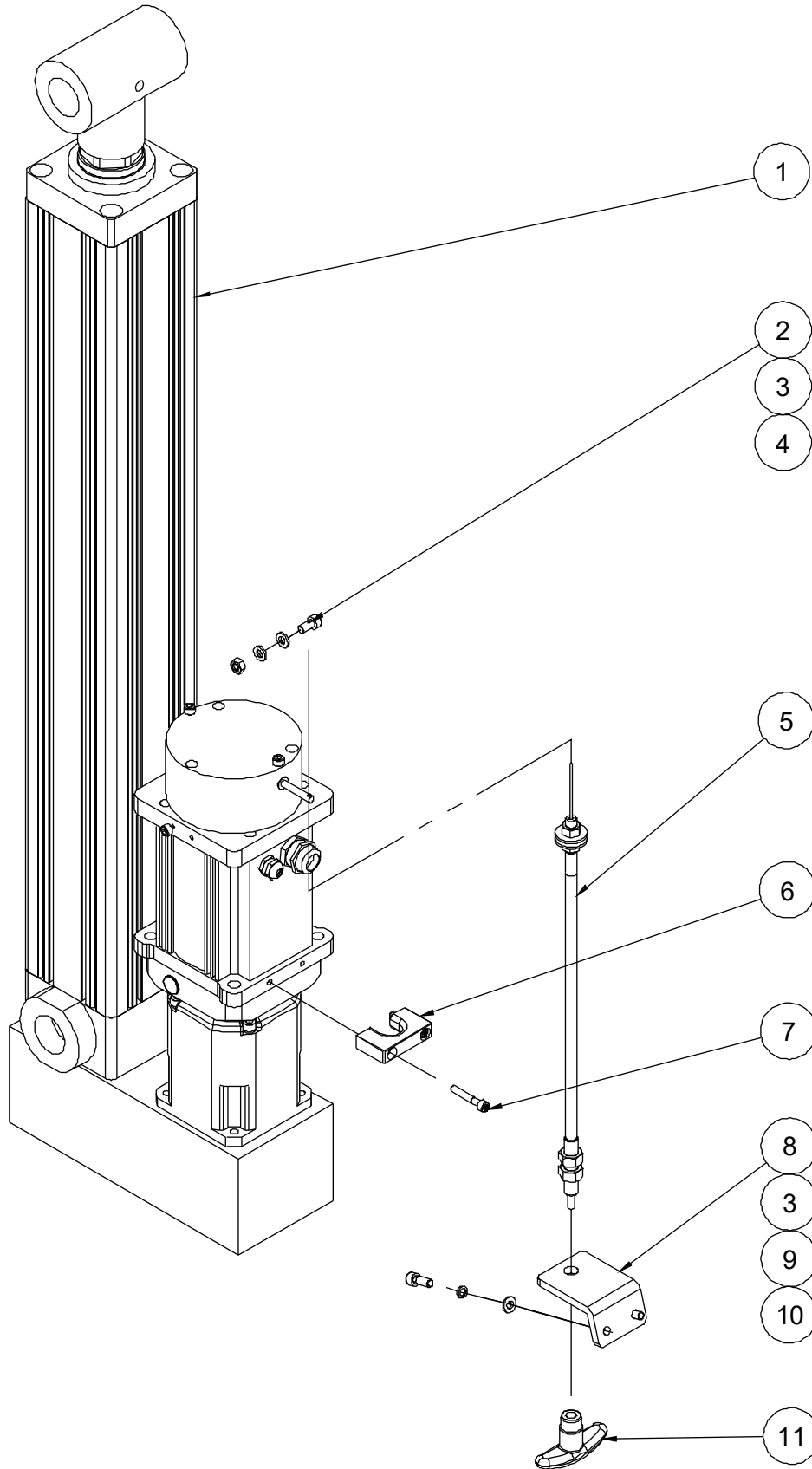
201.1 Scissor Assembly

Item	Part No.	Description	Qty.
1	00000781	Circlips JB/ZQ 4342-25	24
2	10001404	Washer	24
3	10017335	Platform slider	2
4	00008164	899-25400 Pin	1
5	10017345	Inner arm 3	1
6	10017347	Outer arm 3	1
7	00008163	899-25358 Pin	4
8	10023598	Inner arm 2	1
9	10017348	Block	16
10	10017344	Outer arm 2	2
11	00000369	8812-252825 Bearing	40
12	00008162	899-25110 Pin	6
13		Electric cylinder assembly (refer to 202.1, 202.2)	1
14	00001026	Bolt GB/T 5782 M8×80	1
15	00002575	Nut GB/T 6183.1 M8	1
16	10023597	Inner arm 1	1
17	00002569	Bolt GB/T 16674 M6×55	2
18	00002574	Nut GB/T 6183.1 M6	2
19	10017341	Outer arm 1	1
21	00008166	896B-25×14C Pin	2
20	10017054	Chassis slider	2
22	00003062	8822-25265 Bearing	16
23	10021817	Pin	2
24	00000875	Bolt GB/T 5783 M8×20	8
25	00000609	Washer GB/T 93 8	8
26	00000608	Washer GB/T 97.1 8	8
27	10022429	Sheath	2
28	00000743	Bolt GB/T 5783 M6×20	2
29	00002583	Washer GB/T 96.1 6	2

201.1 Scissor Assembly

Item	Part No.	Description	Qty.
30	00000621	Washer GB/T 93 6	2
31	10017053	Chassis link pivot weldment	1
32	00000837	Screw GB/T 70.3 M8×16	4
33	00008246	895-25290 Pin	1
34	00000217	8902-06045 Pin	1
35	00002866	Bolt QC/T 340 M6×20	1
36	00000833	Screw GB/T 70.3 M6×30	4
37	10017349	Pothole pusher	2
38	00000695	Angle sensor	1
39	10000251	Sensor cover	1
40	00002002	Screw GB/T 70.1 M4×10	2
41	00000778	Washer GB/T 97.1 4	2
42	00000779	Washer GB/T 93 4	2
43	00002228	Screw GB/T 70.1 M4×25	2
44	00001054	Screw GB/T 70.1 M4×12	2
45	00000748	Limit switch	1
46	10021650	Safety arm	1
47	10021651	Clamp	1
48	10021652	Safety arm bushing	2
49	00001246	Screw GB/T 70.1 M5×16	2
50	00000605	Washer GB/T 97.1 5	2
51	00000606	Washer GB/T 93 5	2
52	00009874	Cable ties fixing seat	3
53	10022428	Pin	1
54	00000228	8822-3230 Bearing	2
55	00008165	899-25414 Pin	1

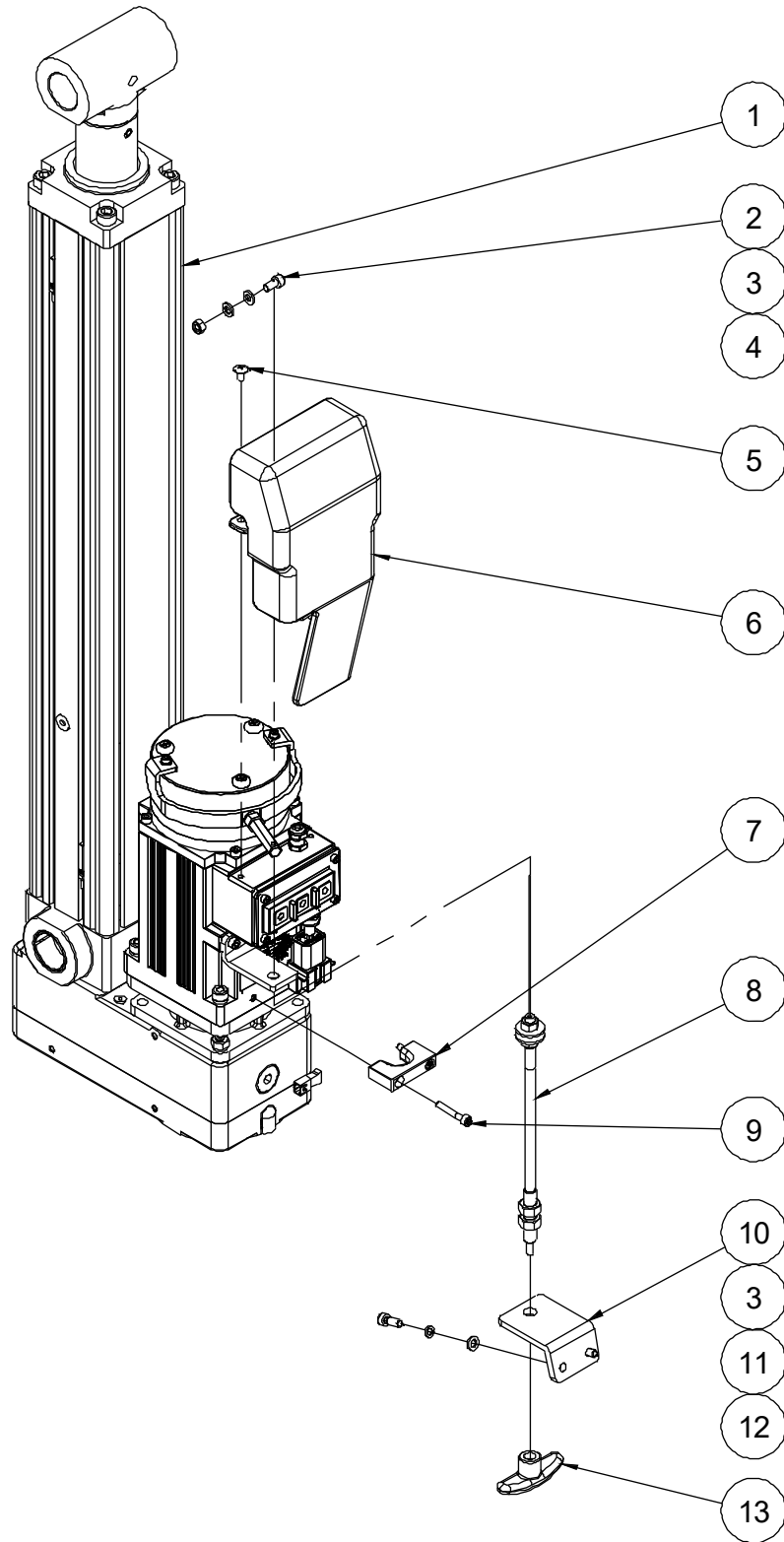
202.1 Electric Cylinder Assembly



202.1 Electric Cylinder Assembly

Item	Part No.	Description	Qty.
1	10017046	Electric cylinder unit (LT)	1
--	00008724	Electric cylinder	1
--	00008725	Reducer	1
--	00008726	Motor	1
--	00008727	Brake	1
2	10001457	Screw	1
3	00000620	Washer GB/T 97.1 6	4
4	00002247	Nut GB/T 6170 M6	1
5	10018053	Emergency down cable assembly	1
6	10017978	Clamp	1
7	00001253	Screw GB/T 70.1 M5×30	2
8	10018055	Bracket	1
9	00000876	Screw GB/T 70.1 M6×16	2
10	00000621	Washer GB/T 93 6	2
11	10000410	Lowering knob JB/T 7274.6 BM5×70	1

202.2 Electric Cylinder Assembly

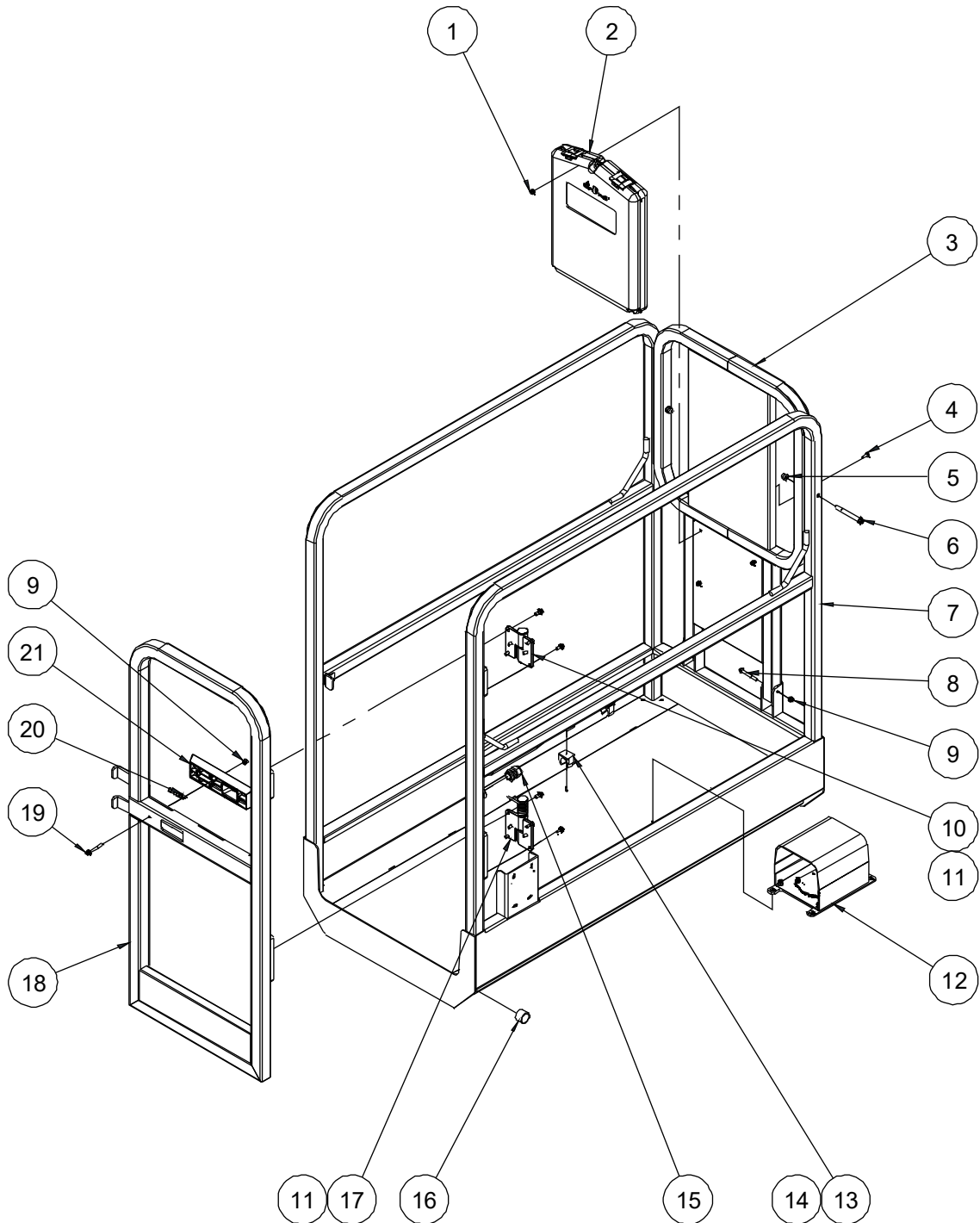


202.2 Electric Cylinder Assembly

Item	Part No.	Description	Qty.
1	10021755	Electric cylinder unit (HL without brake)	1
--	00010675	Electric cylinder	1
--	00010676	Reducer	1
--	00010677	Motor	1
1	10024297	Electric cylinder unit (HL with brake)	1
--	00010675	Electric cylinder	1
--	00010678	Reducer	1
--	00010677	Motor	1
2	10001457	Screw	1
3	00000620	Washer GB/T 97.1 6	4
4	00002247	Nut GB/T 6170 M6	1
5	00000999	Screw GB/T 973 M5×10	3
6	10023689	Motor cover	1
7	10017978	Clamp	1
8	10021758	Emergency down cable assembly	1
9	00001253	Screw GB/T 70.1 M5×30	2
10	10018055	Bracket	1
11	00000621	Washer GB/T 93 6	2
12	00000876	Screw GB/T 70.1 M6×16	2
13	10000410	Lowering knob JB/T 7274.6 BM5×70	1

Section 3 Platform

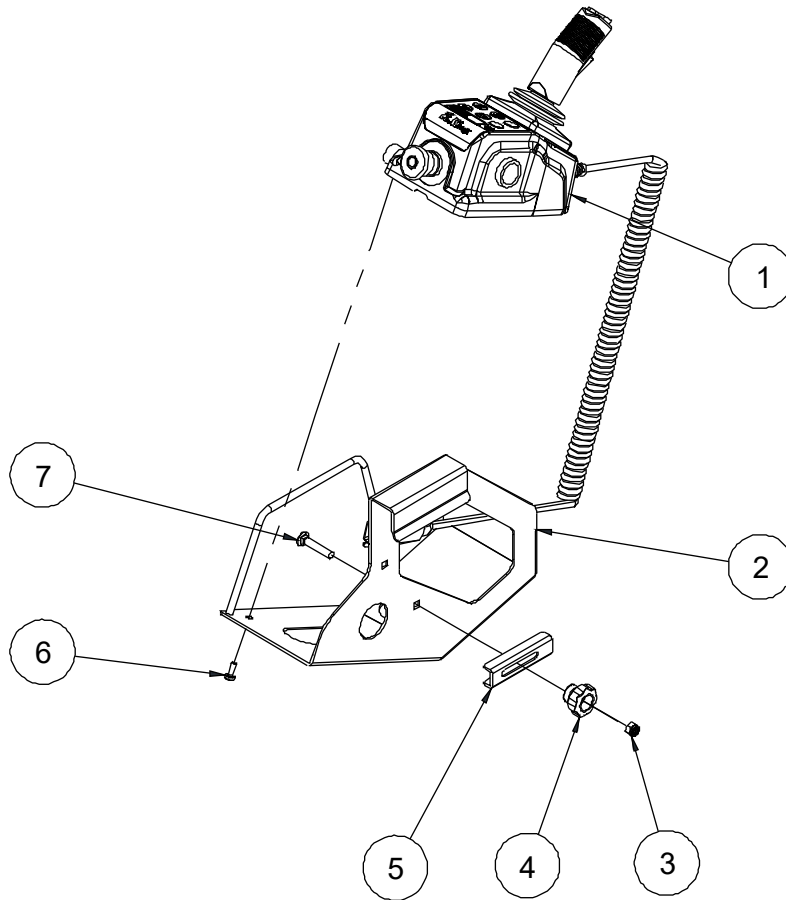
301.1 Platform Assembly



301.1 Platform Assembly

Item	Part No.	Description	Qty.
1	00002573	Nut GB/T 6183.1 M5	4
2	50000555	Manual box	1
3	10020337	Front rail	1
4	00002523	Screw GB/T 973 M5×16	4
5	00002575	Nut GB/T 6183.1 M8	2
6	00002609	Bolt GB/T 16674 M8×80	2
7	10019803	Platform weldment	1
8	00002581	Bolt GB/T 16674 M6×50	2
9	00002574	Nut GB/T 6183.1 M6	3
10	10000299	Hinge A	1
11	00002865	Bolt QC/T 340 M6×14	12
12		Footswitch assembly (Option)	1
--	00007858	Footswitch	1
--	00000831	Screw GB/T 70.3 M6×20	4
--	00000620	Washer GB/T 97.1 6	4
--	00001033	Nut GB/T 6182 M6	4
--	10022723	Plug bracket	1
--	00000999	Screw GB/T 973 M5×10	4
13	00001823	Clip 24	2
14	00004385	Screw GB/T 823 M4×8	2
15	00001828	Water-proof joint M20	1
16	00000368	8812-252820 Bearing	2
17	10000302	Hinge B	1
18	10019984	Entry gate	1
19	00002585	Bolt GB/T 16674 M6×45	1
20	10002379	Spring	1
21	10001255	Latch handle	1

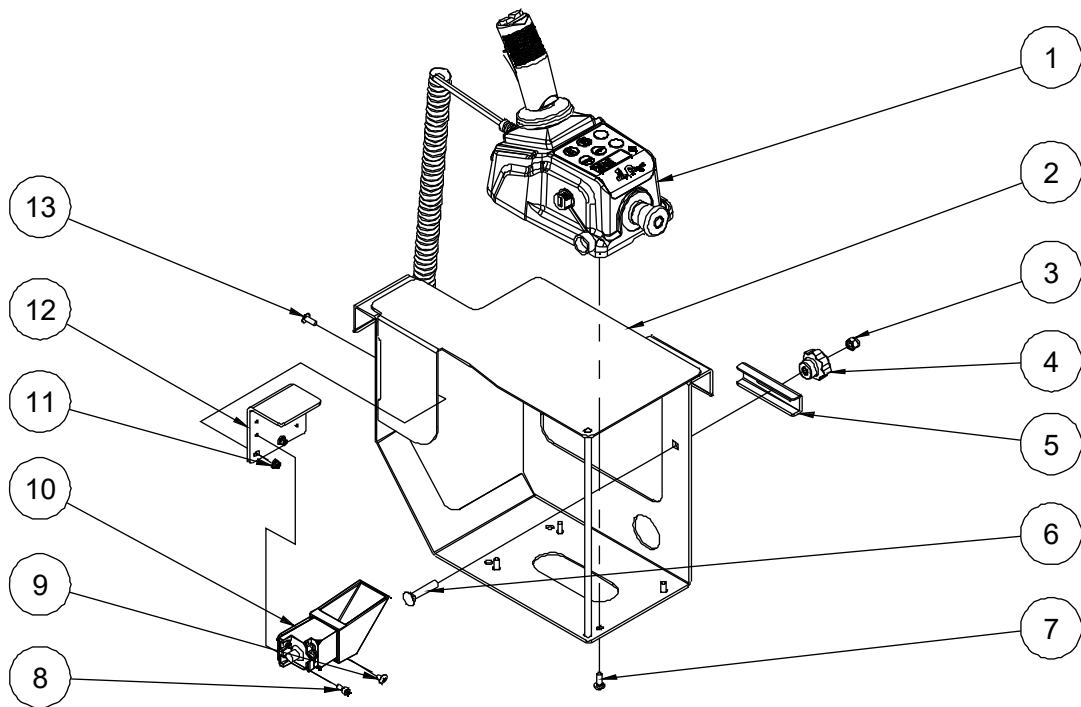
302.1 Platform Control Assembly



302.1 Platform Control Assembly

Item	Part No.	Description	Qty.
1	00010000	Platform control box assembly (refer to 303.1)	1
2	10021917	Platform control box mount bracket	1
3	00001163	Nut GB/T 6182 M8	1
4	10004827	Handle	1
5	10002023	Locating plate	1
6	00001986	Screw GB/T 818 M6×16 - H	4
7	00004384	Bolt GB/T 801 M8×45	1

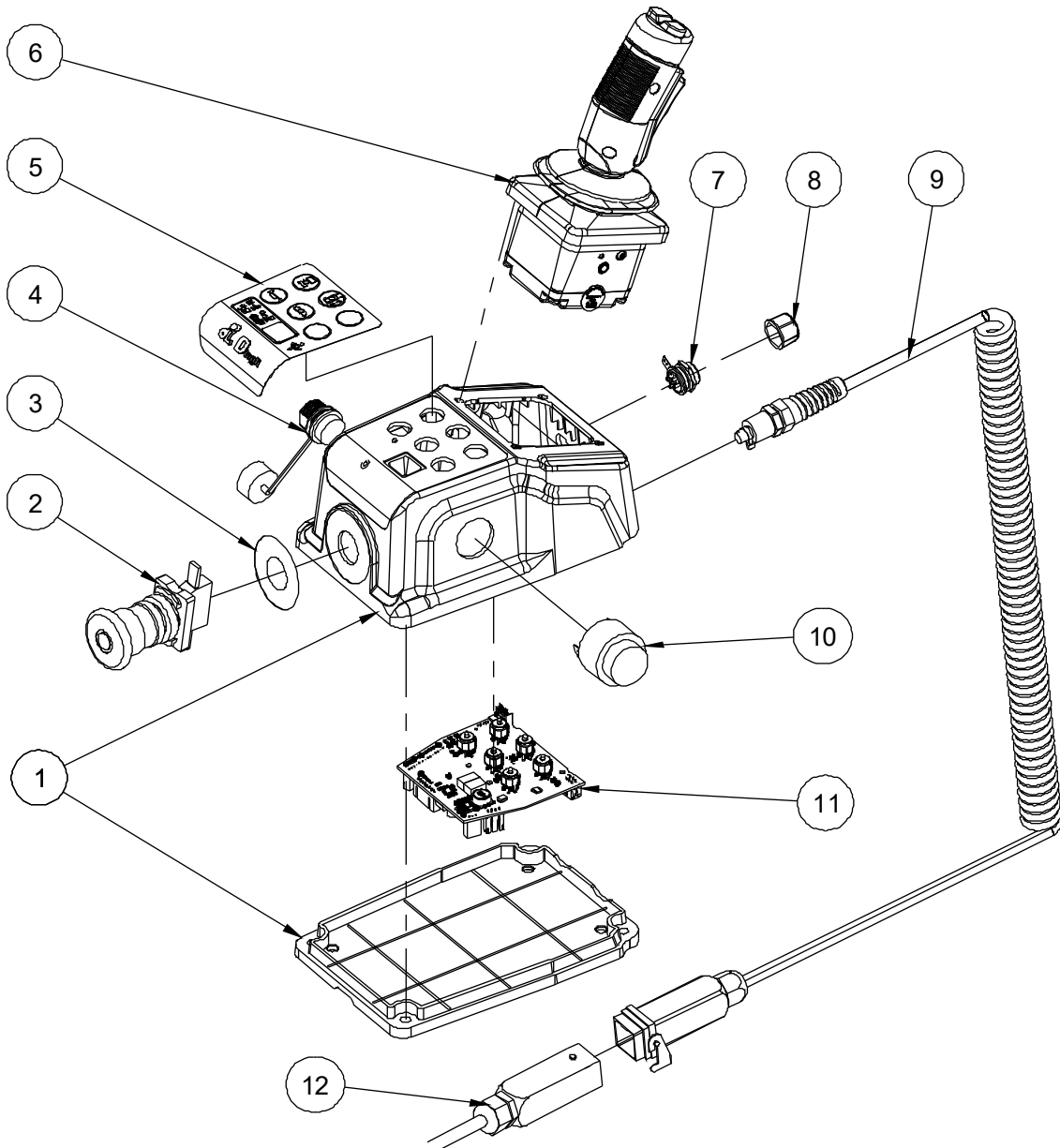
302.2 Platform Control Assembly(with cover)



302.2 Platform Control Assembly(with cover)

Item	Part No.	Description	Qty.
1	00010000	Platform control box assembly (refer to 303.1)	1
2	10001949	Platform control box mount bracket	1
3	00001163	Nut GB/T 6182 M8	1
4	10004827	Handle	1
5	10002023	Locating plate	1
6	00004384	Bolt GB/T 801 M8×45	1
7	00001986	Screw GB/T 818 M6×16 - H	4
8	00001252	Screw GB/T 70.1 M5×12 (option)	2
9	00001010	Screw GB/T 973 M5×8 (option)	1
10	00006871	Ultrasonic sensor (option)	1
11	00002573	Nut GB/T 6183.1 M5 (option)	2
12	10012853	Sensor bracket (option)	1
13	00002523	Screw GB/T 973 M5×16 (option)	2

303.1 Platform Control Box Assembly

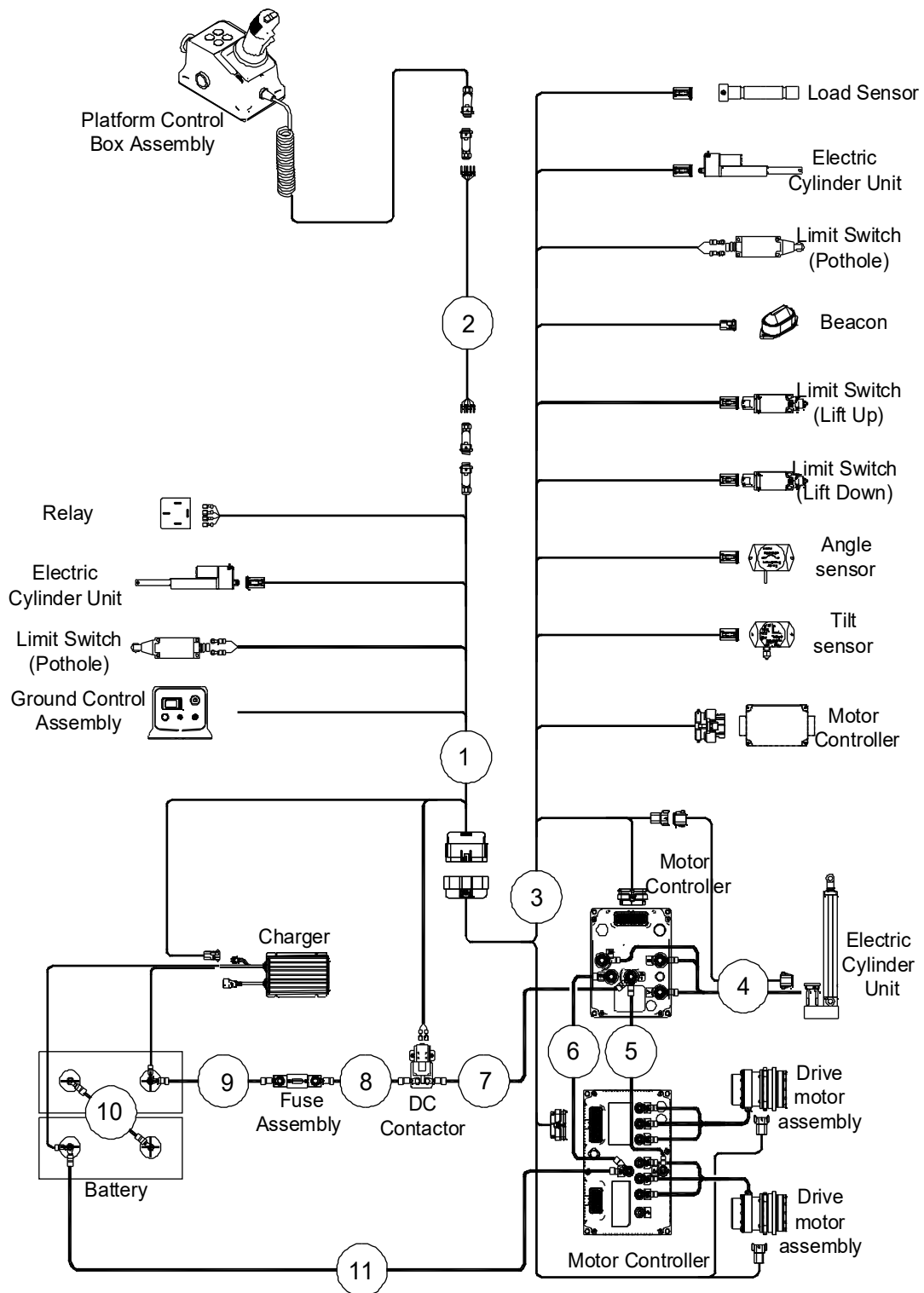


303.1 Platform Control Box Assembly

Item	Part No.	Description	Qty.
1	00008649	Shell components	1
2	00000713	Emergency stop switch	1
--	00003045	Red mushroom head	1
--	00003046	Base with 1 NC contact	1
3	00002328	Decal, Emergency stop panel	1
4	00008650	USB Cable	1
5	00008646	Decal, Platform control panel	1
6	00000711	Joystick	1
--	00003033	Function enable switch	1
--	00003034	Joystick cover	1
--	00003035	Joystick steer switch	1
--	00003036	Switch boot	1
7	00008651	Connector	1
8	00008652	Connector Cap	1
9	00008647	Coil cord	1
--	00009853	Hood	1
--	00007856	Female insert	1
--	00007857	Female contacts	5
--	00003043	Cable gland	1
10	00000712	Alarm	1
11	00008648	PCU Main board	1
12	00009615	Platform control box harness	1
--	00009854	Housing	1
--	00008174	Male insert	1
--	00008642	Male contacts	5
--	00003043	Cable gland	1

Section 4 Electrical System

401.1 Electrical Harness

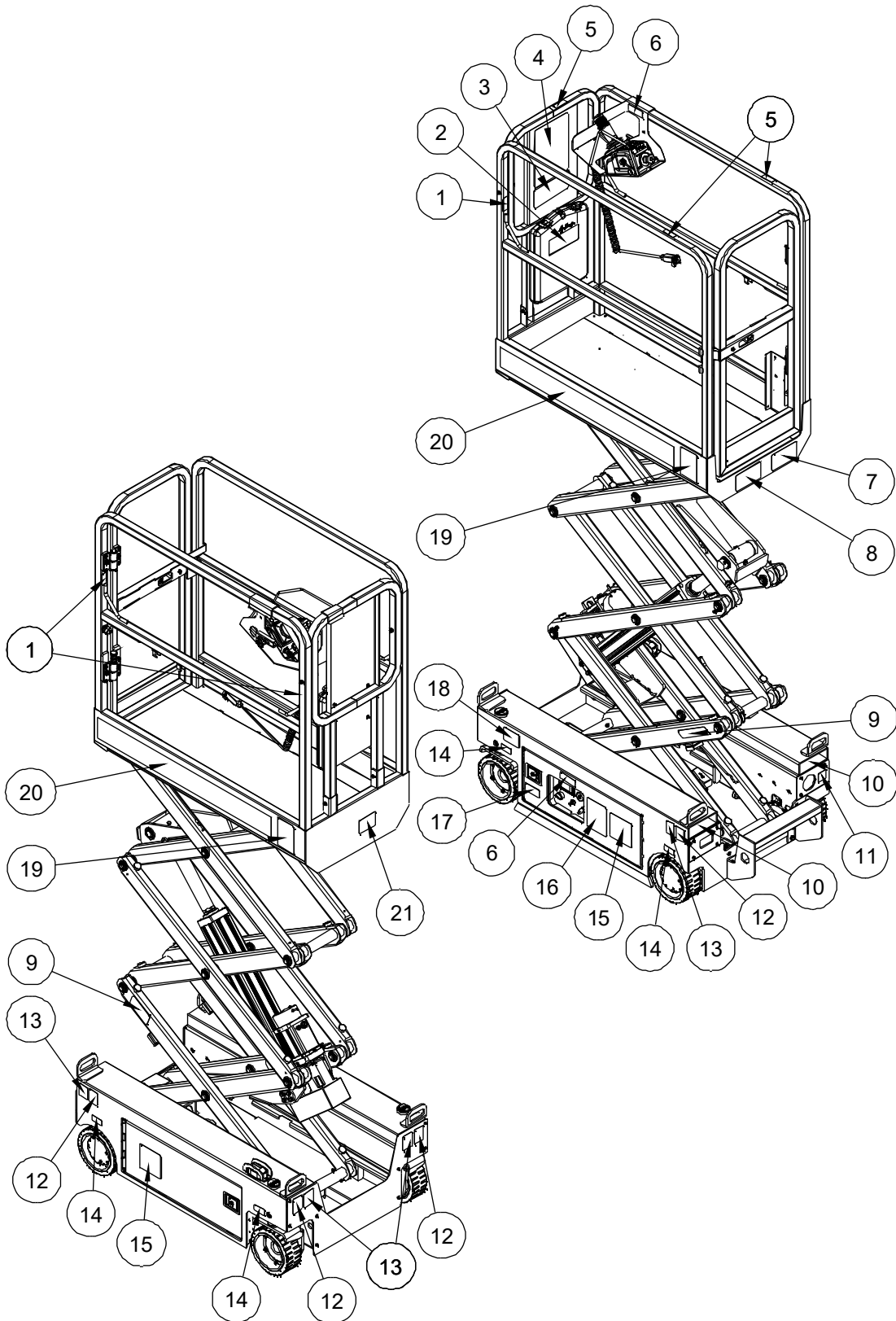


401.1 Electrical Harness

Item	Part No.	Description	Qty.
1	00008594	Chassis harness 1	1
2	00009615	Platform control box harness	1
3	00010037	Chassis harness 2	1
4	00009614	Lift motor harness (only for 10017046 electric cylinder unit)	1
5	00008599	Power harness	1
6	00008605	Power harness	1
7	00008598	Power harness	1
8	00007954	Power harness	1
9	00007950	Power harness	1
10	00008600	Power harness	1
11	00008606	Power harness	1

Section 5 Decal

501.1 Decals with Words (CE)



501.1 Decals with Words (CE)

Item	Part No.	Description	Qty.
1	09440011	Decal, Label-Lanyard anchorage point	3
2	09340001	Decal, Notice-Keep the manual with the machine	1
3	09440003	Decal, Danger-Tip-over hazard, tilt-alarm	1
4	09440001	Decal, Danger-General safety rules	1
5	09340070	Decal, Symbols-Non operating hand position	3
6	09340003	Decal, Instructions-Refer the operator to the instructions for use	2
7	09440436	Decal, Label-Capacity 230kg	1
8	09440005	Decal, Warning-Use indoors only	1
9	09430044	Decal, Instructions-Safety arm	2
10	09310001	Decal, Instructions-Forklift pockets	2
11	09310100	Decal, Symbols-Battery charging instructions	1
12	09310003	Decal, Instructions-Tie down point	4
13	09310002	Decal, Instructions-Lift point	4
14	09310058	Decal, Instructions-Maximum wheel load 330kg	4
15	09410001	Decal, Danger-Explosion/burn hazard	2
16	09410003	Decal, Warning-Inspected and operation properly	1
17	09310004	Decal, Instructions-Emergency lower	1
18	09410232	Decal, Symbols-Slope rating	1
19	09440066	Decal, Caution-Max. manual force 200N	2
20	09640214	Decal, Cosmetic-JCPT0507PA	2
21	09540001	Decal, Label-CE	1

501.1 Decals with Words (CE)

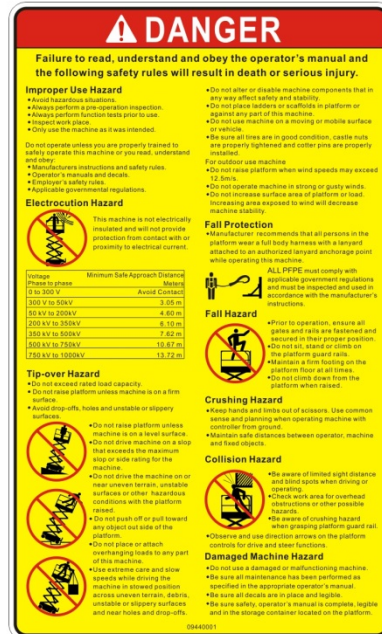
1 09440011



2 09340001



4 09440001



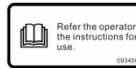
3 09440003



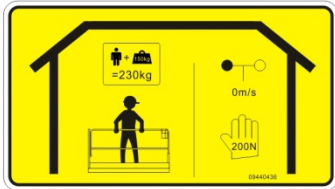
5 09340070



6 09340003



7 09440436



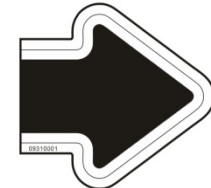
9 09430044



8 09440005



10 09310001



11 09310100



12 09310003



14 09310058



13 09310002



17 09310004



18 09410232



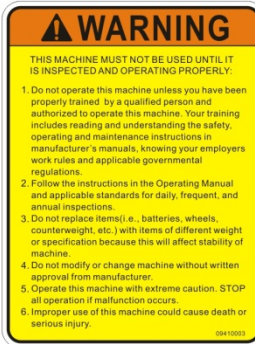
21 09540001



15 09410001



16 09410003



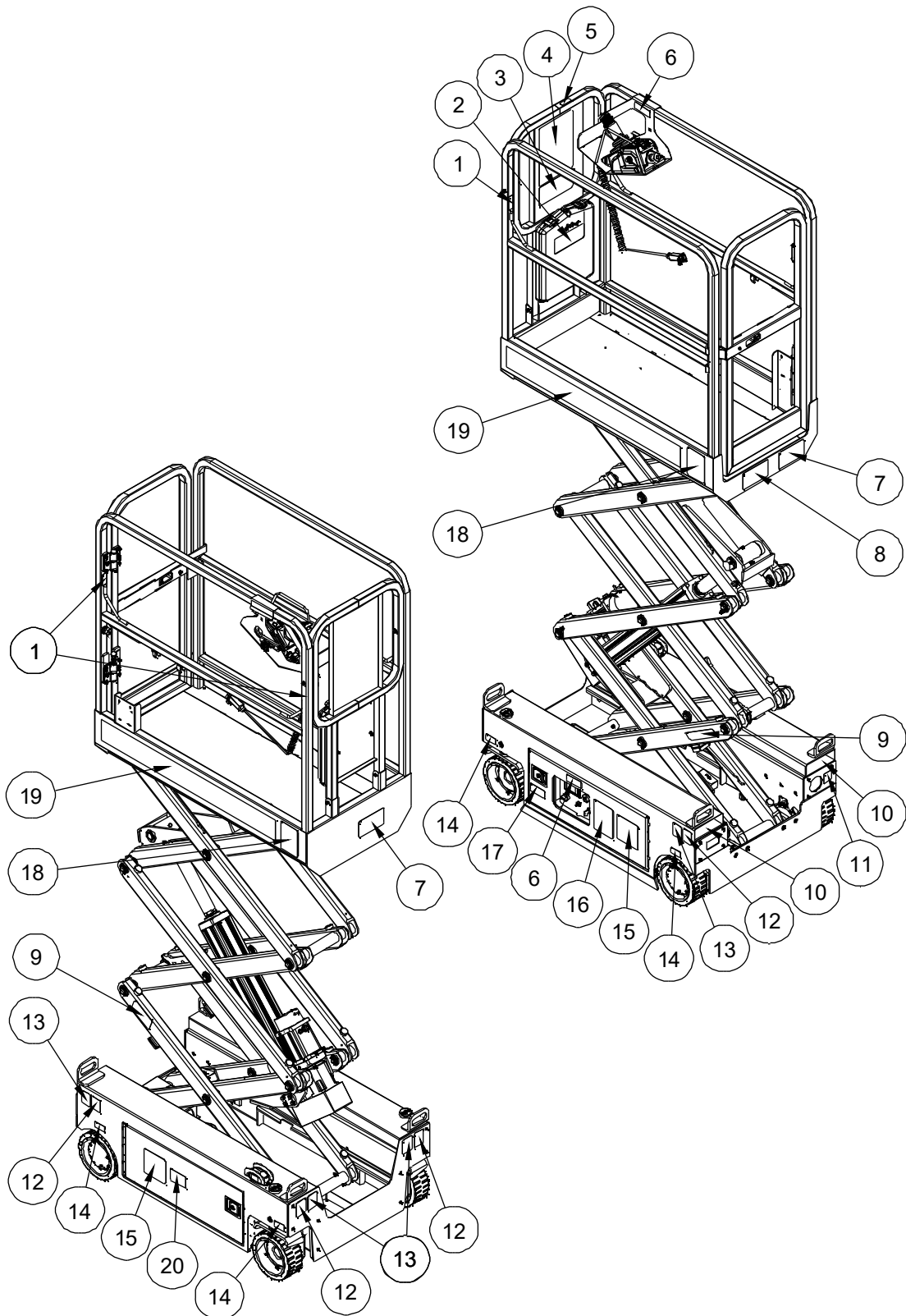
19 09440066



20 09640214

JCPT0507PA

501.2 Decals with Words (ANSI)



501.2 Decals with Words (ANSI)

Item	Part No.	Description	Qty.
1	09440011	Decal, Label-Lanyard anchorage point	3
2	09340001	Decal, Notice-Keep the manual with the machine	1
3	09440003	Decal, Danger-Tip-over hazard, tilt-alarm	1
4	09440037	Decal, Danger-General safety rules	1
5	09340005	Decal, Instructions-Platform controller normal position	1
6	09340003	Decal, Instructions-Refer the operator to the instructions for use	2
7	09440473	Decal, Label-Capacity 500 lbs 227kg	2
8	09440005	Decal, Warning-Use indoors only	1
9	09430044	Decal, Instructions-Safety arm	2
10	09310001	Decal, Instructions-Forklift pockets	2
11	09310528	Decal, Symbols-Battery charging instructions	1
12	09310003	Decal, Instructions-Tie down point	4
13	09310002	Decal, Instructions-Lift point	4
14	09310058	Decal, Instructions-Maximum wheel load 330kg	4
15	09410001	Decal, Danger-Explosion/burn hazard	2
16	09410003	Decal, Warning-Inspected and operation properly	1
17	09310004	Decal, Instructions-Emergency lower	1
18	09440303	Decal, Warning-Max. manual force 45 lbs 200N	2
19	09640214	Decal, Cosmetic-JCPT0507PA	2
20	09410208	Decal, Warning-Change battery	1

501.2 Decals with Words (ANSI)

① 09440011

② 09340001

④ 09440037

③ 09440003

⑤ 09340005

⑥ 09340003

⑦ 09440473

⑨ 09430044

⑧ 09440005

⑩ 09310001

⑫ 09310003

⑬ 09310002

⑭ 09310058

⑪ 09310528

⑮ 09410001

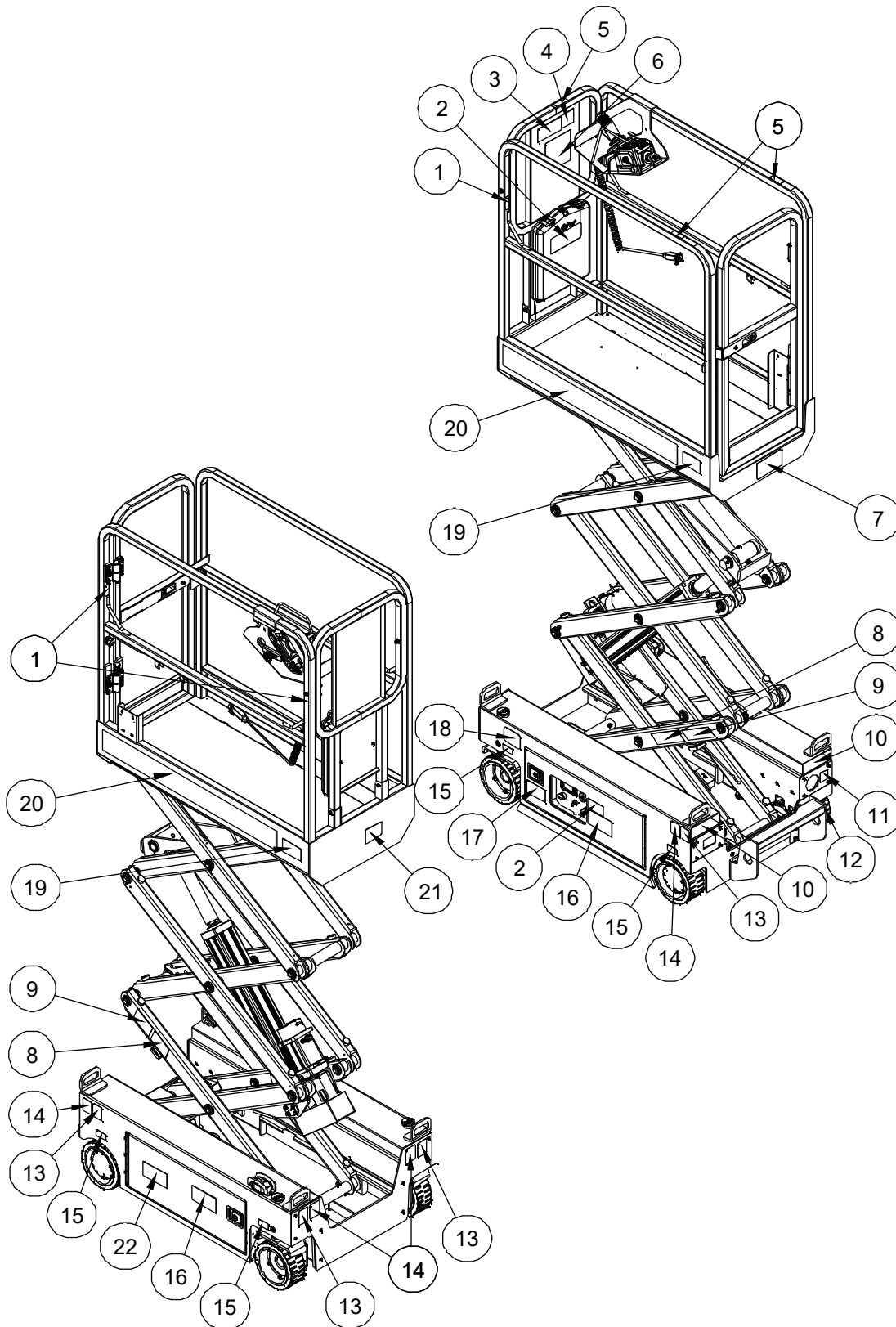
⑯ 09640214

⑰ 09310004

⑱ 09440303

⑳ 09410208

502.1 Decals with Symbols (CE)



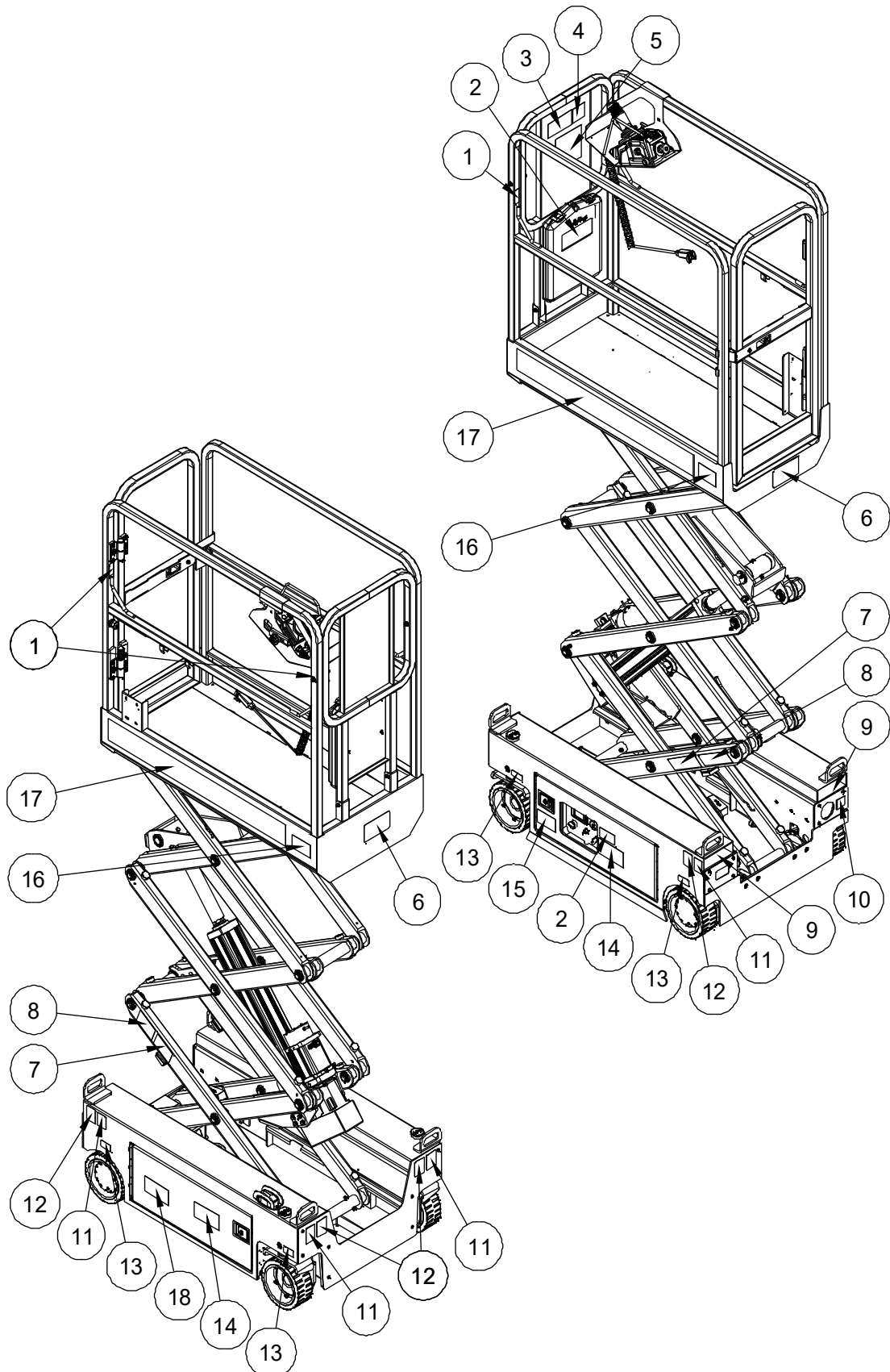
502.1 Decals with Symbols (CE)

Item	Part No.	Description	Qty.
1	09440089	Decal, Label-Lanyard anchorage point	3
2	09340026	Decal, Symbols-Refer the operator to the instructions for use	2
3	09440090	Decal, Symbols-Tip-over hazard, tilt-alarm	1
4	09340028	Decal, Instructions-Directional arrows	1
5	09340070	Decal, Symbols-Non operating hand position	3
6	09440091	Decal, Symbols-General safety rules	1
7	09440436	Decal, Label-Capacity 230kg	1
8	09430009	Decal, Symbols-Keep away from moving parts	2
9	09430008	Decal, Symbols-Safety arm	2
10	09310001	Decal, Instructions-Forklift pockets	2
11	09310100	Decal, Symbols-Battery charging instructions	1
12	09310226	Decal, Symbols-Platform power instructions	1
13	09310003	Decal, Instructions-Tie down point	4
14	09310002	Decal, Instructions-Lift point	4
15	09310058	Decal, Instructions-Maximum wheel load 330kg	4
16	09410048	Decal, Symbols-Explosion/burn hazard	2
17	09310096	Decal, Symbols-Emergency lower	1
18	09410232	Decal, Symbols-Slope rating	1
19	09440147	Decal, Symbols-Max. manual force 200N (Indoor)	2
20	09640214	Decal, Cosmetic-JCPT0507PA	2
21	09540001	Decal, Label-CE	1
22	09410049	Decal, Symbols-Electrocution hazard	1

502.1 Decals with Symbols (CE)

<p>① 09440089</p> <p>P.N. 37422</p>	<p>② 09340026</p> <p>P.N. 37421</p>	<p>⑥ 09440091</p> <p>P.N. 37440</p>
<p>④ 09340028</p> <p>P.N. 44343</p>	<p>③ 09440090</p> <p>P.N. 37411</p>	
<p>⑤ 09340070</p> <p>P.N. 67346</p>		
<p>⑦ 09440436</p> <p>09440436</p>	<p>⑩ 09310001</p> <p>09310001</p>	<p>⑪ 09310100</p> <p>230 Volt 5,5 Ampere</p>
<p>⑧ 09430009</p> <p>P.N. 37421</p>	<p>⑨ 09430008</p> <p>P.N. 37420</p>	<p>⑫ 09310226</p> <p>230 Volt</p>
<p>⑬ 09310003</p> <p>09310003</p>	<p>⑭ 09310002</p> <p>09310002</p>	
<p>⑮ 09310058</p> <p>330 kg 726 lbs</p> <p>09310058.B</p>		
<p>⑯ 09410048</p> <p>P.N. 37429</p>	<p>⑰ 09310096</p> <p>P.N. 37427</p>	<p>⑱ 09410232</p> <p>P.N. 64380</p> <p>25° (14°) 25° (14°) 25° (14°)</p>
<p>⑲ 09440147</p> <p>P.N. 87236</p>	<p>⑳ 09540001</p> <p>09540001</p>	<p>㉑ 09410049</p> <p>P.N. 37432</p>
<p>㉒ 09640214</p> <p>JCPT0507PA</p>		

502.2 Decals with Symbols (ANSI)



502.2 Decals with Symbols (ANSI)

Item	Part No.	Description	Qty.
1	09440089	Decal, Label-Lanyard anchorage point	3
2	09340026	Decal, Symbols-Refer the operator to the instructions for use	2
3	09440090	Decal, Symbols-Tip-over hazard, tilt-alarm	1
4	09340028	Decal, Instructions-Directional arrows	1
5	09440091	Decal, Symbols-General safety rules	1
6	09440473	Decal, Label-Capacity 500 lbs 227kg	2
7	09430009	Decal, Symbols-Keep away from moving parts	2
8	09430008	Decal, Symbols-Safety arm	2
9	09310001	Decal, Instructions-Forklift pockets	2
10	09310528	Decal, Symbols-Battery charging instructions	1
11	09310003	Decal, Instructions-Tie down point	4
12	09310002	Decal, Instructions-Lift point	4
13	09310058	Decal, Instructions-Maximum wheel load 330kg	4
14	09410048	Decal, Symbols-Explosion/burn hazard	2
15	09310096	Decal, Symbols-Emergency lower	1
16	09440147	Decal, Symbols-Max. manual force 200N (Indoor)	2
17	09640214	Decal, Cosmetic-JCPT0507PA	2
18	09410049	Decal, Symbols-Electrocution hazard	1

502.2 Decals with Symbols (ANSI)

<p>① 09440089</p>	<p>② 09340026</p>	<p>⑤ 09440091</p>
<p>③ 09440090</p>	<p>④ 09340028</p>	
<p>⑥ 09440473</p>	<p>⑨ 09310001</p>	<p>⑩ 09310528</p>
<p>⑦ 09430009</p>	<p>⑬ 09310058</p>	<p>⑪ 09310003</p>
<p>⑧ 09430008</p>	<p>⑭ 09410048</p>	<p>⑫ 09310002</p>
<p>⑮ 09310096</p>	<p>⑯ 09440147</p>	<p>⑰ 09410049</p>
<p>⑰ 09640214</p> <h1>JCPT0507PA</h1>		

DINGLI AWP INDIA PRIVATE LIMITED

Address: Sahney Towers, 81, First Floor, Poonamallee High Road, Nerkundram,

Chennai, Tamil Nadu - 600 107

Telephone: +91-98846 48464

E-mail: support@dinglisaarc.com

Website: www.dinglisaarc.com

DINGLI