

Our Unmatched Results **///**

World Rank in MEWP Manufacturer*

3rd Rank

Market Share*

40% +

Countries Exported*

80+

Equipments Sold in India*

600+ Units

Happy Customers*

250+

Patents*

300+

SAARC Team Size*

50+ Service Engineers

Modular Boom Series Product Manuals

 Engine  Electric  Hybrid



DINGLI AWP INDIA PVT. LTD.

Sahney Towers, 81, First Floor,
Poonamallee High Road,
Nerkundram, Chennai, Tamil Nadu - 600 107
M - 91-98846 48464
E - support@dinglisaarc.com / customerrelations@dinglisaarc.com
www.dinglisaarc.com

As the technology is constantly updated, technical parameters are subject to change without notice. This manual is for reference only
The copyright is owned by Zhejiang Dingli. No content may be copied or plagiarize for any purpose without written permission.
JANUARY 2022 edition

*Provided Data is calculated at set time

DINGLI[®]
Exceed · New Height

Scaling heights with precision & innovation.



Established in 2005, Dingli is one of the top 3 global industry leader with presence in 80 countries and regions including USA, Germany, and Japan.

The 4 factories of Dingli are built with the highest levels of automation, and focus on digital design, intelligent production & management, and collaborative eco-friendly manufacturing.

Dingli has dedicated R&D centers in the USA, Germany, and Italy, that focuses on innovation and enhanced productivity, technological innovation as the core tenet.

Dingli has independently developed more than 200 types of aerial work platforms that are widely applied in construction, commercial, and industrial fields in India and beyond.

Owning about 45% market share in India, Dingli has a dynamic team of professionals who are dedicated towards delivering excellence, and a strong network of dealers who play a vital role in ensuring that Dingli stays closer to its customer base.

Dingli's global presence focuses on delivering value backed by expertise and commitment. The transparent processes, superior quality, and 24/7 customer support has made Dingli a reliable industry leader in India.

Invested in a sustainable future, Dingli has adopted the core concepts of "carbon peak" and "carbon neutral" into its corporate governance process. This includes eco-friendly park construction, manufacturing, R&D, recycling & re-manufacturing, and green travel for employees.

In line with the trend of electrification, green energy, and intelligent innovations, Dingli has a comprehensive range of electric powered products.

Dingli will continue to deepen its R&D, production, and intelligent manufacturing process. Dingli is focused on implementing the new era of electrification of 'non-road mobile machinery' to lead a green transformation and provide long term energy saving solutions to our customers.

/// Dingli's Unique Strengths.

- Owens 300+ patents for excellence in technological inventions
- Has a current population of 600+ units to serve the customers in India
- First in the industry to complete the electrification of a full range of products
- Sole manufacturer of large load and modular electric boom lifts

/// Our Certifications

Country specific standards
Europe - CE(TUV), USA - ANSI, Australia - AS/NZ1418, Russia - CU-TR, Japan - JIS, Korea - KC

International standards
ISO 9001, ISO 14001, OHSAS18001

/// Awards & Accolades

IPAF's Annual Pioneer of Aerial Work Platforms

Access M20 Global Top 3 Manufacturers of Aerial Work Platforms

British KHL group's Top 50 Global Construction Machinery Manufacturers

/// Global Outreach

Dingli has established 10 overseas branches to facilitate a global sales network and has successfully invested in

- MAGNI**, a world renown telescopic handler enterprise in Ital
- MEC**, USA
- TEUPEN**, a global leader in spider aerial work platforms, Germany.

Boom Lifts Innovation Meets Elevation

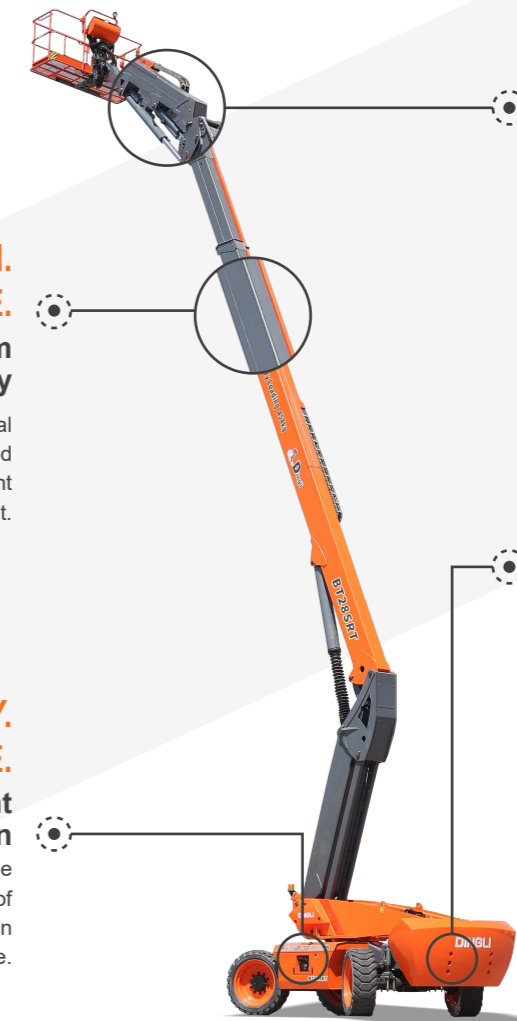
DINGLI boom lifts redefine the way one works in elevated environments. Engineered for excellence, Dingli's modular boom lifts offer accessibility and enhanced productivity with reinforced telescopic arms & multi-stage folding platforms.

As a pioneer in Aerial platforms, Dingli is focused on enriching operational efficiency and safety with cutting edge technology. Dingli holds the global patent for the overall component move down design & counterweight down design.

/// Why Dingli Boom Lifts.

- | | | | |
|--|---|--|---|
| 1
Best cost to benefit advantage | 2
Lowest cost of ownership | 3
Shortest delivery lead times | 4
Precision control & enhanced safety |
| 5
Low maintenance efforts - low downtime | 6
Unmatched patented technology | 7
Ready to use - no complex installation | 8
Intuitive replacement of parts |

/// Dingli's Boom Lift Technology



RELIABLE BY DESIGN. MINIMAL UPKEEP BY NATURE.
Special steel & boom welding technology

Our boom lifts are reinforced with Q-960, a special high strength steel that enriches the equipment load capacity. The unequal thickness and unequal height boom welding design helps minimise boom weight.

ELEVATES STABILITY. UPSCALES PERFORMANCE.
Overall component move down design

When in use, the center of gravity of the whole machine moves down to improve the stability of the equipment. All components are located on both sides of the chassis for easy maintenance.

EXTENDS REACH. UNFOLDS POSSIBILITIES.
Telescopic Jib

Our lightweight telescopic jib gives a longer horizontal outreach than the traditional jib. Equipped with hydraulic platform leveling and an internal jib telescopic cylinder, our boom lifts are safe and reliable.

REDEFINES DURABILITY. DELIVERS EXCELLENCE.
Counterweight down design

The center of gravity of the counterweight is moved down to enhance effective usage and weight distribution.

Modular Boom Series

With diesel, electric and hybrid models developed on the same platform, 85% of components in the whole series are common. Be divided into "D", "M" and "T" series, offering working height from 16 to 44 meters, all of which are suitable for standard container transport.

D-Series Modular Boom

Developed independently by Dingli, with a maximum working height of 16 to 22 meters and a maximum load of 250 kg. The whole series adopts a lightweight design and is equipped with integrated axles, with the advantages of easy maintenance, high chassis, high energy efficiency, stable control and easy transportation.

M-Series Modular Boom

Jointly developed by Dingli and MAGNI of Italy, with a maximum working height of 22 to 34 meters and a maximum load of 454 kg. The whole series features whole components downwards design and integrated axles, which have the advantages of large load capacity, strong power, easy maintenance, high chassis, high energy efficiency, stable control and easy transport.

T-Series Modular Boom

Jointly developed by Dingli and TEUPEN of Germany, with a maximum working height of 36 to 44 meters and a maximum load of 454 kg. The whole series adopts the patented design of in-situ axle expansion, the jib in its series can be hooked back, making it the only one in its class in the world applicable to standard container transport. The movement efficiency of this series is 40% higher than that in its class, and it is the industry's only boom series with fully redundant of electronic control software and hardware.



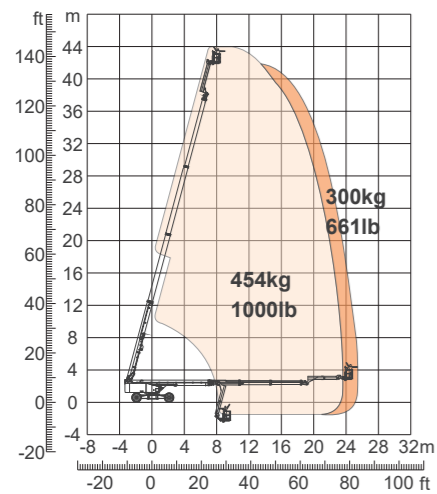
Diesel, electric and hybrid powered developed on the same platform
Over 85% of components in the whole series are common



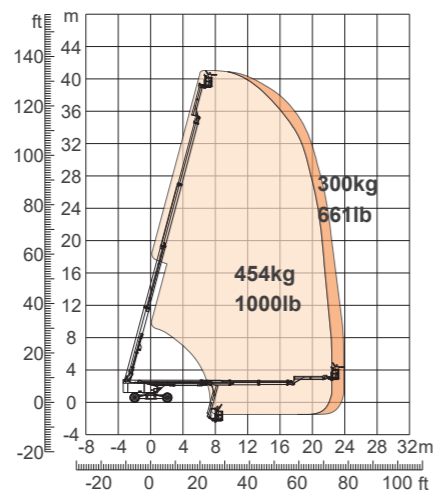
Full range of booms from 16-44m
The whole machine can be transported in a standard container



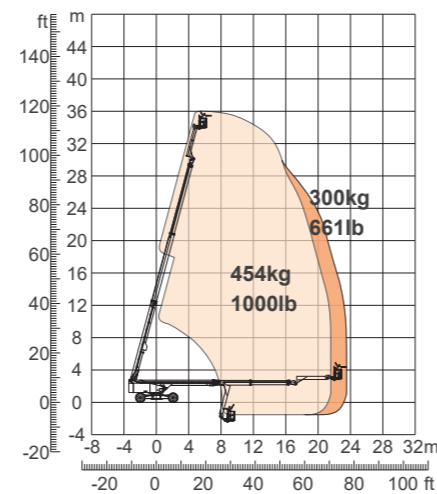
Diesel																		
BT44RT	BT41RT	BT36RT	BT34RT	BT30RT	BT28RT	BT26RT	BT24RT	BT22RT	BT20CRT	BT18CRT	BT16CRT	BA28RT	BA24RT	BA22CRT	BA20CRT	BA18CRT	BA16CRT	
			BT34BRT		BT28BRT	BT26BRT	BT24BRT	BT22BRT										
				BT30SRT	BT28SRT	BT26SRT												
Electric																		
BT44ERT	BT41ERT	BT36ERT	BT34ERT	BT30ERT	BT28ERT	BT26ERT	BT24ERT	BT22ERT	BT20CERT	BT18CERT	BT16CERT	BA28ERT	BA24ERT	BA22CERT	BA20CERT	BA18CERT	BA16CERT	BA11NE
			BT34BERT		BT28BERT	BT26BERT	BT24BERT	BT22BERT								BA18NE	BA16NE	
				BT30SERT	BT28SERT	BT26SERT												
Hybrid																		
			BT34HRT	BT30HRT	BT28HRT	BT26HRT	BT24HRT	BT22HRT	BT20CHRT	BT18CHRT	BT16CHRT	BA28HRT	BA24HRT	BA22CHRT	BA20CHRT	BA18CHRT	BA16CHRT	
BT44HRT	BT41HRT	BT36HRT	BT34BHRT	BT30SHRT	BT28BHRT	BT26BHRT	BT24BHRT											
					BT28SHRT	BT26SHRT		BT22BHRT										
Special Models																		
						BT2615ERTGS			GTBZ20SU	GTBZ18AE	GTBZ16AE							
																	BA16RR	
											GTBZ16SU							



BT44(RT/ERT/HRT)



BT41(RT/ERT/HRT)

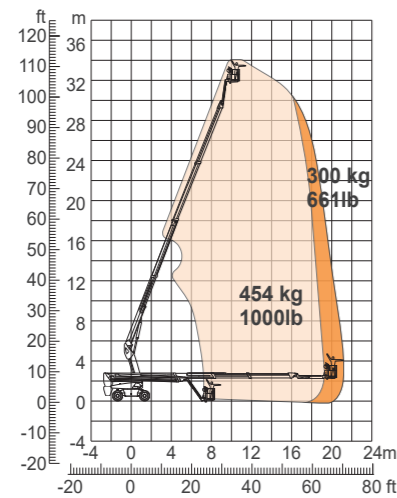


BT36(RT/ERT/HRT)

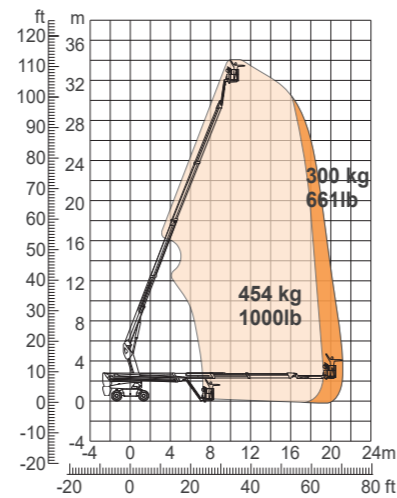
Model	BT44(RT/ERT/HRT)	BT41(RT/ERT/HRT)	BT36(RT/ERT/HRT)
Dimension			
Max. Working Height	44.44m	41.54m	36.23m
Max. Platform Height	42.44m	39.54m	34.23m
Max. Operating Range(+0.6m)	25.60m	24.10m	23.60m
Max. Platform Range	25.00m	23.50m	23.00m
Flatbed Transport Dimensions (L×W×H)	11.92m×2.44m×2.83m	11.17m×2.44m×2.83m	11.92m×2.44m×2.83m
Standard Container Transport	All Applicable		
Max. Down Probing Depth	2.00m		
Overall Width (Axle Expanded/Axle Retracted)	4.17m×2.44m		
Platform Size(L×W)	2.44m×0.91m		
Platform Height	1.10m		
Turntable Tailswing	1.39m		
Ground Clearance	0.40m		
Wheelbase(Axle Retracted/Axle Expanded)	4.27m / 4.07m		
Performance			
S.W.L(Unrestricted/Restricted)	300kg / 454kg		
Max. Occupants	3		
Gradeability	RT:45% ERT:30% HRT:30%		
Travel Speed(Stowed/Raised)	6.0km/h / 1.1km/h		
Max. Working Slope	5°		
Turret Rotation	360° Continuous		
Platform Rotation	180°		
Jib Movement	230°		
Main Boom Maximum Angle	75°		
Turning Radius(Inside/Outside)	2.99m / 5.41m		
Tyres	445/50/D710		

Weight			
Overall Weight	RT & HRT:22300kg ERT:22600kg	21060kg	19610kg

Power		
Engine RT Emergency Power System 12V/110A×2 Diesel Engine Deutz TD2.9 L4/55.4kW Diesel Tank 150L Hydraulic Tank 230L	Electric ERT Lithium Battery 358.4V/200Ah Charger 358.4V/32A Emergency Power System 12V/110A×2 Pump Motor 360V/30kW Hydraulic Tank 230L	Hybrid HRT Lithium Battery 358.4V/150Ah Charger 358.4V/32A Emergency Power System 12V/110A×2 Pump Motor 360V/30kW Range Extended Engine Kubota D1105/18.2kW Diesel Tank 100L Hydraulic Tank 230L

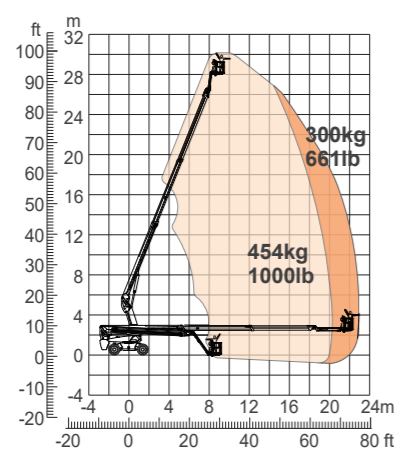


BT34(RT/ERT/HRT)

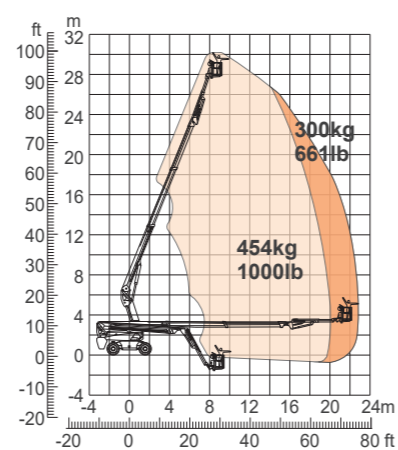


BT34B(RT/ERT/HRT)

Model	BT34(RT/ERT/HRT)	BT34B(RT/ERT/HRT)
Dimension		
Max. Working Height	34.14m	34.46m
Max. Platform Height	32.14m	32.46m
Max. Operating Range(+0.6m)	21.60m	21.85m
Max. Platform Range	21.00m	21.25m
Flatbed Transport Dimensions (L×W×H)	11.63m×2.50m×2.86m	9.01m×2.50m×2.91m
Standard Container Transport	All Applicable	
Platform Size(L×W)	2.44m×0.91m	
Turntable Tailswing	1.61m	
Ground Clearance	0.41m	
Wheelbase	2.80m	
Performance		
S.W.L(Unrestricted/Restricted)	300kg / 454kg	
Max. Occupants	3	
Gradeability	RT:45% ERT:30% HRT:30%	
Travel Speed(Stowed/Raised)	6.0km/h / 1.1km/h	
Max. Working Slope	5°	
Turret Rotation	360° Continuous	
Platform Rotation	180°	
Jib Movement	135°	
Main Boom Maximum Angle	68°	
Turning Radius(Inside/Outside)	1.87m / 3.22m	
Tyres	385/45-28	
Weight		
Overall Weight	19150kg	19290kg
Power		
Engine RT Emergency Power System 12V Diesel Engine Deutz TD2.9 L4/55.4kW Diesel Tank 135L Hydraulic Tank 165L	Electric ERT Lithium Battery 80V/520Ah Charger 80V/80A Emergency Power System 12V Driving Motor 54VAC/18kW Hydraulic Tank 165L	Hybrid HRT Lithium Battery 80V/420Ah Charger 80V/80A Emergency Power System 12V Driving Motor 54VAC/18kW Range Extended Engine Kubota Z482/9.8kW Diesel Tank 110L Hydraulic Tank 165L



BT30(RT/ERT/HRT)



BT30S(RT/ERT/HRT)

Model	BT30(RT/ERT/HRT)	BT30S(RT/ERT/HRT)
Dimension		
Max. Working Height	30.20m	30.30m
Max. Platform Height	28.20m	28.30m
Max. Operating Range(+0.6m)	23.00m	23.00m
Max. Platform Range	22.40m	22.40m
Flatbed Transport Dimensions (L×W×H)	12.08m×2.50m×2.96m	8.82m×2.50m×2.96m
Standard Container Transport	All Applicable	
Platform Size(L×W)	2.44m×0.91m	
Turntable Tailswing	1.61m	
Ground Clearance	0.41m	
Wheelbase	2.80m	
Performance		
S.W.L(Unrestricted/Restricted)	300kg / 454kg	
Max. Occupants	3	
Gradeability	RT:45% ERT:30% HRT:30%	
Travel Speed(Stowed/Raised)	6.0km/h / 1.1km/h	
Max. Working Slope	5°	
Turret Rotation	360° Continuous	
Platform Rotation	180°	
Jib Movement	135°	130°
Main Boom Maximum Angle	68°	
Turning Radius(Inside/Outside)	1.87m / 3.22m	
Tyres	385/45-28	
Weight		
Overall Weight	18900kg	18900kg
Power		
Engine RT Emergency Power System 12V Diesel Engine Deutz TD2.9 L4/55.4kW Diesel Tank 135L Hydraulic Tank 165L	Electric ERT Lithium Battery 80V/520Ah Charger 80V/80A Emergency Power System 12V Driving Motor 54VAC/18kW Hydraulic Tank 165L	Hybrid HRT Lithium Battery 80V/420Ah Charger 80V/80A Emergency Power System 12V Driving Motor 54VAC/18kW Range Extended Engine Kubota Z482/9.8kW Diesel Tank 110L Hydraulic Tank 165L



Model	BT28(RT/ERT/HRT)	BT28B(RT/ERT/HRT)	BT28S(RT/ERT/HRT)
-------	------------------	-------------------	-------------------

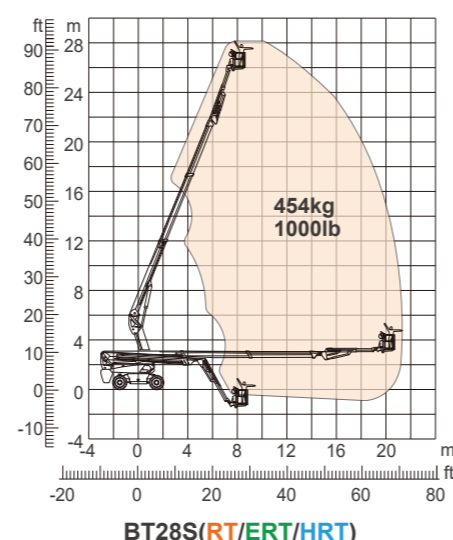
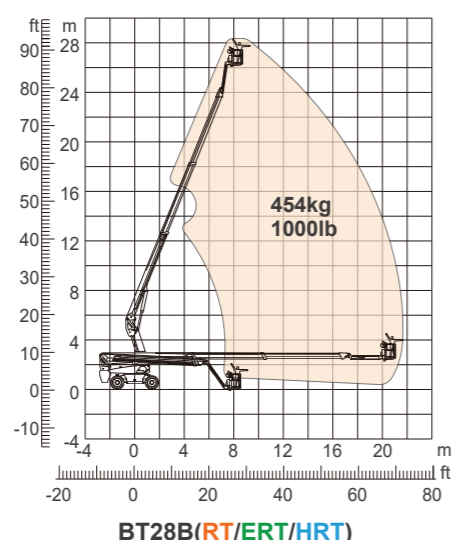
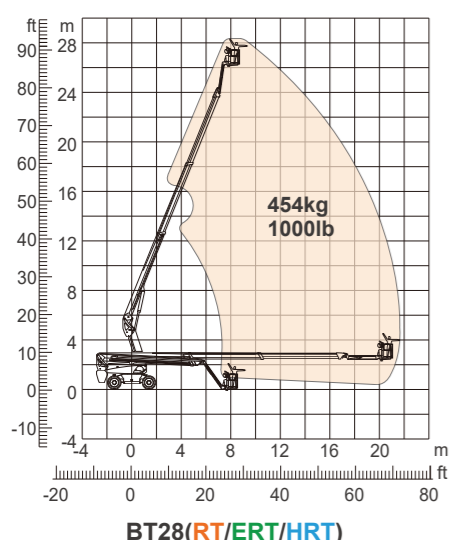
Dimension			
Max. Working Height	28.60m	28.50m	28.10m
Max. Platform Height	26.60m	26.50m	26.10m
Max. Operating Range(+0.6m)	21.90m	21.80m	21.40m
Max. Platform Range	21.30m	21.20m	20.80m
Flatbed Transport Dimensions (L×W×H)	11.5m×2.50m×2.96m	8.75m×2.50m×2.96m	8.32m×2.50m×2.96m
Standard Container Transport	All Applicable		
Platform Size(L×W)	2.44m×0.91m		
Turntable Tailswing	1.61m		
Ground Clearance	0.41m		
Wheelbase	2.80m		

Performance			
S.W.L	454kg		
Max. Occupants	3		
Gradeability	RT:45%	ERT:30%	HRT:30%
Travel Speed(Stowed/Raised)	6.0km/h / 1.1km/h		
Max. Working Slope	5°		
Turret Rotation	360° Continuous		
Platform Rotation	180°		
Jib Movement	135°	135°	130°
Main Boom Maximum Angle	68°		
Turning Radius(Inside/Outside)	1.87m / 3.22m		
Tyres	385/45-28		



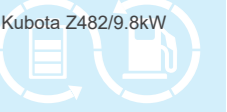
Weight			
Overall Weight	18400kg	18400kg	18500kg

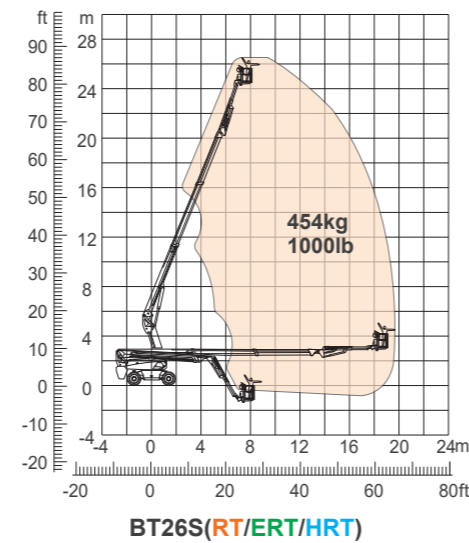
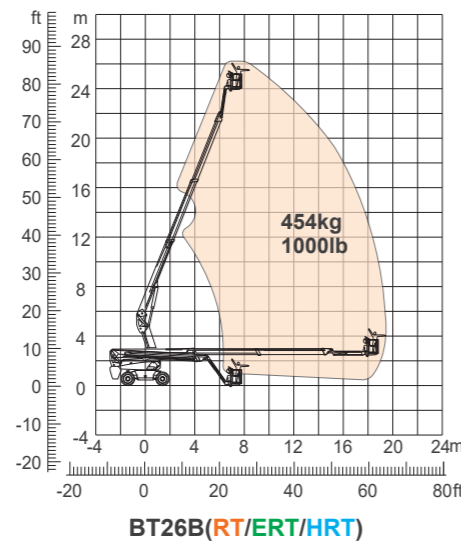
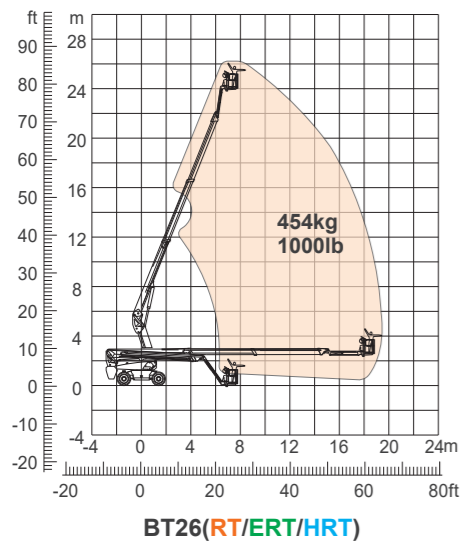
Power			
-------	--	--	--

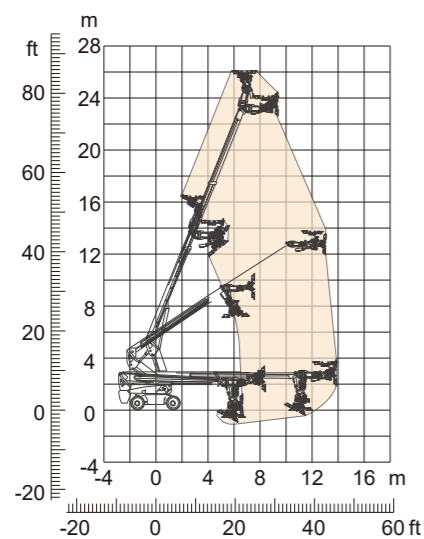
Engine RT	Electric ERT	Hybrid HRT
Emergency Power System 12V	Lithium Battery 80V/520Ah	Lithium Battery 80V/420Ah
Diesel Engine Deutz TD2.9 L4/55.4kW	Charger 80V/80A	Charger 80V/80A
Diesel Tank 135L	Emergency Power System 12V	Emergency Power System 12V
Hydraulic Tank 165L	Driving Motor 54VAC/18kW	Driving Motor 54VAC/18kW
	Hydraulic Tank 165L	Range Extended Engine Kubota Z482/9.8kW
		Diesel Tank 110L
		Hydraulic Tank 165L



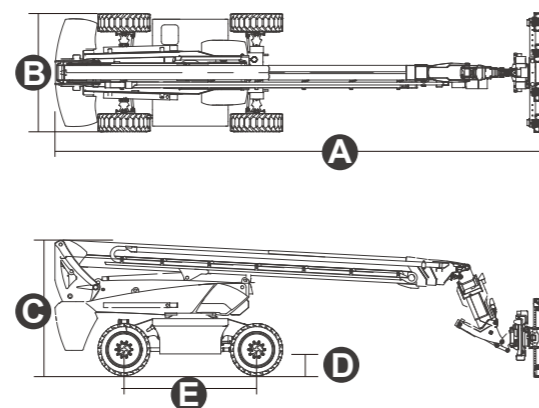


Model	BT26(RT/ERT/HRT)	BT26B(RT/ERT/HRT)	BT26S(RT/ERT/HRT)
Dimension			
Max. Working Height	26.30m	26.30m	26.70m
Max. Platform Height	24.30m	24.30m	24.70m
Max. Operating Range(+0.6m)	19.50m	19.40m	19.80m
Max. Platform Range	18.90m	18.80m	19.20m
Flatbed Transport Dimensions (L×W×H)	10.71m×2.50m×2.96m	7.95m×2.50m×2.96m	8.48m×2.50m×2.96m
Standard Container Transport	All Applicable		
Platform Size(L×W)	2.44m×0.91m		
Turntable Tailswing	1.61m		
Ground Clearance	0.41m		
Wheelbase	2.80m		
Performance			
S.W.L	454kg		
Max. Occupants	3		
Gradeability	RT:45% ERT:30% HRT:30%		
Travel Speed(Stowed/Raised)	6.0km/h / 1.1km/h		
Max. Working Slope	5°		
Turret Rotation	360° Continuous		
Platform Rotation	180°		
Jib Movement	135°	135°	130°
Main Boom Maximum Angle	68°		
Turning Radius(Inside/Outside)	1.87m / 3.22m		
Tyres	385/45-28		
Weight			
Overall Weight	16090kg	16090kg	16800kg
Power			
Engine RT Emergency Power System 12V Diesel Engine Deutz TD2.9 L4/55.4kW Diesel Tank 135L Hydraulic Tank 165L	Electric ERT Lithium Battery 80V/420Ah Charger 80V/80A Emergency Power System 12V Driving Motor 54VAC/18kW Hydraulic Tank 165L	Hybrid HRT Lithium Battery 80V/420Ah Charger 80V/80A Emergency Power System 12V Driving Motor 54VAC/18kW Range Extended Engine Kubota Z482/9.8kW Diesel Tank 110L Hydraulic Tank 165L	  





Range Of Motion



Model	BT2615ERTGS
--------------	--------------------

Dimension

Overall Length (Stowed) A	10.29m
Overall Length (Transport)	10.43m
Overall Width B	2.50m
Overall Width (Transport)	2.31m
Overall Height C	2.87m
Overall Height (Transport)	2.54m
Ground Clearance D	0.41m
Turntable Tailswing	1.61m
Wheelbase E	2.80m
Tires	385/45-28

Performance

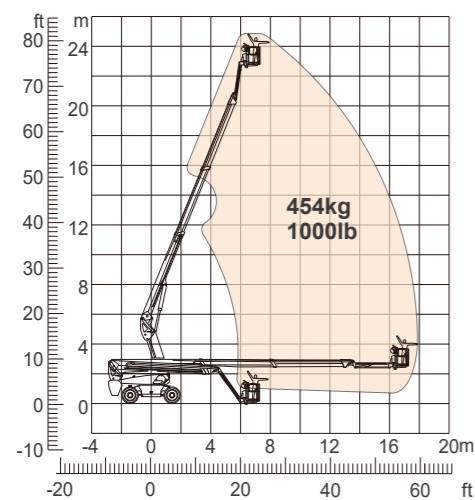
Load Capacity	800kg	1200kg	1500kg	
Max. Working Height (Glass Installed Horizontally)	26.16m	22.84m	26.16m	21.93m
Max. Working Height (Glass Installed Vertically)	23.59m	20.26m	23.59m	19.62m
Max. Horizontal Reach	13.95m	11.85m	10.85m	
Turning Radius (Inside/Outside)	1.87m/3.22m			
Turntable Rotation	360°Continuous			
Grab Mechanism Shoulder Horizontal Swing Angle Range	+/- 80°	+/- 15°		
Grab Mechanism Up&Down Pitch Luffing Angle	-90~82.5°			
Grab Mechanism Horizontal Telescopic Stroke	0.30m	0.10m		
Grab Mechanism Elbow Pitch Angle Range	-30~90°			
Grab Mechanism Horizontal Swing Angle	+/-60°			
Grab Mechanism Up& Down Vertical Translation Stroke	0.20m			
Grab Mechanism Left&Right Lateral Translation Stroke	0.20m			
Grab Mechanism Wrist Rotation Angle	360°Continuous			
Max. Working Slope	3°			
Wind Speed	12.5m/s			

Weight

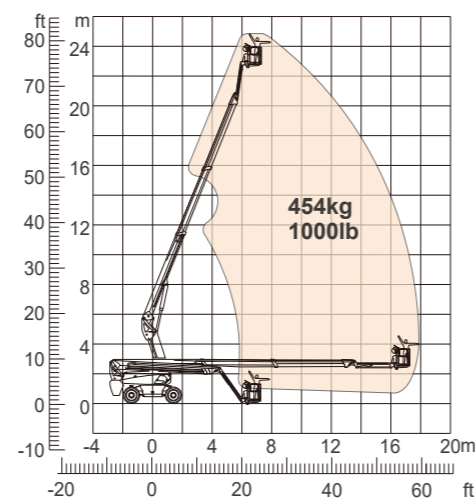
Overall Weight	19500kg
----------------	---------

Power

Travel Speed (Stowed)	≥6km/h
Travel Speed (Raised)	≥1.1km/h
Gradeability	30%
Driving Motor	XYQ-18-1H/54VAC 18KW 3243RPM
Lifting Motor	XYQD-24H/56VAC 24KW 2150RPM
Electronic Control System Voltage	12V
Hydraulic Tank	165L
Lithium Battery	TFL-520-DL1/80v
Charger	YP603-7280/90-264VAC

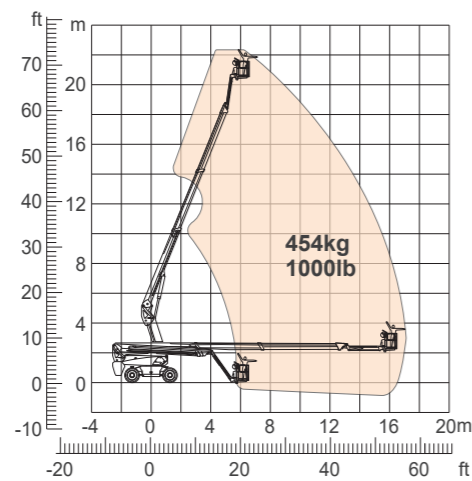


BT24(RT/ERT/HRT)



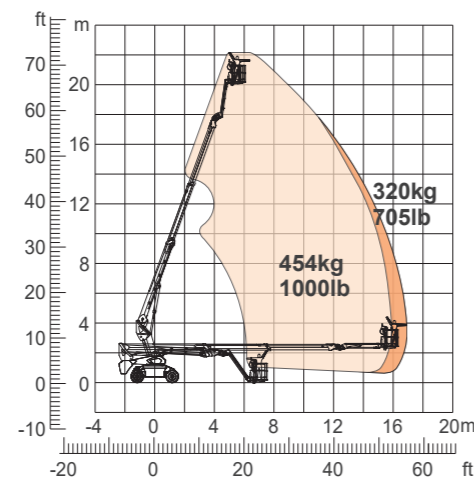
BT24B(RT/ERT/HRT)

Model	BT24(RT/ERT/HRT)	BT24B(RT/ERT/HRT)
Dimension		
Max. Working Height		24.80m
Max. Platform Height		22.80m
Max. Operating Range(+0.6m)	17.90m	17.80m
Max. Platform Range	17.30m	17.20m
Flatbed Transport Dimensions (L×W×H)	10.17m×2.50m×2.96m	7.82m×2.50m×2.96m
Standard Container Transport	All Applicable	
Platform Size(L×W)	2.44m×0.91m	
Turntable Tailswing	1.61m	
Ground Clearance	0.41m	
Wheelbase	2.80m	
Performance		
S.W.L	454kg	
Max. Occupants	3	
Gradeability	RT:45%	ERT:30% HRT:30%
Travel Speed(Stowed/Raised)	6.0km/h / 1.1km/h	
Max. Working Slope	5°	
Turret Rotation	360° Continuous	
Platform Rotation	180°	
Jib Movement	135°	
Main Boom Maximum Angle	68°	
Turning Radius(Inside/Outside)	1.87m / 3.22m	
Tyres	385/45-28	
Weight		
Overall Weight	14300kg	
Power		
Engine RT	Electric ERT	Hybrid HRT
Emergency Power System 12V	Lithium Battery 80V/420Ah	Lithium Battery 80V/420Ah
Diesel Engine Deutz TD2.9 L4/55.4kW	Charger 80V/80A	Charger 80V/80A
Diesel Tank 135L	Emergency Power System 12V	Emergency Power System 12V
Hydraulic Tank 165L	Driving Motor 54VAC/18kW	Driving Motor 54VAC/18kW
	Hydraulic Tank 165L	Range Extended Engine Kubota Z482/9.8kW
		Diesel Tank 110L
		Hydraulic Tank 165L



BT22(RT/ERT/HRT)

Model		BT22(RT/ERT/HRT)	
Dimension			
Max. Working Height	22.51m		
Max. Platform Height	20.51m		
Max. Operating Range(+0.6m)	17.28m		
Max. Platform Range	16.68m		
Flatbed Transport Dimensions (L×W×H)	9.82m×2.50m×2.70m		
Standard Container Transport	All Applicable		
Platform Size(L×W)	2.44m×0.91m		
Turntable Tailswing	1.19m		
Ground Clearance	0.28m		
Wheelbase	2.40m		
Performance			
S.W.L	454kg		
Max. Occupants	3		
Gradeability	RT:45%	ERT:30%	HRT:30%
Travel Speed(Stowed/Raised)	6.0km/h / 1.1km/h		
Max. Working Slope	5°		
Turret Rotation	360° Continuous		
Platform Rotation	180°		
Jib Movement	135°		
Turning Radius(Inside/Outside)	1.65m / 2.62m		
Tyres	315/55D20		
Weight			
Overall Weight	RT:13000kg	ERT:13200kg	HRT:13200kg
Power			
Engine RT Emergency Power System 12V Diesel Engine Deutz TD2.9 L4/36.4kW Diesel Tank 135L Hydraulic Tank 165L		Electric ERT Lithium Battery 80V/420Ah Charger 80V/80A Emergency Power System 12V Driving Motor 54VAC/18kW Hydraulic Tank 165L	
		Hybrid HRT Lithium Battery 80V/320Ah Charger 80V/80A Emergency Power System 12V Driving Motor 54VAC/18kW Range Extended Engine Kubota Z482/9.8kW Diesel Tank 30L Hydraulic Tank 165L	

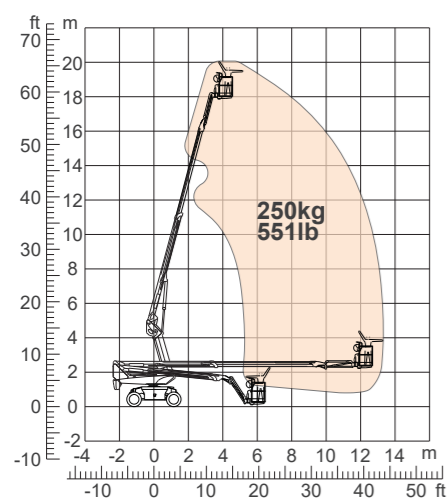


BT22B(RT/ERT/HRT)

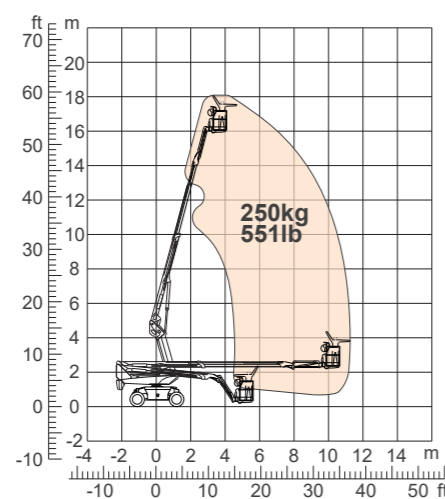
Model		BT22B(RT/ERT/HRT)	
Dimension			
Max. Working Height	22.60m		
Max. Platform Height	20.60m		
Max. Operating Range(+0.6m)	17.28m/16.21m		
Max. Platform Range	16.68m/15.61m		
Flatbed Transport Dimensions (L×W×H)	7.25m×2.50m×2.70m		
Standard Container Transport	All Applicable		
Platform Size(L×W)	2.44m×0.91m		
Turntable Tailswing	1.19m		
Ground Clearance	0.28m		
Wheelbase	2.40m		
Performance			
S.W.L.(Unrestricted/Restricted)	320kg/454kg		
Max. Occupants	3		
Gradeability	RT:45%	ERT:30%	HRT:30%
Travel Speed(Stowed/Raised)	6.0km/h / 1.1km/h		
Max. Working Slope	5°		
Turret Rotation	360° Continuous		
Platform Rotation	180°		
Jib Movement	135°		
Main Boom Maximum Angle	70°		
Turning Radius(Inside/Outside)	1.65m / 2.62m		
Tyres	315/55D20		
Weight			
Overall Weight	RT:12900kg	ERT:13300kg	HRT:13200kg
Power			
Engine RT	Electric ERT	Hybrid HRT	
Emergency Power System 12V Diesel Engine Deutz TD2.9 L4/55.4kW Diesel Tank 135L Hydraulic Tank 165L	Lithium Battery 80V/420Ah Charger 80V/80A Emergency Power System 12V Driving Motor 54VAC/18kW Hydraulic Tank 165L	Lithium Battery 80V/320Ah Charger 80V/80A Emergency Power System 12V Driving Motor 54V/18kW Range Extended Engine Kubota Z482/9.8kW Diesel Tank 110L Hydraulic Tank 165L	



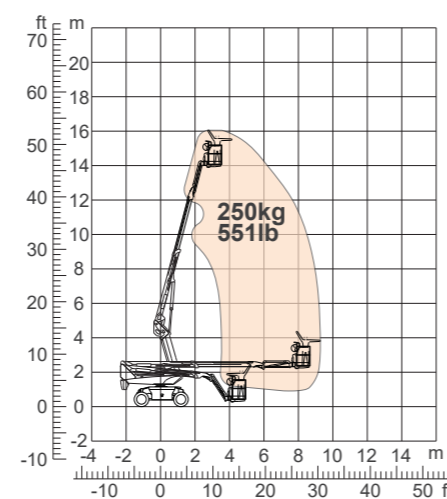
Model	BT20C(RT/ERT/HRT)2	BT18C(RT/ERT/HRT)2	BT16C(RT/ERT/HRT)2
Dimension			
Max. Working Height	20.23m	18.26m	16.33m
Max. Platform Height	18.23m	16.26m	14.33m
Max. Operating Range(+0.6m)	13.36m	11.32m	9.32m
Max. Platform Range	12.76m	10.72m	8.72m
Flatbed Transport Dimensions (L×W×H)	7.63m×2.44m×2.68m	6.48m×2.44m×2.68m	5.48m×2.44m×2.68m
Standard Container Transport	All Applicable		
Platform Size(L×W)	1.83m×0.79m		
Turntable Tailswing	1.24m	1.18m	1.18m
Ground Clearance	0.31m		
Wheelbase	2.40m		
Performance			
S.W.L	320kg		
Max. Occupants	2		
Gradeability	40%		
Travel Speed(Stowed/Raised)	6.0km/h / 1.1km/h		
Max. Working Slope	5°		
Turret Rotation	360° Continuous		
Platform Rotation	180°		
Jib Movement	132°		
Turning Radius(Inside/Outside)	3m/4.73m		
Tyres	315/55D20		



BT20C(RT/ERT/HRT)2



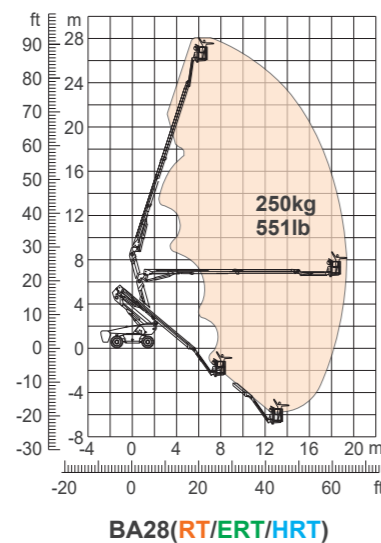
BT18C(RT/ERT/HRT)2



BT16C(RT/ERT/HRT)2

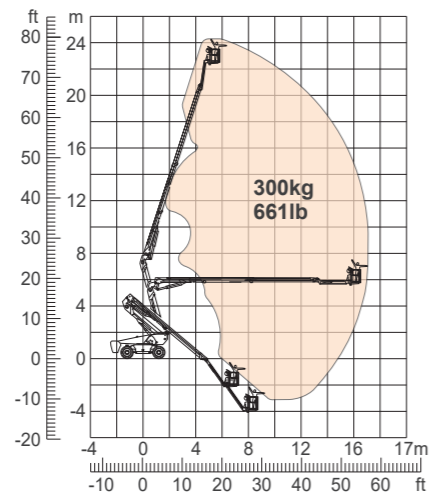
Weight			
Overall Weight	8150kg 8600kg 8600kg	7300kg 7750kg 7750kg	6700kg 7150kg 7150kg

Power		
Engine RT Emergency Power System 12V Diesel Engine Kubota D1105/18kW Diesel Tank 115L Hydraulic Tank 145L	Electric ERT Battery 48V/375Ah Charger 48VDC/60A Emergency Power System 12V Driving Motor 34AC/9kW Hydraulic Tank 145L	Hybrid HRT Battery 48V/320Ah Charger 48VDC/60A Emergency Power System 12V Driving Motor 34AC/9kW Range Extended Engine FIRMAN AN192F/7.6kW Diesel Tank 30L Hydraulic Tank 145L



BA28(RT/ERT/HRT)

Model		BA28(RT/ERT/HRT)
Dimension		
Max. Working Height		28.10m
Max. Platform Height		26.10m
Max. Operating Range(+0.6m)		19.40m
Max. Platform Range		18.80m
Max. Up And Over Clearance		9.14m
Max. Down Probing Depth		6.61m
Flatbed Transport Dimensions (L×W×H)		11.85m×2.50m×2.89m
Standard Container Transport		All Applicable
Platform Size(L×W)		2.44m×0.91m
Turntable Tailswing		1.61m
Ground Clearance		0.41m
Wheelbase		2.80m
Performance		
S.W.L		250kg
Max. Occupants		2
Gradeability	RT:45% ERT:30% HRT:30%	
Travel Speed(Stowed/Raised)		6.0km/h / 1.1km/h
Max. Working Slope		5°
Turret Rotation		360° Continuous
Platform Rotation		180°
Jib Movement		135°
Main Boom Maximum Angle		72°
Turning Radius(Inside/Outside)		1.87m/3.22m
Tyres		385/45-28
Weight		
Overall Weight	18400kg	18400kg
Power		
Engine RT Emergency Power System 12V Diesel Engine Deutz TD2.9 L4/55.4kW Diesel Tank 135L Hydraulic Tank 165L	Electric ERT Lithium Battery 80V/520Ah Charger 80V/80A Emergency Power System 12V Driving Motor 54VAC/18kW Hydraulic Tank 165L	Hybrid HRT Lithium Battery 80V/420Ah Charger 80V/80A Emergency Power System 12V Driving Motor 54VAC/18kW Range Extended Engine Kubota Z482/9.8kW Diesel Tank 110L Hydraulic Tank 165L



BA24(RT/ERT/HRT)

Model BA24(RT/ERT/HRT)

Dimension

Max. Working Height	24.30m
Max. Platform Height	22.30m
Max. Operating Range(+0.6m)	17.10m
Max. Platform Range	16.50m
Max. Up And Over Clearance	9.14m
Max. Down Probing Depth	4.03m
Flatbed Transport Dimensions (L×W×H)	9.85m×2.50m×2.89m
Standard Container Transport	All Applicable
Platform Size(L×W)	2.44m×0.91m
Turntable Tailswing	1.61m
Ground Clearance	0.41m
Wheelbase	2.80m

Performance

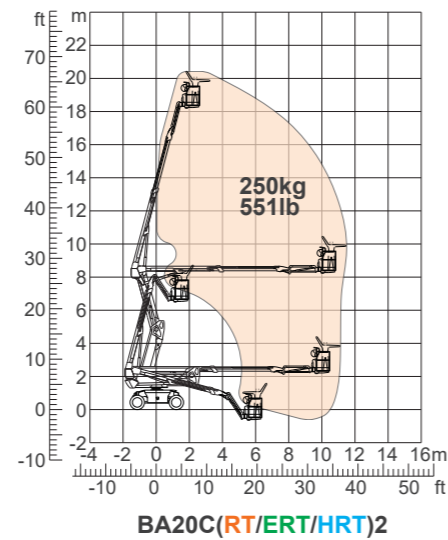
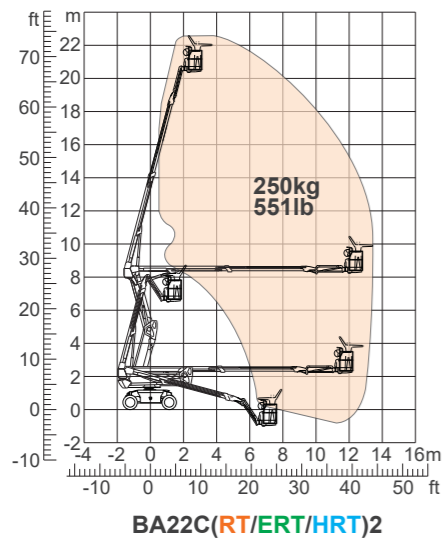
S.W.L	300kg
Max. Occupants	2
Gradeability	RT:45% ERT:30% HRT:30%
Travel Speed(Stowed/Raised)	6.0km/h / 1.1km/h
Max. Working Slope	5°
Turret Rotation	360° Continuous
Platform Rotation	180°
Jib Movement	135°
Turning Radius(Inside/Outside)	1.87m/3.22m
Tyres	385/45-28

Weight

Overall Weight	17200kg
----------------	---------

Power

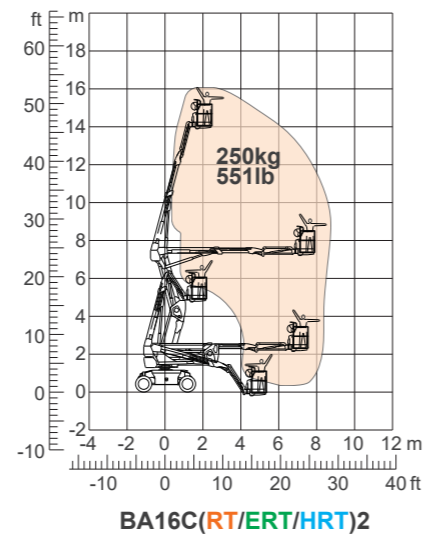
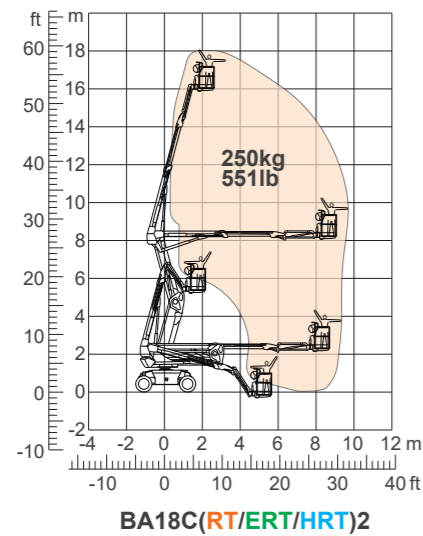
Engine RT	Electric ERT	Hybrid HRT
Emergency Power System 12V	Lithium Battery 80V/420Ah	Lithium Battery 80V/420Ah
Diesel Engine Deutz TD2.9 L4/55.4kW	Charger 80V/80A	Charger 80V/80A
Diesel Tank 135L	Emergency Power System 12V	Emergency Power System 12V
Hydraulic Tank 165L	Driving Motor 54VAC/18kW	Range Extended Engine Kubota Z482/9.8kW
	Hydraulic Tank 165L	Diesel Tank 110L
		Hydraulic Tank 165L



Model	BA22C(RT/ERT/HRT)2	BA20C(RT/ERT/HRT)2
Dimension		
Max. Working Height	22.04m	20.15m
Max. Platform Height	20.04m	18.15m
Max. Operating Range(+0.6m)	13.17m	11.13m
Max. Platform Range	12.57m	10.53m
Max. Up And Over Clearance	8.18m	8.18m
Max. Down Probing Depth	1.74m	1.25m
Flatbed Transport Dimensions (L×W×H)	7.36m×2.44m×2.59m	6.41m×2.44m×2.59m
Standard Container Transport	All Applicable	
Platform Size(L×W)	1.83m×0.79m	
Turntable Tailswing	0.70m	0.65m
Ground Clearance	0.31m	
Wheelbase	2.40m	
Performance		
S.W.L	320kg	
Max. Occupants	2	
Gradeability	35%	40%
Travel Speed(Stowed/Raised)	6.0km/h / 1.1km/h	
Max. Working Slope	5°	
Turret Rotation	360° Continuous	
Platform Rotation	180°	
Jib Movement	132°	
Turning Radius(Inside/Outside)	3m/4.73m	
Tyres	315/55D20	

Weight		
Overall Weight	9700kg 10150kg 10150kg	8450kg 8900kg 8900kg

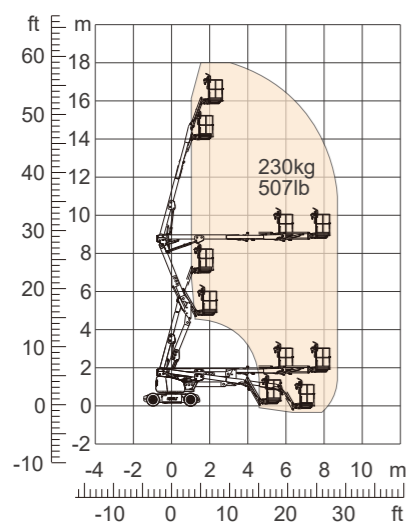
Power		
Engine RT Emergency Power System 12V Diesel Engine Kubota D1105/18.2kW Diesel Tank 115L Hydraulic Tank 145L	Electric ERT Battery 48V/375Ah Charger 48VDC/60A Emergency Power System 12V Driving Motor 34AC/9kW Hydraulic Tank 145L	Hybrid HRT Battery 48V/320Ah Charger 48VDC/60A Emergency Power System 12V Driving Motor 34AC/9kW Range Extended Engine FIRMAN AN192F/7.6kW Diesel Tank 30L Hydraulic Tank 145L



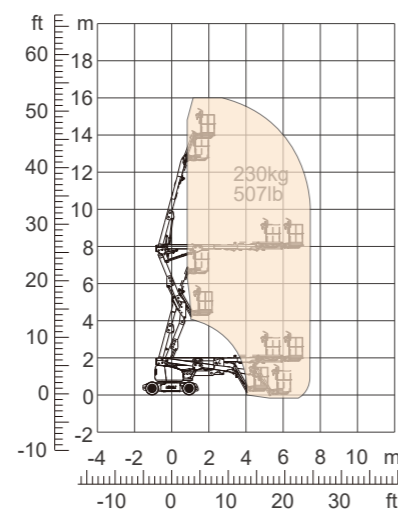
Model	BA18C(RT/ERT/HRT)2	BA16C(RT/ERT/HRT)2
Dimension		
Max. Working Height	18.11m	16.27m
Max. Platform Height	16.11m	14.27m
Max. Operating Range(+0.6m)	9.45m	8.69m
Max. Platform Range	8.85m	8.09m
Max. Up And Over Clearance	8.18m	7.30m
Max. Down Probing Depth	0.68m	0.42m
Flatbed Transport Dimensions (L×W×H)	5.47m×2.44m×2.59m	5.17m×2.44m×2.58m
Standard Container Transport	All Applicable	
Platform Size(L×W)	1.83m×0.79m	
Turntable Tailswing	0.13m	0
Ground Clearance	0.31m	
Wheelbase	2.40m	
Performance		
S.W.L	320kg	
Max. Occupants	2	
Gradeability	40%	
Travel Speed(Stowed/Raised)	6.0km/h / 1.1km/h	
Max. Working Slope	5°	
Turret Rotation	360° Continuous	
Platform Rotation	180°	
Jib Movement	132°	
Turning Radius(Inside/Outside)	3m/4.73m	
Tyres	315/55D20	

Weight		
Overall Weight	8200kg 8650kg 8650kg	7850kg 8300kg 8300kg

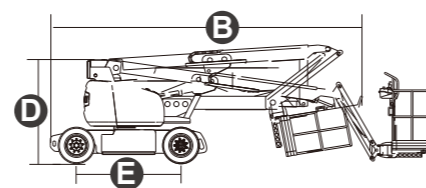
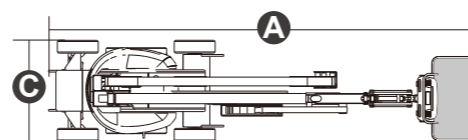
Power		
Engine RT Emergency Power System 12V Diesel Engine Kubota D1105/18.2kW Diesel Tank 115L Hydraulic Tank 145L	Electric ERT Battery 48V/375Ah Charger 48VDC/60A Emergency Power System 12V Driving Motor 34AC/9kW Hydraulic Tank 145L	Hybrid HRT Battery 48V/320Ah Charger 48VDC/60A Emergency Power System 12V Driving Motor 34AC/9kW Range Extended Engine FIRMAN AN192F/7.6kW Diesel Tank 30L Hydraulic Tank 145L



BA18NE



BA16NE



Model	BA18NE	BA16NE
Dimension		
Max. Working Height	18.00m	16.30m
Max. Platform Height	16.00m	14.30m
Max. Operating Range	8.30m	7.15m
Max. Platform Range	7.70m	6.55m
Up and Over Clearance	8.90m	7.89m
Overall Length(Stowed) A	7.21m	6.77m
Overall Length(Transport) B	6.10m	5.15m
Overall Width(Stowed) C	1.73m	1.73m
Overall Height(Stowed) D	2.00m	2.00m
Platform Size(Length×Width)	1.45m×0.76m	1.45m×0.76m
Turntable Tailswing	0	0
Ground Clearance	0.20m	0.20m
Wheelbase E	2.00m	2.00m
Turning Radius(Inside/Outside)	2.08m/3.30m	2.08m/3.30m
Tyres	17.5×6.75	17.5×6.75
Performance		
S.W.L	230kg	230kg
Max. Occupants	2	2
Gradeability	25%	30%
Travel Speed(Stowed)	6.1km/h	6.1km/h
Travel Speed(Raised)	1.1km/h	1.1km/h
Max.Working Slope	X-3°/Y-3°	X-3°/Y-3°
Turret Rotation	360 °Discontinuity	360 °Discontinuity
Platform Rotation	180°	180°
Jib Movement	130°	130°

Weight		
Overall Weight	7420kg	6700kg

Power		
Electric ERT		
Battery 48V/300Ah		
Charger 48V/35A		
Hydraulic Tank 30L		





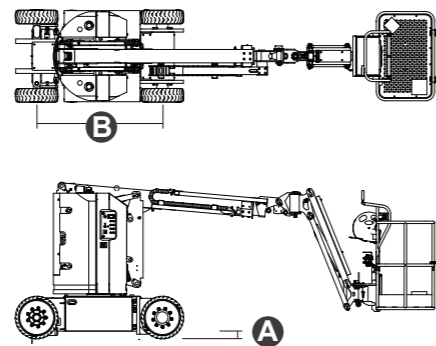
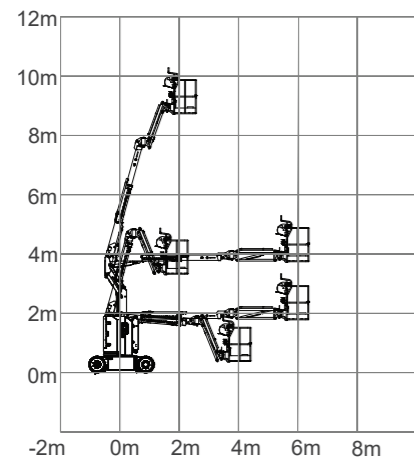
Model		BA16RR	
Mode	Road Wheels Working	Railway Wheels Working	

Size			
Max. Working Height	16.00m	16.25m	
Max. Platform Height	14.00m	14.25m	
Up And Over Height	6.44m	6.61m	
Max. Horizontal Reach	9.59m		
Overall Length(Stowed)	8.69m	8.28m	
Overall Width(Stowed)	2.5m		
Overall Height(Stowed)	2.46m	2.65m	
Jib Length	1.5m		
Platform Size(Length×Width)	2.4×0.85m		
Wheelbase	2.4m	3.38m	
Turntable Tailswing	0m	0.43m	
The Height Difference Between Railway Wheels And Road Wheels	0.38	0.21m	
Ground Clearance	0.29m	0.13m	
Tires/Railway Wheels Diameter	315/55D20	0.58m	
Max. Railway Drop Height	/	0.2m	
Turning Radius(Inside/Outside)	1.65/2.62m	40m	

Performance			
Capacity	400Kg		
Max. Gradient	40%	/	
Max. Working Slope	5°	/	
Approach Angle	22.6°	/	
Departure Angle	22.6°	/	
Turret Rotation	360° Continuous		
Platform Rotation	180°		
Jib Movement	124°		
Railway Axle Movement	0~70°		

Power	
Engine	Deutz D2.9 L4 36.4kW
Hydraulic Oil Tank	150L
Diesel Tank	135L

Weight	
Overall Weight	13120Kg

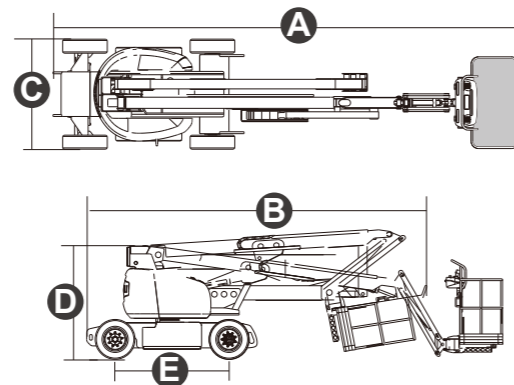
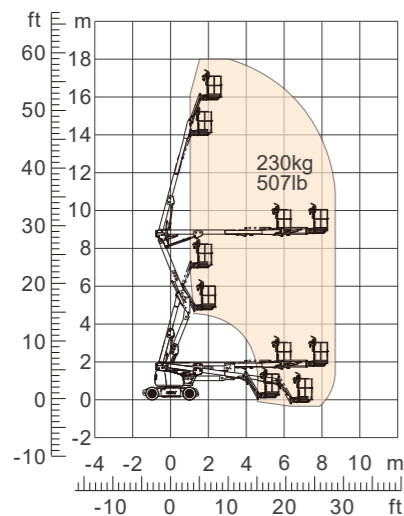


Model	BA11NE
Dimension	
Max. Working Height	10.80m
Max. Platform Height	8.80m
Max. Platform Range	6.35m
Max. Up and Over Clearance	3.80m
Overall Length	5.50m
Overall Length(Stowed)	3.90m
Overall Width	1.20m
Overall Height	2.00m
Platform Size(Length×Width)	0.76m×1.17m
Turntable Tailswing	0m
Ground Clearance A	0.09m
Wheelbase B	1.64m
Turning Radius(Inside/Outside)	1.50m/3.20m
Tyres	22X7

Performance	
S.W.L	227kg
Max. Occupants	2
Gradeability	35%
Travel Speed(Stowed)	4.8km/h
Travel Speed(Raised)	0.8km/h
Max.Working Slope	2.5°/4.5°
Turret Rotation	355°
Platform Rotation	180°
Jib Movement	139°

Weight	
Overall Weight	6660kg

Power	
Electric ERT	
Battery	48V/330Ah
Charger	48V/35A

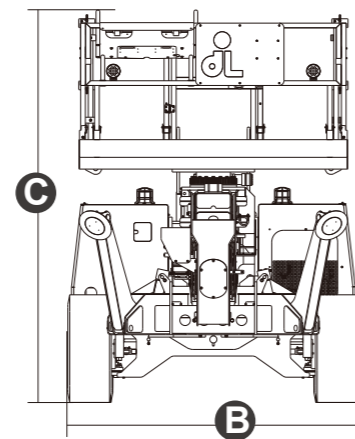
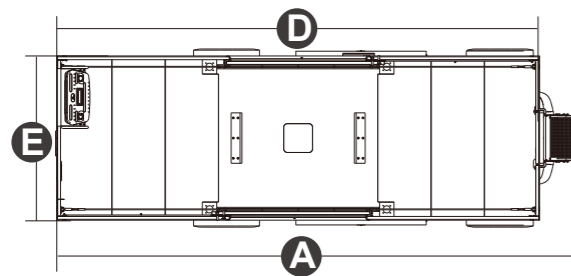


Model	GTBZ16AE	GTBZ18AE
Dimension		
Max. Working Height	16.30m	18.00m
Max. Platform Height	14.30m	16.00m
Max. Operating Range	7.15m	8.30m
Max. Platform Range	6.55m	7.70m
Up and Over Clearance	7.89m	8.90m
Overall Length(Stowed) A	6.77m	7.21m
Overall Length(Transport) B	5.15m	6.10m
Overall Width(Stowed) C	1.73m	1.73m
Overall Height(Stowed) D	2.00m	2.00m
Platform Size(Length×Width)	1.45m×0.76m	1.45m×0.76m
Turntable Tailswing	0	0
Ground Clearance	0.20m	0.20m
Wheelbase E	2.00m	2.00m
Turning Radius(Inside/Outside)	2.08m/3.30m	2.08m/3.30m
Tyres	17.5×6.75	17.5×6.75

Performance		
S.W.L	230kg	230kg
Max. Occupants	2	2
Gradeability	30%	25%
Travel Speed(Stowed)	6.1km/h	6.1km/h
Travel Speed(Raised)	1.1km/h	1.1km/h
Max.Working Slope	X-3°/Y-3°	X-3°/Y-3°
Turret Rotation	360 °Discontinuity	360 °Discontinuity
Platform Rotation	180°	180°
Jib Movement	130°	130°

Weight		
Overall Weight	6700kg	7420kg

Power		
Battery	48V/300Ah	48V/300Ah
Charger	48V/35A	48V/35A
Hydraulic Oil Tank	30L	30L



Model	GTBZ16SU	GTBZ20SU
Dimension		
Max. Working Height	15.60m	20.30m
Max. Platform Height	13.60m	18.30m
Max. Front Outreach(Outriggers Extension)	8.46m	11.70m
Max. Rear Outreach(Outriggers Extension)	4.66m	4.09m
Max. Platform Slide	1.51m	2.19m
Overall Length A	7.35m	7.68m
Overall Width(Stowed) B	2.50m	2.46m
Overall Width(Transport)	2.31m	2.30m
Overall Height(Rails Up) C	3.55m	3.80m
Overall Height(Rails Down)	2.62m	2.89m
Overall Height(Transport)	2.37m	2.59m
Platform Size(Length D ×Width E)	6.70m×2.24m	6.70m×2.24m
Ground Clearance	0.32m	0.37m
Wheelbase	3.80m	4.00m
Turning Radius(Inside/Outside)	2.45m/5.50m	3.24m/4.97m
Tyres	355-55/D625	385-65/22.5

Performance		
S.W.L	1800kg	1350kg
Max. Goods Loading	1350kg	900kg
Max. Occupants	4	4
Platform Swing Angle	+/-90°	+/-90°
Gradeability	40%	40%
Travel Speed(Stowed)	6.0km/h	6.0km/h
Travel Speed(Raised)	0.9km/h	0.9km/h
Max.Working Slope	X-3°/Y-5°	X-3°/Y-5°
Chassis Leveling	10°	10°

Weight		
Overall Weight	13350kg	18000kg

Power		
Diesel Engine	Deutz TD2.9 L4/55.4kW	Deutz TD2.9 L4/55.4kW
Hydraulic Oil Tank	216L	216L