

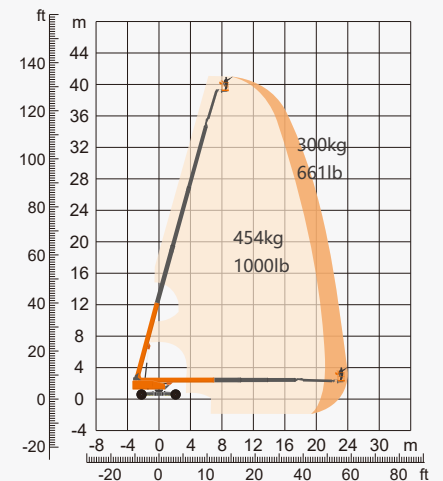
## SPECIFICATIONS

Dimension	Metric	British
Max. Working Height	41.54m	136ft 3in
Max. Platform Height	39.54m	129ft 9in
Max. Operating Range	24.10m	79ft 1in
Max. Platform Range	23.50m	77ft 1in
Max. Down Probing Depth	2.00m	6ft 7in
Flatbed Transport Dimensions (L×W×H)	11.17m×2.44m×2.83m	36ft 8in×8ft×9ft 3in
Standard Container Transport	All Applicable	All Applicable
Overall Width(Axle Expanded)	4.17m	13ft 8in
Overall Width(Axle Retracted) <b>A</b>	2.44m	8ft
Platform Size(Length×Width)	2.44m×0.91m	8ft×3ft
Platform Height	1.10m	3ft 7in
Turntable Tailswing	1.39m	4ft 7in
Ground Clearance	0.40m	1ft 4in
Wheelbase(Axle Expanded)	4.07m	13ft 4in
Wheelbase(Axle Retracted) <b>B</b>	4.27m	14ft

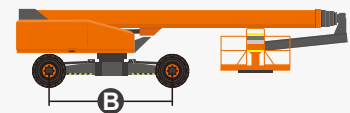
Performance	Metric	British
S.W.L(Unrestricted/Restricted)	300kg/454kg	661lb/1000lb
Max. Occupants	3	3
Gradeability	45%	45%
Travel Speed(Stowed)	6.0km/h	3.73mph
Travel Speed(Raised)	1.1km/h	0.68mph
Max. Working Slope	5°	5°
Turret Rotation	360°Continuous	360°Continuous
Platform Rotation	180°	180°
Jib Movement	230°	230°
Main Boom Maximum Angle	75°	75°
Turning Radius(Inside/Outside)	2.99m/5.41m	10ft/17ft 9in
Tyres	445/50-D710	445/50-D710

Weight	Metric	British
Overall Weight	21060kg	46429lb

Power	Metric	British
Emergency Power System	12V DC	12V DC
Diesel Engine - Deutz TD2.9 L4	Deutz TD2.9 L4/55.4kW	Deutz TD2.9 L4/55.4kW
Diesel Tank	150L	39gal
Hydraulic Tank	230L	61gal



Range Of Motion



## FEATURES

### Standard Items

- Load Sense System
- 12 V DC Auxiliary Power
- Hydraulic Oil Radiator
- Harsh Environment Kits
- Fault Diagnosis System
- Turntable Protection Lock
- High Stiffness Boom System
- Fully-Opened Chassis Cover
- AC Power Cord To Platform
- Descent & Movement Alarms
- 180° Left & Right Swing Platform
- Platform Rotation Angle Monitoring
- Platform Bottoming Out Protection
- Proportional Joystick Controls
- Loose & Broken Chain Monitoring
- Fast & Slow Speed Monitoring
- Working Condition Monitoring
- Engine Start & Stop Protection
- Rexroth Hydrostatic Drive System
- Automatic Steering Angle Matching
- Drive Forced Shunt & Merge Function
- Negative Pressure Brake With Detection
- Real-Time Machine Status Display System
- Cat.3 Safety Architecture - ISO 13849-1
- Operator Anti-Extrusion Protection System
- Deutz TD2.9 L4 55.4kW 2600rpm Diesel Engine
- 4.2m Amplitude Flexible Jib With Angle Detection
- 360° Turntable Continuous Rotation With Inspection
- Expandable Chassis With Proprietary Patented Design
- Horn
- Tilt Alarm
- Hour Meter
- Drive Enable
- Flashing Beacon
- Four-Wheel Drive
- Four-Wheel Steering
- In-Situ Axle Expansion
- Self-Levelling Platform



Telescopic  
Boom-BT



Working  
Height-41m



Jib



Diesel Engine



Rough  
Terrain-RT



Brand New One-Key In-Situ Axle Expansion Technology  
Global Patent Protection



Standard Container Transport

### DINGLI AWP INDIA PRIVATE LIMITED

Address: Sahney Towers, 81, First Floor, Poonamallee High Road, Nerkundram,  
Chennai, Tamil Nadu - 600 107  
Telephone: +91-98846 48464  
E-mail: support@dinglisaarc.com  
Website: <https://dinglisaarc.com>

