

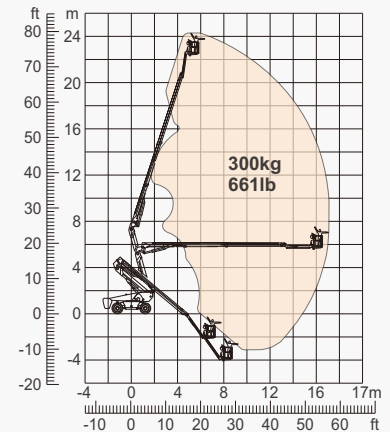
SPECIFICATIONS

| Size | Metric | British |
|--------------------------------------|-------------------|---------------------------|
| Max. Working Height | 24.82m | 81ft 5in |
| Max. Platform Height | 22.82m | 74ft 10in |
| Max. Operating Range(+0.6m) | 17.60m | 57ft 9in |
| Max. Platform Range | 17.00m | 54ft 2in |
| Flatbed Transport Dimensions (L×W×H) | 7.67m×2.50m×3.00m | 25ft 1in×8ft 2in×9ft 10in |
| Standard Container Transport | All Applicable | All Applicable |
| Platform Size(Length×Width) | 2.44m×0.91m | 8ft×3ft |
| Turntable Tailswing | 1.61m | 5ft 3in |
| Ground Clearance A | 0.41m | 1ft 4in |
| Wheelbase B | 2.80m | 9ft 2in |
| Turning Radius(Inside/Outside) | 1.87m/3.22m | 6ft 2in/10ft 7in |
| Tyres | 385/45-28 | 385/45-28 |
| Max. Up And Over Clearance | 9.14m | 30ft |
| Max. Down Probing Depth | 2.92m | 9ft 7in |

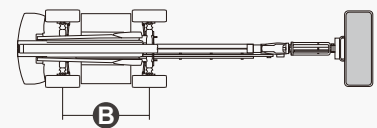
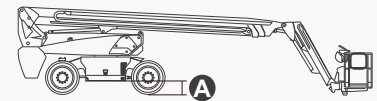
| Performance | | |
|----------------------|----------------|----------------|
| S.W.L | 300kg | 661lb |
| Max. Occupants | 2 | 2 |
| Gradeability | 30% | 30% |
| Travel Speed(Stowed) | 6.0km/h | 3.7mph |
| Travel Speed(Raised) | 1.1km/h | 0.7mph |
| Max. Working Slope | X-5°/Y-5° | X-5°/Y-5° |
| Turret Rotation | 360°Continuous | 360°Continuous |
| Platform Rotation | 180° | 180° |
| Jib Movement | 135° | 135° |

| Weight | | |
|----------------|---------|---------|
| Overall Weight | 17200kg | 37919lb |

| Power | | |
|------------------------|------------|------------|
| Lithium Battery | 420Ah/80V | 420Ah/80V |
| Emergency Power System | 12V | 12V |
| Driving Motor | 54VAC/18kW | 54VAC/18kW |
| Hydraulic Tank | 165L | 43gal |



Range Of Motion



FEATURES

Standard Items

- 2.31m (7ft 7in) Jib
- Front Oscillating Axle
- Four-Wheel Steering
- Four-Wheel Drive
- Self-Leveling Platform
- 180° Left And Right Swing Platform
- Proportional Joystick Controls
- Thumb Rocker Steer
- Drive Enable
- Ac Power Cord To Platform
- Tilt Alarm
- Descent Alarm
- Flash
- Horn
- Hour Meter
- Integral Integrated Special Drive Axle
For Construction Machinery
- 360° Continuous Turntable Rotation
- Positive Traction Four Wheel Drive
- Platform Load Sense System
- Fault Diagnosis System
- Operator Anti-crushing Protection System
- Harsh Environment Kits
- 12V DC Auxiliary Power
- Lithium Battery 420Ah/80V
- Driving Motor 18kW 3243rpm
- Lifting Motor 24kW 2150rpm



Articulated
Boom-BA



Working
Height-24m



Barb Jib-B



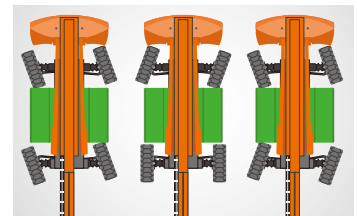
Electric-E



Rough
Terrain-RT



Anti Extrusion Device



Multiple Steering Modes



Barb Jib

DINGLI AWP INDIA PRIVATE LIMITED

Address: Sahney Towers, 81, First Floor, Poonamallee High Road, Nerkundram,
Chennai, Tamil Nadu - 600 107
Telephone: +91-98846 48464
E-mail: support@dinglisaarc.com
Website: <https://dinglisaarc.com>

