

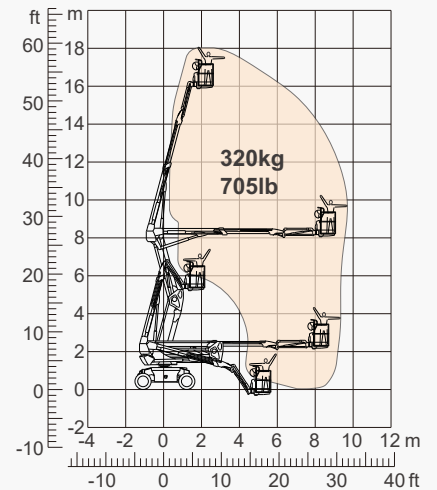
SPECIFICATIONS

| Size | Metric | British |
|--------------------------------------|-------------------|----------------------|
| Max. Working Height | 18.11m | 59ft 5in |
| Max. Platform Height | 16.11m | 52ft 10in |
| Max. Operating Range(+0.6m) | 9.45m | 31ft |
| Max. Platform Range | 8.85m | 29ft |
| Flatbed Transport Dimensions (L×W×H) | 5.47m×2.44m×2.59m | 17ft11in×8ft×8ft 6in |
| Standard Container Transport | All Applicable | All Applicable |
| Platform Size(Length×Width) | 1.83m×0.79m | 6ft×2ft 7in |
| Turntable Tailswing | 0.13m | 5in |
| Ground Clearance A | 0.31m | 1ft |
| Wheelbase B | 2.40m | 7ft 10in |
| Turning Radius(Inside/Outside) | 3m/4.73m | 9ft 10in/15ft 6in |
| Tyres | 315/55 D20 | 315/55 D20 |
| Max. Up And Over Clearance | 8.18m | 26ft 10in |
| Max. Down Probing Depth | 0.68m | 2ft 3in |

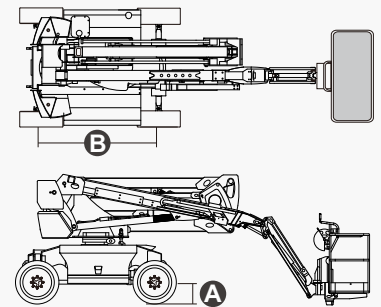
| Performance | | |
|----------------------|----------------|----------------|
| S.W.L | 320kg | 705lb |
| Max. Occupants | 2 | 2 |
| Gradeability | 40% | 40% |
| Travel Speed(Stowed) | 6.0km/h | 3.7mph |
| Travel Speed(Raised) | 1.1km/h | 0.7mph |
| Max. Working Slope | X-5°/Y-5° | X-5°/Y-5° |
| Turret Rotation | 360°Continuous | 360°Continuous |
| Platform Rotation | 180° | 180° |
| Jib Movement | 132° | 132° |

| Weight | | |
|----------------|--------|---------|
| Overall Weight | 8650kg | 19069lb |

| Power | | |
|----------------|------------|------------|
| Battery | 48V/375Ah | 48V/375Ah |
| Charger | 48VDC/60A | 48VDC/60A |
| Driving Motor | 34AC/9kW | 34AC/9kW |
| Lifting Motor | 34VAC/13kW | 34VAC/13kW |
| Hydraulic Tank | 145L | 38gal |



Range Of Motion



FEATURES

Standard Items

- 1.50m (4ft 11in) Jib
- Front Oscillating Axle
- Two-Wheel Steering
- Four-Wheel Drive
- Self-Leveling Platform
- 180° Left And Right Swing Platform
- Proportional Joystick Controls
- Thumb Rocker Steer
- Drive Enable
- Ac Power Cord To Platform
- Tilt Alarm
- Descent Alarm
- Flash
- Horn
- Hour Meter
- Integral Integrated Special Drive Axle
For Construction Machinery
- 360° Continuous Turntable Rotation
- Positive Traction Four Wheel Drive
- Platform Load Sense System
- Fault Diagnosis System
- Operator Anti-crushing Protection System
- Harsh Environment Kits
- 12V DC Auxiliary Power
- Battery 375Ah/48V
- Driving Motor 9kW 4834rpm
- Lifting Motor 13kW 1855rpm



Articulated
Boom-BA



Working
Height-18m



Jib



Electric-E



Rough
Terrain-RT



DINGLI AWP INDIA PRIVATE LIMITED

Address: Sahney Towers, 81, First Floor, Poonamallee High Road, Nerkundram,
Chennai, Tamil Nadu - 600 107
Telephone: +91-98846 48464
E-mail: support@dinglisaarc.com
Website: <https://dinglisaarc.com>

